



Merino Gardens, E1W

£3,900 Per week

 2  1  2  B

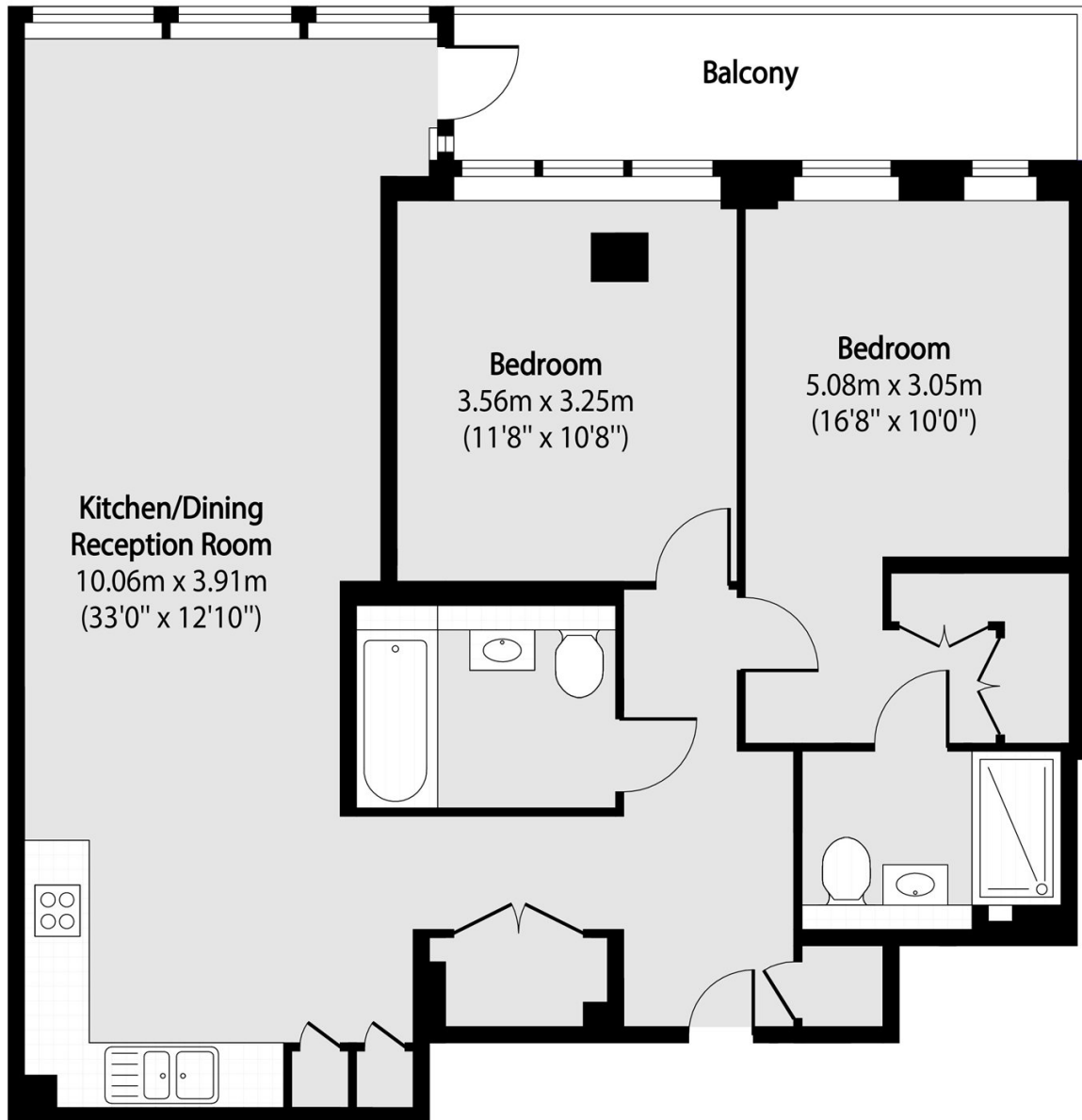
- Modern Two Bedroom
- Two Bathroom
- Balcony
- Virtual Golf & Spa Facilities
- Gym & Swimming Pool
- 24-hours Concierge



A spacious apartment located on the fifth floor of the new high end London Dock development. The property offers two large double bedrooms with fitted wardrobes, two bathrooms, a spacious open reception room and fully fitted kitchen and a private balcony.

London Dock Development is located next to iconic St Katharine's Docks and Tower Bridge with an amazing selection of bars and restaurants.





Total area (approx): 83.05 sq m (894 sq. ft)

Balcony total area (approx): 8.08 sq m (87 sq. ft)

35A Wapping High Street,
 London, E1W 1NR
 020 7702 3456
ea2group.com