



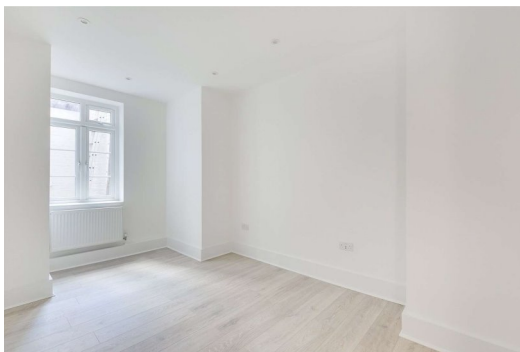
# 40-42 Upper Street

Angel, N1

£400 per week  
(£1,733.33 pcm)

Superb, newly refurbished two double bedroom apartment offered in exceptional condition throughout with brand new kitchen, bathrooms and floors throughout. Located in the heart of Angel, Upper Street

CHESTERTONS



## 40-42 Upper Street

### Angel, N1

- Newly refurbished throughout
- New kitchen, bathroom and wood floors
- Two double bedrooms
- Eat-in kitchen
- In the heart of Angel



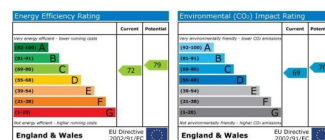
Superb, newly refurbished two double bedroom apartment offered in exceptional condition throughout with brand new kitchen, bathrooms and floors throughout. Located in the heart of Angel, Upper Street

Benefits of this spacious apartment include newly fitted wood floors throughout, newly fitted eat-in kitchen with built in appliances, newly fitted bathroom, two double bedrooms both with fitted wardrobes and a good sized separate reception room.

Located in the heart of Upper Street just moments from Angel station.

**Tenure:** To be advised  
**Unfurnished**

Additional tenant charges apply (fees apply to non-AST tenancies only)  
Tenancy Agreement Fee: £300  
References per Tenant/Guarantor: £60  
Inventory check (approx. £100 – £250 inc. VAT)  
[chestertons.com/property-to-rent/applicable-fees](https://www.chestertons.com/property-to-rent/applicable-fees)



### *Chestertons Islington Lettings*

327-329 Upper Street

London

N1 2XQ

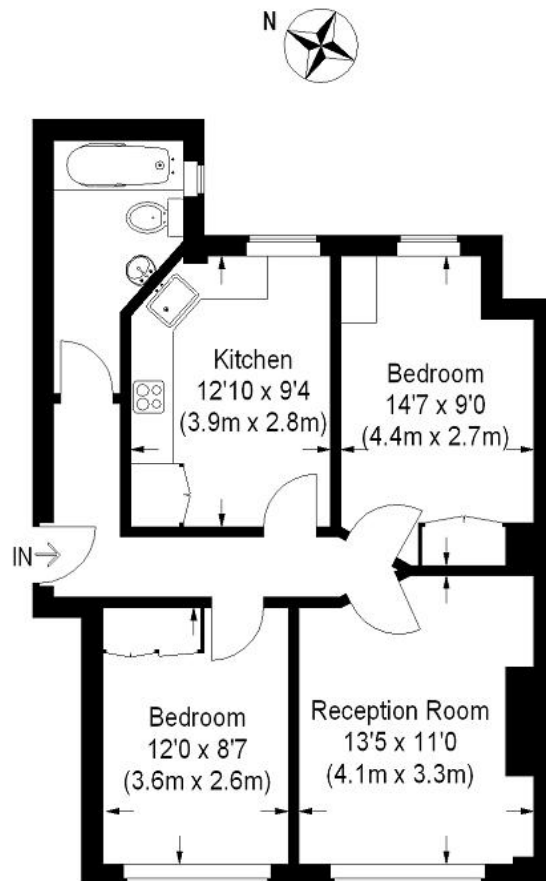
[lettings.islington@chestertons.com](mailto:lettings.islington@chestertons.com)

02072264221

[chestertons.com](https://www.chestertons.com)

# Upper Street, N1

Approximate Gross Internal Area  
635 sq ft / 59 sq m



## First Floor

This plan is for layout guidance only. Not drawn to scale unless stated. Windows and door openings are approximate. Whilst every care is taken in the preparation of this plan, please check all dimensions, shapes and compass bearings before making any decisions reliant upon them. (ID51862)

