



📍 12 Palmer Road, Trowbridge, Wiltshire, BA14 8QP

🔗 Offers In Excess Of £300,000

An extended, three bedroom, two reception room, two bathroom, semi detached bungalow which occupies a generous corner plot with gardens to the front, side and rear, detached double garage and ample driveway parking, conveniently situated within walking distance of amenities.

- Spacious, Extended, Semi Detached Bungalow
- Three Bedrooms, Two Reception Rooms
- Bathroom & Shower Room
- Modern Kitchen With Integrated Appliances
- Corner Plot
- Easily Maintainable Gardens
- Double Garage & Secure Driveway Parking
- Popular Location, Close To Numerous Amenities
- NO ONWARD CHAIN

🏠 Freehold

📊 EPC Rating A



A rare find! An extended, semi detached bungalow which offers spacious, flexible accommodation, occupying a large, corner plot with private, well enclosed gardens, detached double garage and ample driveway parking. The property is situated on an established road, within walking distance of numerous amenities and is offered for sale with NO ONWARD CHAIN.

The excellent accommodation on offer comprises; canopy porch, entrance hall, good sized sitting room with fireplace and inset wood burning stove, superb kitchen with modern units, built in double oven and hob, integrated dishwasher, fridge and freezer, cupboard housing gas central heating boiler and part open plan to a breakfast/dining room, two double bedrooms with French doors opening onto the rear garden, further good sized bedroom, bathroom with white suite and a shower room.

Externally; there is gravelled garden to the front and a path leading to the front door. To the side and rear there are easily maintainable gardens which are well enclosed and enjoy a good deal of privacy. To the side of the bungalow there is a section of artificial lawn and to the rear there is a paved patio seating area which leads onto a gravelled area.

Detached, double garage with up and over door to front, door to side, power and lighting. Large, secure driveway for parking numerous which can be accessed via Murray Road.

Situation

Palmer Road is situated just off Seymour Road, close to the town centre of Trowbridge, which is the County town of Wiltshire. The town offers a wide range of amenities including various supermarkets and retail outlets, swimming pool and sports centres, library, doctors and dental surgeries, cinema complex with various bars and restaurants and a mainline railway station providing direct access to the cities of Bath, Bristol and London Waterloo. There are also numerous primary schools and three secondary schools. The World Heritage City of Bath is about 12 miles away and provides an extensive range of amenities with excellent shopping facilities, The Theatre Royal, Thermae Bath Spa, a cinema, numerous restaurants, many schools and a mainline railway station providing direct access to London Paddington.

Property Information

Council Tax Band; C

EPC Rating; A

Freehold

Mains Services

Gas Fired Central Heating & UPVC Double Glazing



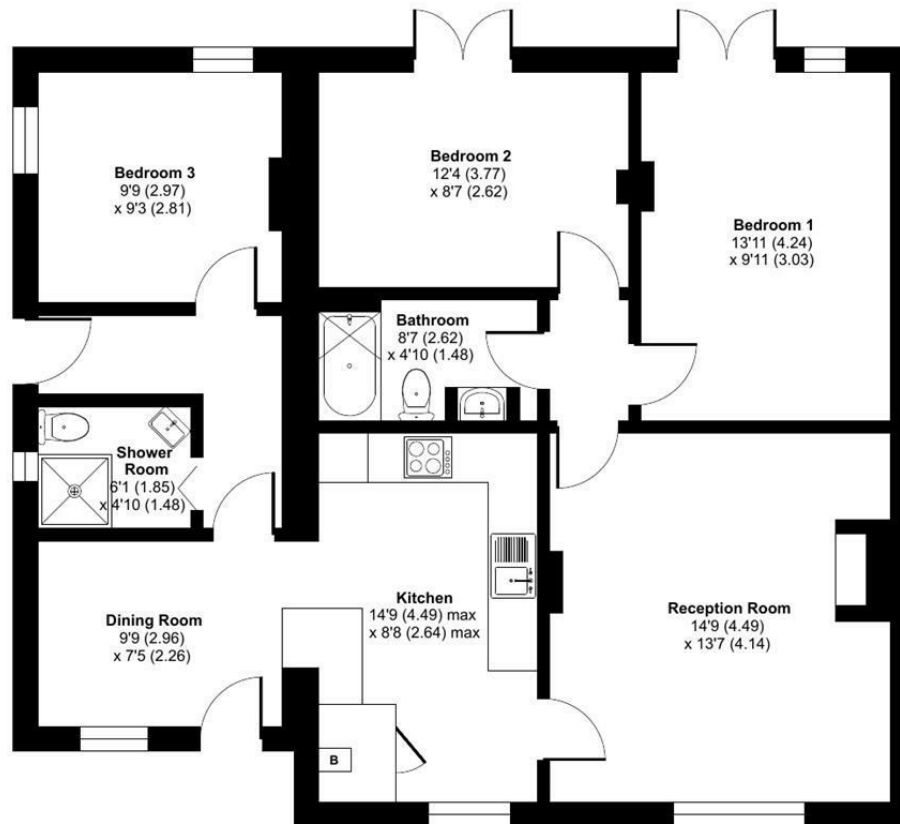
Palmer Road, Trowbridge, BA14

Approximate Area = 957 sq ft / 88.9 sq m

Garage = 401 sq ft / 37.2 sq m

Total = 1358 sq ft / 126.1 sq m

For identification only - Not to scale



GROUND FLOOR



Floor plan produced in accordance with RICS Property Measurement 2nd Edition, Incorporating International Property Measurement Standards (IPMS2 Residential). © ntechcom 2026. Produced for Strakers. REF: 1483909

Disclaimer These particulars, whilst believed to be accurate are set out as a general outline only for guidance and do not constitute any part of an offer or contract. Intending purchasers should not rely on them as statements of representation of fact, but must satisfy themselves by inspection or otherwise as to their accuracy. No person in this firm's employment has the authority to make or give any representation or warranty in respect of the property. All measurements and distances are approximate only. Your home is at risk if you do not keep up repayments on a mortgage or other loan secured on it.