

Principal Place, London EC2A

£650,000 Leasehold







Description

This immaculately finished 1 bedroom apartment is situated on the 8th floor of the famous Principal Tower. Comprising an inviting open plan reception with fully fitted kitchen, large private balcony, well-sized double bedroom with fitted wardrobes and a pristine bathroom suite. The property benefits from under-floor heating, comfort cooling and oak herringbone flooring throughout.

Principal Tower boasts an idyllic location, a short walk to Liverpool Street Station (0.3 miles) as well as Shoreditch High Street Station (0.3 miles). The development boasts excellent amenities including a pool with a Jacuzzi, spa, state of the art gymnasium, residents' lounge/bar, private cinema room and 24 hour concierge.

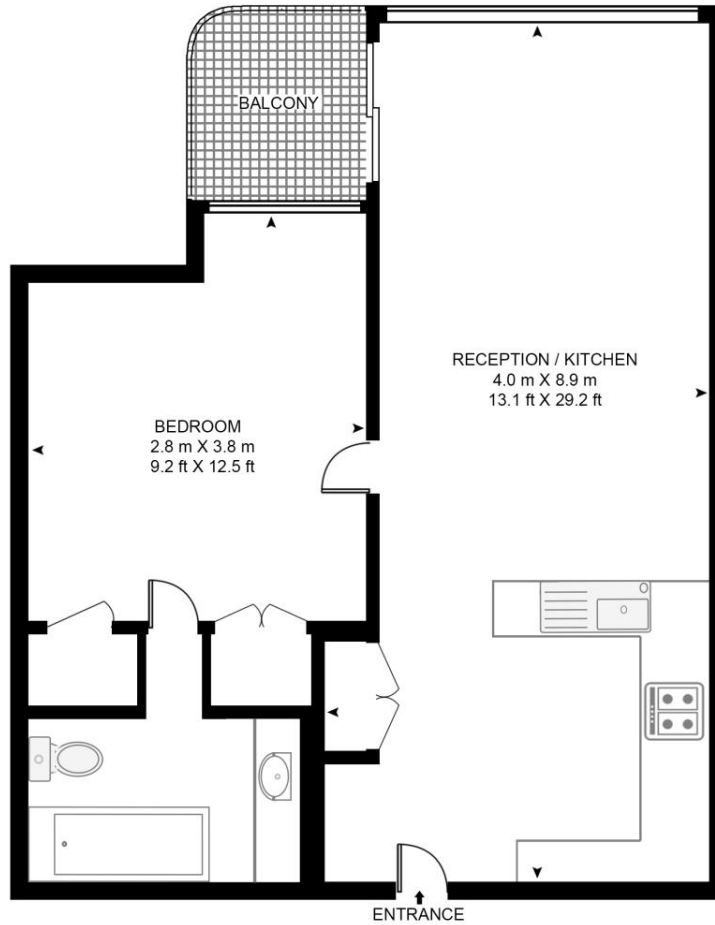
- 1 Spacious Bedroom
- 8th Floor East Facing Views of London
- Open Plan Kitchen & Living Space
- Large Private balcony
- State of the Art Gymnasium
- Residents Pool & Spa
- 24 Hour Concierge
- 0.3 miles from Liverpool Street Station
- Approx. 541 sq ft (50.6 sq m)
- EPC: B

Floorplan

541 sq ft | 50 sq m

PRINCIPAL TOWER, PRINCIPAL PLACE

APPROXIMATE GROSS INTERNAL FLOOR AREA 541 SQ.FT (50.3 SQ.M)



EIGHTH FLOOR



This floor plan has been defined by the RICS Code of Measurement. This floor plan and all others are for approximate representative purposes only and upon usage is agreed to as such by the client.
WWW: hdvirtualart.com | TEL: 0203.974.1567 | EMAIL: info@hdvirtualart.com

City
25 Walbrook The Walbrook
Building,
London EC4N 8AF
+4420 7337 4000

Urban living, your way.

jll.co.uk/residential

© 2019 Jones Lang LaSalle IP, Inc. All rights reserved. All information contained herein is from sources deemed reliable; however, no representation or warranty is made to the accuracy thereof.

