

BASSETT ROAD



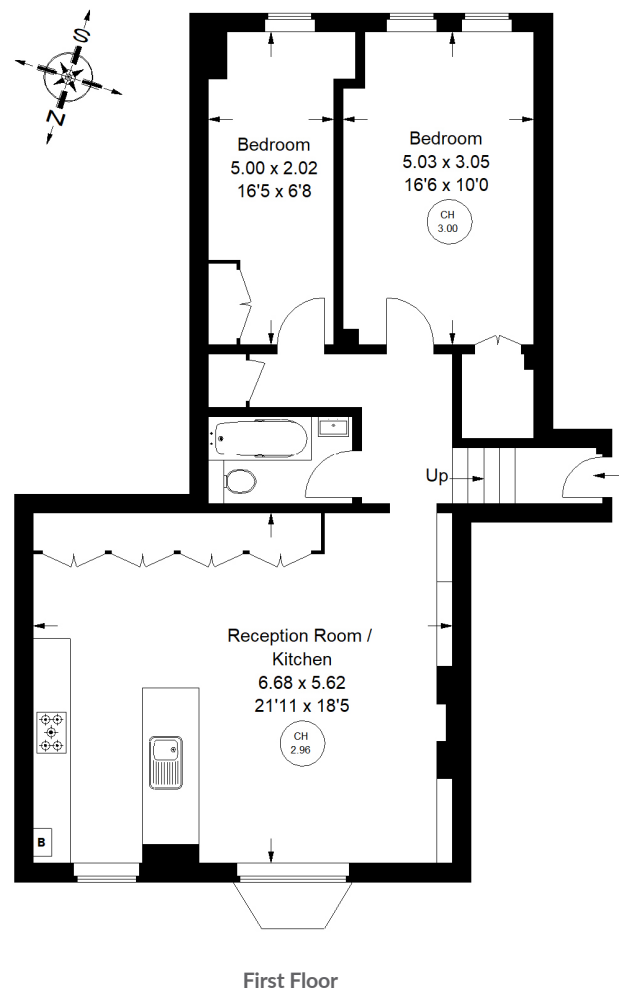


Bassett Road, W10

A stunning first floor flat in this elegant building on one of the best regarded roads in North Kensington. This bright flat has a large open plan reception room, two double bedrooms and bathroom and benefits from a communal garden. Bassett Road is generally considered one of the finest streets in W10 with its grand period villas and close proximity to Ladbroke Grove, Golborne Road, Portobello Road and all the other fabulous amenities of Notting Hill. Latimer Road & Ladbroke Grove Underground Stations for the Hammersmith, City and Circle lines are within easy reach.



Approx. Gross Internal Area = 78.3 sq m / 843 sq ft



Bassett Road, W10 - Share of Freehold

Local Authority - **Royal Borough of Kensington & Chelsea**

- Two bedrooms
- One bathroom
- Large reception room
- Communal garden
- Period house
- Council Tax Band: F
- Remaining Lease: 967 years



Whilst every attempt has been made to ensure the accuracy of the floor plan, measurements are approximate and not to scale. No guarantee is given on the total square footage of the property quoted on the plan. Figures given are for guidance. Plan is for illustration purposes only, not to be used for valuations.