



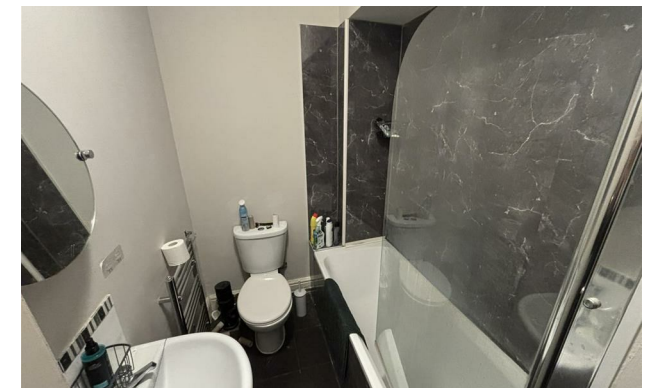
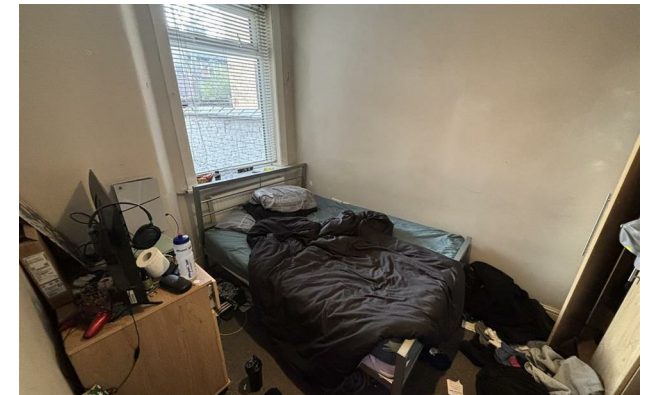
jordan fishwick

80 Whitby Road, M14 6QL
Guide Price £3,034 Per Calendar Month



**Whitby Road Fallowfield
M14 6QL**

£3,034 Per Calendar Month



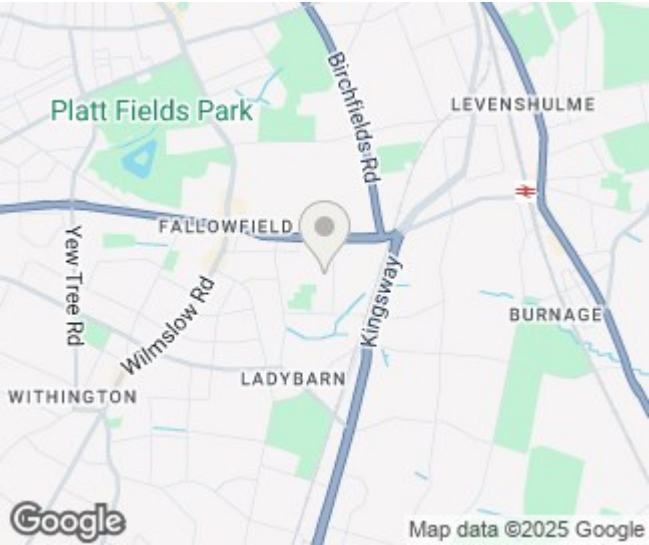
The Property


*** AVAILABLE 1ST JULY 2026 *** £140.00 PPPW *** HALF RENT FOR JULY ONLY *** NO DEPOSIT OPTION AVAILABLE ***
BILLS PACKAGE AVAILABLE *** Amazing five double bedroom property! The property has undergone a full refurbishment in the recent years and really is a student home to be proud of. The house offers modern well fitted accommodation throughout and is furnished to a high standard. Five Bedrooms, Two Bathrooms, Two Reception Rooms. Warmed by gas central heating. Furnished to a high level. Bills Package available - enquire with the agent. To view please contact our Didsbury office.

View our Virtual Tour Here - <https://youtu.be/JMazJgsCXo4>

EPC Rating - D // Council Tax Band B

- Available July 2026
- £140.00 PPPW
- Five Double Bedrooms
- Two Bathrooms
- Fully Furnished
- Half Rent July Only
- No Deposit Option Available
- Bills Package Available
- EPC Rating - D
- Council Tax Band B



Energy Efficiency Rating		
	Current	Potential
Very energy efficient - lower running costs		
(92 plus) A		84
(81-91) B		
(69-80) C		
(55-68) D	65	
(39-54) E		
(21-38) F		
(1-20) G		
Not energy efficient - higher running costs		
England & Wales		EU Directive 2002/91/EC 





These particulars are believed to be accurate but they are not guaranteed and do not form a contract. Neither Jordan Fishwick nor the vendor or lessor accept any responsibility in respect of these particulars, which are not intended to be statements or representations of fact and any intending purchaser or lessee must satisfy himself by inspection or otherwise as to the correctness of each of the statements contained in these particulars. Any floorplans on this brochure are for illustrative purposes only and are not necessarily to scale.

Offices at: Chorlton, Didsbury, Disley, Hale, Glossop, Macclesfield, Manchester Deansgate, Manchester Whitworth Street, New Mills, Sale, Wilmslow and Withington