



Shaa Road, W3

£375,000

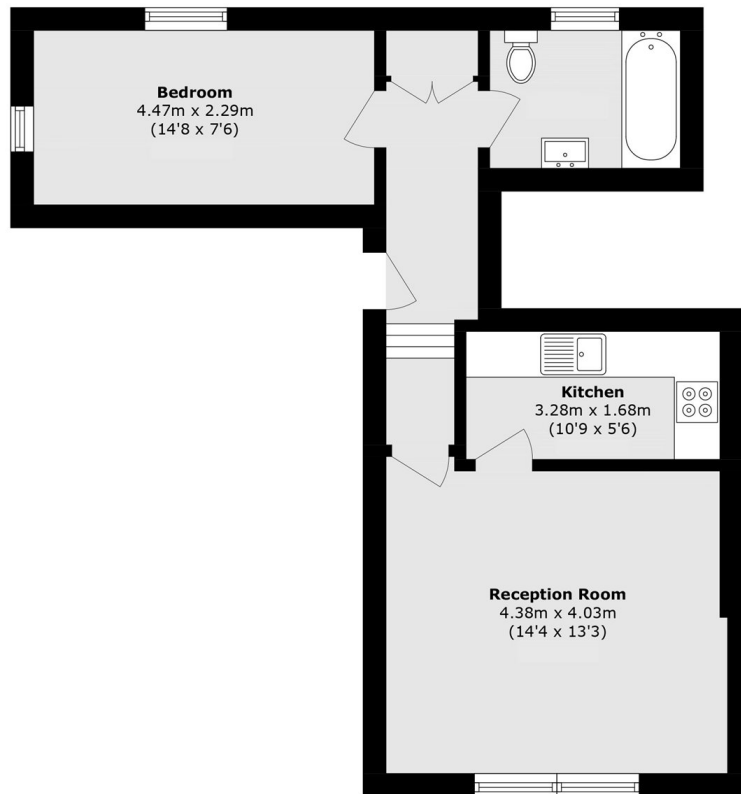
A large one-bedroom conversion within an imposing building on one of Acton's prime roads. This property benefits from allocated off-street parking, a share of the freehold, and will be sold with no onward chain.

Shaa Road is ideally located 0.3 miles from Acton Central (Overground), 0.6 miles from Acton Main Line (Elizabeth Line), and 0.5 miles from East Acton (Central Line). It offers easy access to the shops, restaurants, and bars on Churchfield Road.

Features

- One Double Bedroom
- First Floor
- Period Conversion
- Off Street Parking
- Communal Gardens
- No Onward Chain

Shaa Road, London, W3



Total area (approx.): 46.1 sq. m (496.2 sq. ft)