

Boardwalk

# Brentry Avenue

LAWRENCE HILL, BRISTOL

## Brentry Avenue LAWRENCE HILL

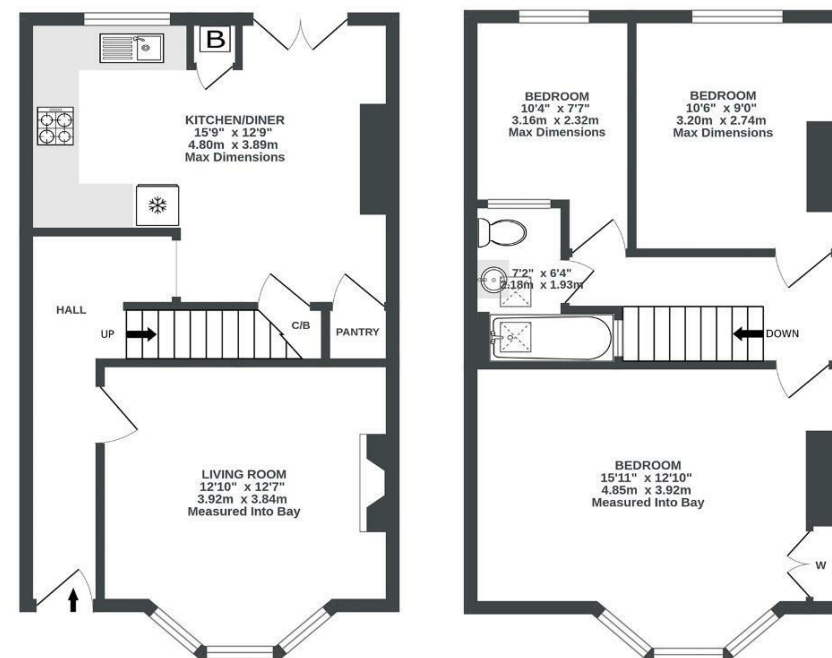
APPROXIMATE FLOOR AREA  
79.2 SQM / 853 SQFT



GROUND FLOOR  
426 sq.ft. (39.6 sq.m.) approx.



1ST FLOOR  
426 sq.ft. (39.6 sq.m.) approx.



Illustrations are for reference purposes only, measurements are approximate, not to scale.

Boardwalk

# Brentry Avenue

## LAWRENCE HILL, BRISTOL

£

£375,000



BS5 0DL

zzz

3 Bedrooms



1 Bathrooms

*"We have put our hearts and souls into making the building we bought seven years ago into our lovely family home. We have made many memories, we have hosted many a party in our garden and we have started a family here. The street and neighbours have a real sense of community and the location is fantastic for getting into and out of town. On top of this its just a ten minute walk from Old Market in one direction or St George the other direction."*

