



Goldhawk Road, W12

£876 Per week

This exceptionally presented split level three bedroom apartment is located within a premier new build development. The property benefits from a spacious open plan living space with a private wrap around balcony.

Goldleaf Apartments is well placed for access to the amenities of Goldhawk Road and transport links of Goldhawk Road station and Shepherds Bush Market.

Features

- Wrap Around Roof Terrace
- Large Reception
- Split Level
- New build
- Two Bathrooms
- Walk In Wardrobe



Goldhawk Road, W12

Situated in this remodelled and modernised building, this modern three bedroom apartment offers ample natural light and a private wrap around roof terrace. The spacious and easy flowing accommodation comprises of an open plan reception room with a modern fitted kitchen, three double bedrooms and two bathrooms.

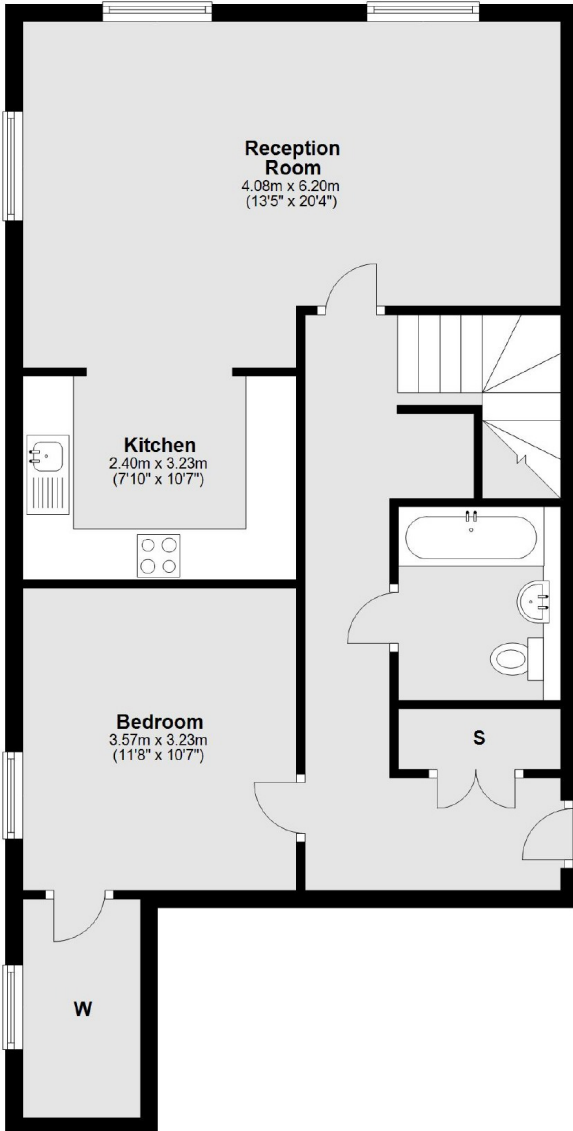
Goldleaf Apartments sits on the Goldhawk Road in cosmopolitan West London, a re-imagining of an existing building into ten contemporary duplex and lateral apartments.

Boasting high specification with stylish contemporary finishes these properties are also conveniently located in the heart of West London in one of London's most culturally vibrant neighbourhoods and within easy reach of Central London, Heathrow Airport and Underground stations.

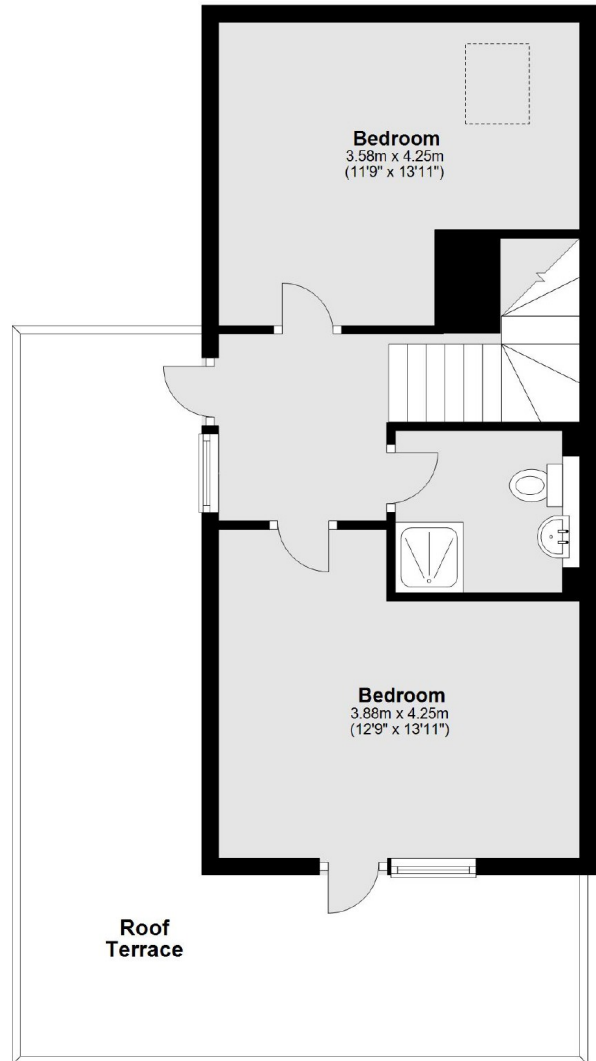


Goldhawk Road, London, W12

Fourth Floor



Fifth Floor



Main area: Approx. 110.6 sq. metres (1190.8 sq. feet)
Plus roof terrace, approx. 28.8 sq. metres (309.7 sq. feet)