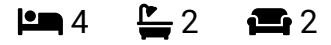


REBEKAH PHILIPPART



Clos Healy, Gowerton. Swansea. SA4 3DS

Offers In Region Of £255,000



- Four-bedroom end-terrace property
- Fully enclosed rear garden with patio and lawn
- Family bathroom to the first floor
- Ground floor cloakroom (WC)
- Solar panels for improved energy efficiency
- Driveway providing off-road parking for multiple vehicles
- Sought-after location
- No onward chain
- Freehold
- Quote ref: RP742

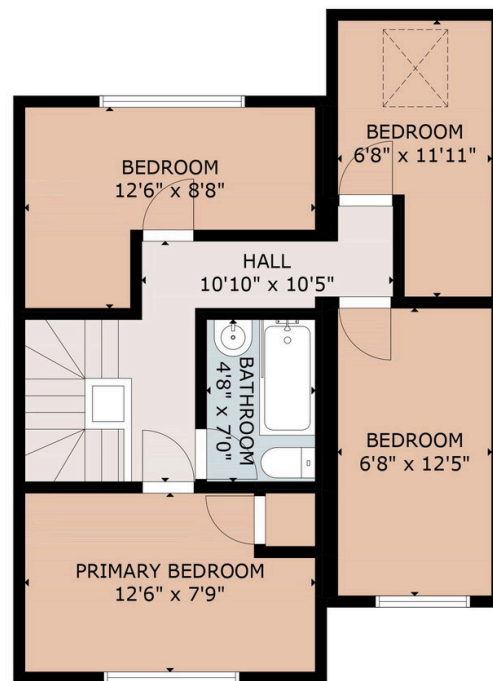
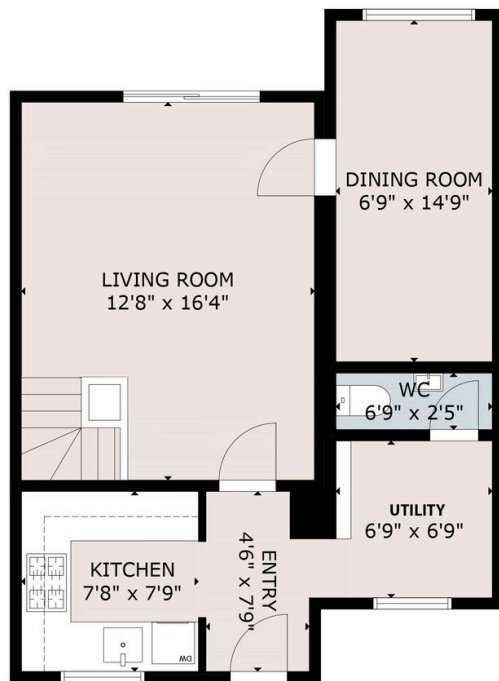
Swansea & Surrounding Areas

07474 991460

rebekah.philippart@exp.uk.com

REBEKAH PHILIPPART

POWERED BY
exp UK



GROSS INTERNAL AREA
TOTAL: 989 sq ft
GROUND FLOOR: 498 sq ft, FIRST FLOOR: 491 sq ft
SIZE AND DIMENSIONS ARE APPROXIMATE, ACTUAL MAY VARY

Situated in the sought-after residential area of Gowerton, this well-presented four-bedroom end-terrace home on Clos Healy is located on the popular Elba development, next door to the local school and sports fields, making it ideal for families. The property offers spacious and versatile accommodation suited to first-time buyers, growing families or those looking to upsize. Internally, there is a bright living room with direct access to the rear garden, a separate dining room, fitted kitchen, useful utility room and a ground floor cloakroom. To the first floor are four bedrooms, providing flexible space for family living, guests or home working, along with a family bathroom. Externally, the home benefits from a fully enclosed rear garden with patio and lawn, rear access, and a driveway providing off-road parking for multiple vehicles. Solar panels enhance energy efficiency. Convenient for shops, amenities and M4 access.

Swansea & Surrounding Areas

07474 991460

rebekah.philippart@exp.uk.com