



Castles

ASKING PRICE

£415,000

Avondale Crescent

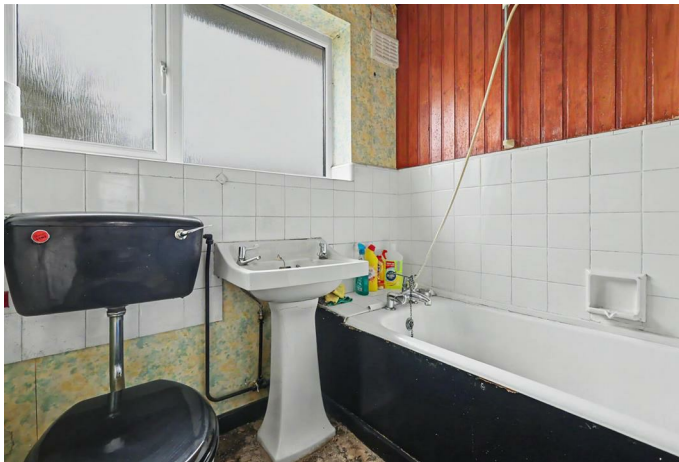
Enfield, EN3 7RZ

PROPERTY SUMMARY

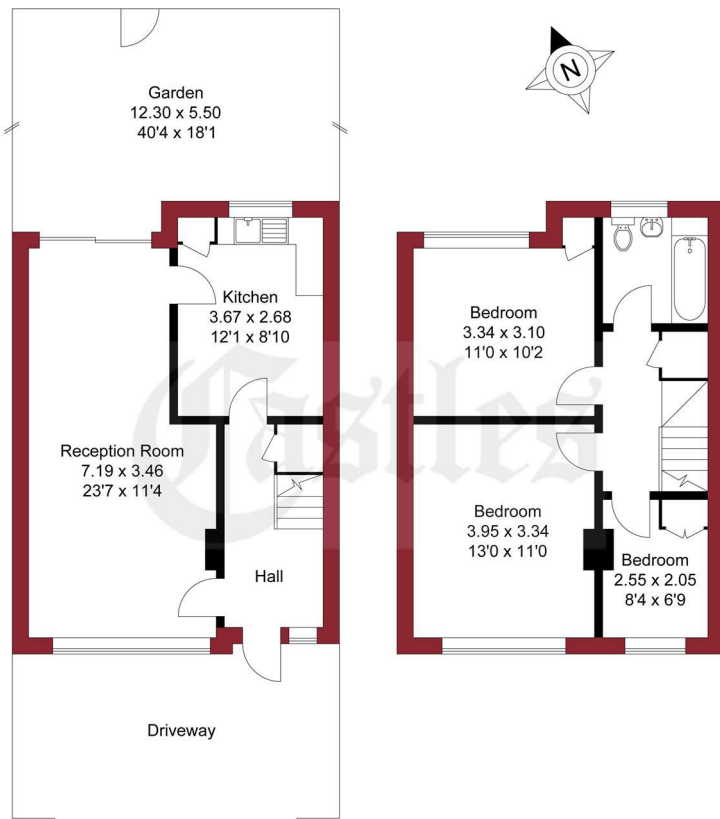
A 3 bedroom mid-terraced family house located off Alma Road close to Brimsdown Train Station (serving London Liverpool Street) and close to Durants Park and local schools. The property is offered for sale chain free and requires refurbishment/modernisation throughout. Viewing is recommended. Features include:-
Front off street parking,
Garage to rear via service road,
Living room,
1st floor bathroom.

Please note:- The property may not be suitable for buy to let mortgage applications.





APPROXIMATE GROSS INTERNAL AREA
80.76 sqm / 869.29 sqft

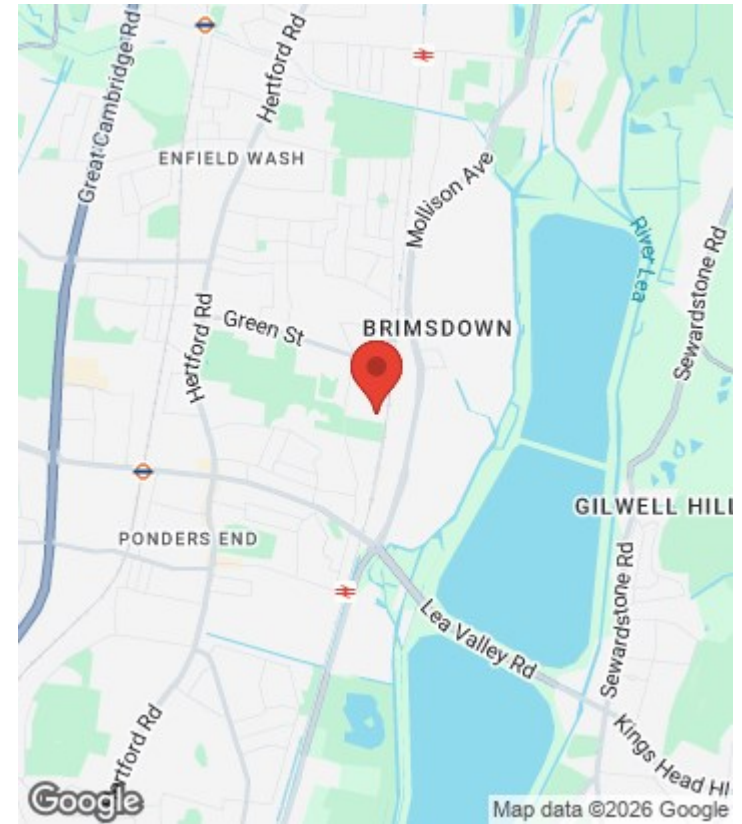
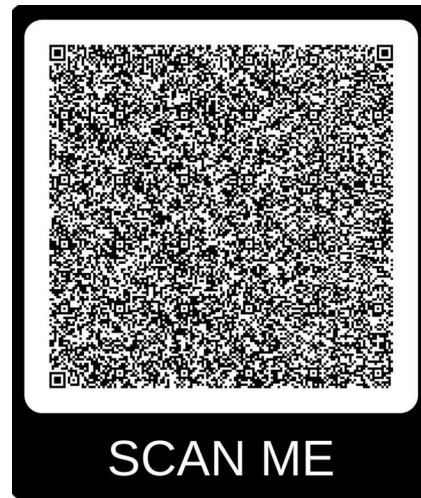


GROUND FLOOR

FIRST FLOOR

THIS PLAN IS FOR ILLUSTRATION ONLY AND MAY NOT BE REPRESENTATIVE OF THE PROPERTY

For a guide to the area please scan this code for more information



House

Freehold

Council: enfield

Council Tax Band: D

Agents Note: Whilst every care has been taken to prepare these particulars, they are for guidance purposes only. All measurements are approximate and are for general guidance purposes only and whilst every care has been taken to ensure their accuracy, they should not be relied upon and potential buyers/tenants are advised to recheck the measurements



OFFICE ADDRESS

243 - 245 Hertford Road
Enfield
London
EN3 5JJ

OFFICE DETAILS

0208 804 8000
enfield@castles.london
<https://www.castles.london>

