



Dartmouth Road, NW2

Leasehold - £499,950

Set within an attractive red brick period building on the ever-popular Dartmouth Road, this charming two-bedroom top-floor (third floor) flat offers a wonderful blend of character, natural light, and well-proportioned accommodation.

The property retains a wealth of original features, adding warmth and personality throughout. The accommodation comprises a bright and inviting reception room, ideal for both relaxing and entertaining, alongside two well-sized bedrooms. A separate kitchen provides practical space for cooking, while the bathroom is fitted with a basin, shower stall and WC.

Positioned on the top floor, the flat enjoys an elevated outlook and an abundance of natural light, enhancing the sense of space throughout.

Dartmouth Road is superbly located for the amenities of Willesden Green, with a variety of shops, cafés, and restaurants close by. Excellent transport links are available via Willesden Green Station (Jubilee Line, Zone 2), providing swift access into Central London and beyond. The green open spaces of Gladstone Park are also within easy reach.

This is a fantastic opportunity to acquire a characterful period home in a highly sought-after North West London location.



020 7328 2828

enquiries@cameronsstiff.co.uk

cameronsstiff.co.uk

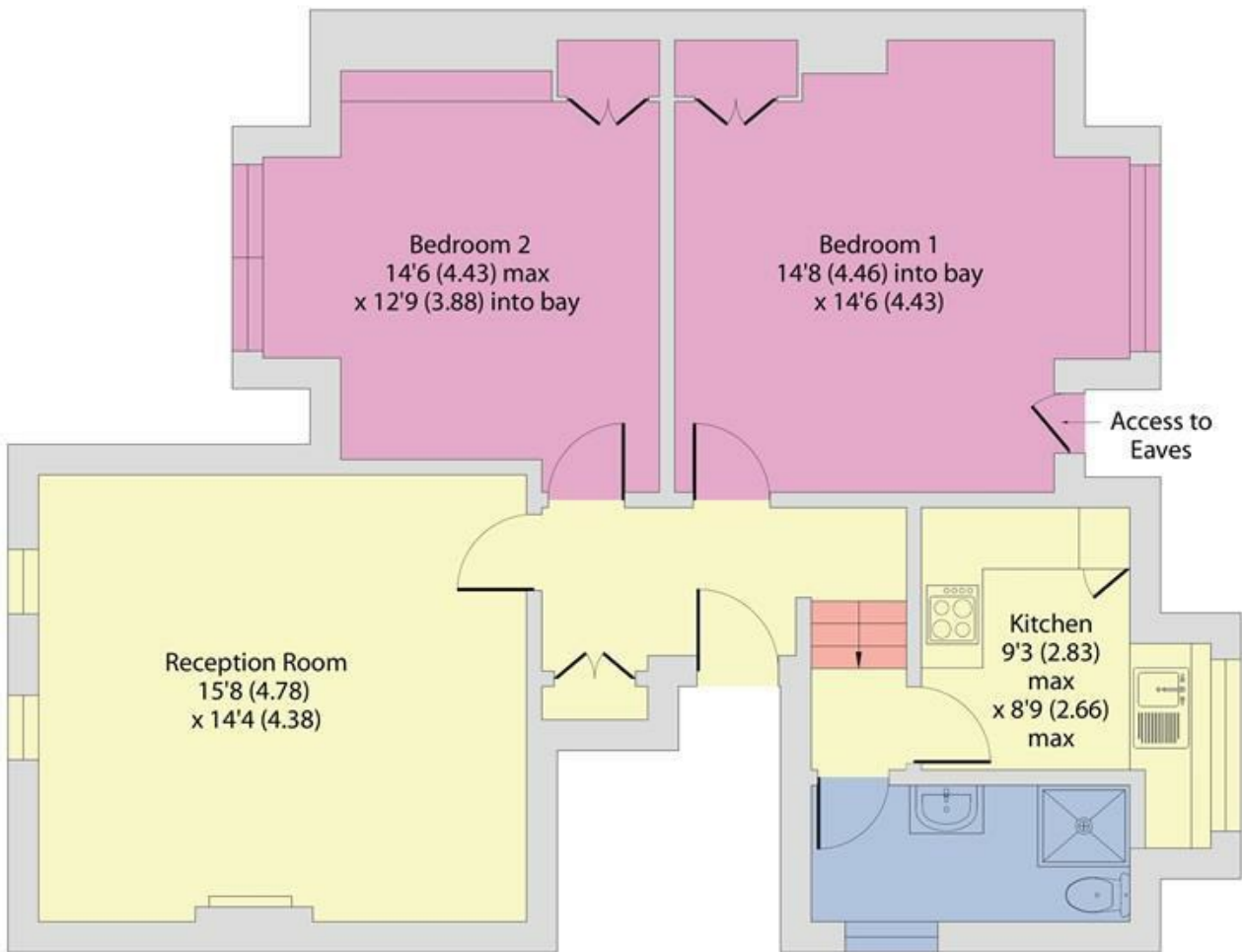




Dartmouth Road, London, NW2

Approximate Area = 801 sq ft / 74.4 sq m

For identification only - Not to scale



SECOND FLOOR

EPC: C

Ref: 19711348



Floor plan produced in accordance with RICS Property Measurement 2nd Edition, Incorporating International Property Measurement Standards (IPMS2 Residential). © ncthecom 2025. Produced for Camerons Stiff & Co. REF: 1437500

