

106, The Old Meadow, Abbey Foregate, Shrewsbury, SY2 6GA
£995 Per Month



106, The Old Meadow, Abbey Foregate, Shrewsbury, SY2 6GA

£995 Per Month

Superb modern two double bedroom second floor apartment benefitting from tremendous elevated views across the River Severn towards St Mary's Court and Shrewsbury town centre. Part of a prestigious gated development with allocated parking and lift access.

Available: 05/12/2025

Description

Comprising: Spacious communal entrance hall, lift access to second floor landing, entrance hall with intercom, store cupboard, bathroom including shower, master bedroom including ensuite shower room and double wardrobe, further double bedroom with wardrobes, open plan living room including fitted kitchen with dishwasher, double oven and gas hob, fitted fridge/freezer, washing machine. Blinds included. Gas central heating. Allocated gated parking space. EPC B



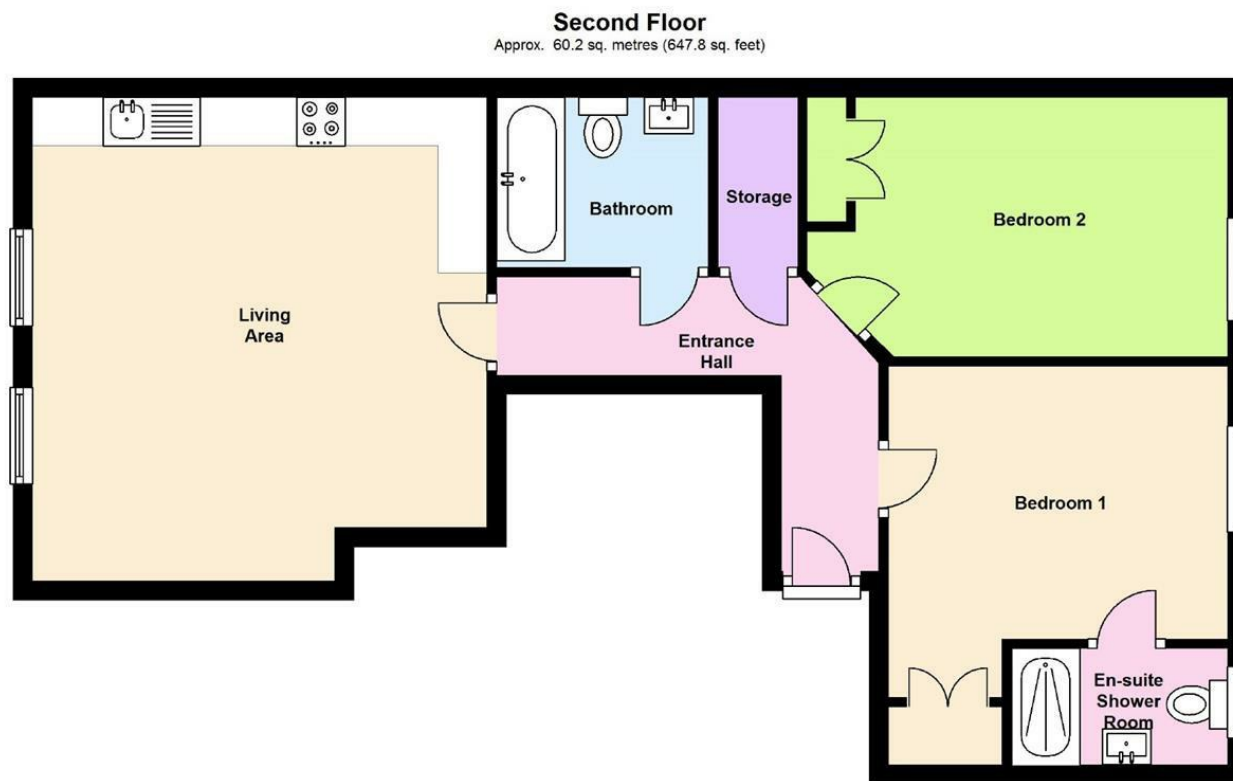
Unfurnished

Council Tax Band: B

Available: 5th December 2025

EPC: B

Floor Plans



Total area: approx. 60.2 sq. metres (647.8 sq. feet)

We accept no responsibility for any mistake or inaccuracy contained within the floorplan. The floorplan is provided as a guide only and should be taken as an illustration only. The measurements, contents and positioning are approximations only and provided as a guidance tool and not an exact replication of the property.

Plan produced using PlanUp.

These particulars, whilst believed to be accurate are set out as a general outline only for guidance and do not constitute any part of an offer or contract. Intending purchasers should not rely on them as statements of representation of fact, but must satisfy themselves by inspection or otherwise as to their accuracy. No person in this firm's employment has the authority to make or give any representation or warranty in respect of the property.