



# CROWN

## ESTATE AGENTS

### Keswick Drive, Castleford



**£800 Per Calendar Month**



2



1



1



59

This charming semi-detached home in Castleford is the perfect choice for a family seeking comfort, convenience, and community. With its spacious living areas, ample storage options, and prime location, it offers a perfect setting for creating cherished memories and enjoying the best that family life has to offer. Don't miss your chance to make this wonderful property your new home.



- Spacious Lounge with Laminate Flooring
- Fitted Kitchen with Pantry Storage
- Two Double Bedrooms with Built In Cupboards
- Three Piece Family Bathroom
- Double Glazed & Electric Heating
- Drive to the Front
- Small Garden to the Rear and Outbuilding to the Side
- EPC Grade D
- Council Tax Band A

Call **01977 285 111** to view this property or visit [www.crownestateagents.com](http://www.crownestateagents.com)

Opening hours:  
Mon - Fri 9am - 5pm  
Sat 10am - 2pm

Crown Estate Agents: 39-41 Ropergate, Pontefract WF8 1JY & 22 Bank Street, Castleford WF10 1JD. **CASTLE DWELLINGS**

### Entrance Hall

The front door leading in to the Reception Hall.

### Lounge

A spacious lounge, Diner with feature fireplace with hearth. Two Windows make the room open and bathed in daylight. With two radiators to keep cosy in winter months and laminate flooring to run seamlessly in to the dining area.

### Kitchen

The kitchen provides the space for all your cooking needs with an integrated hob, oven and extractor. Ample storage in cornflower blue base and wall units.

### Bedroom 1

The main double bedroom with fitted carpets and a windows looking out to the front of the property.

### Bedroom 2

The second double bedroom Double Bedroom with white walls and fitted carpet.

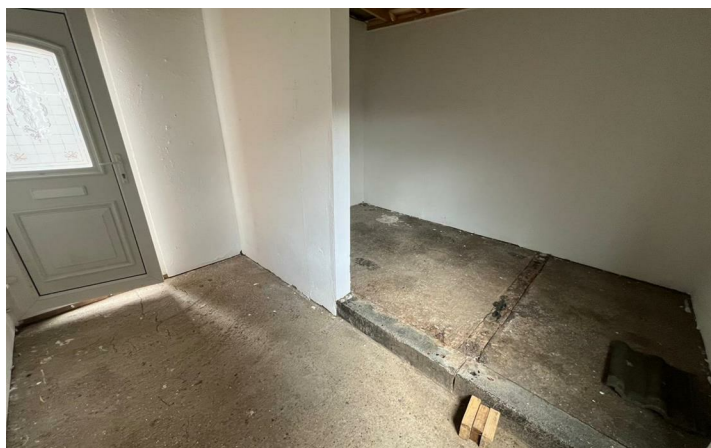
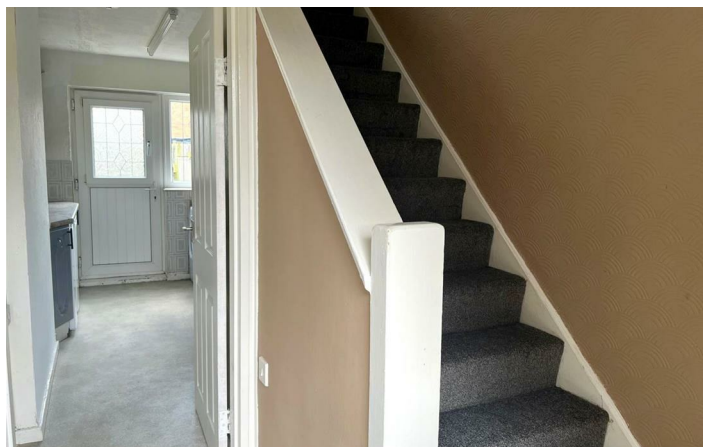
### Family Bathroom

A beautiful white three piece suite with a heated towel rail and bath with shower over. Fully tiled in grey and a vanity unit under the sink.

### External

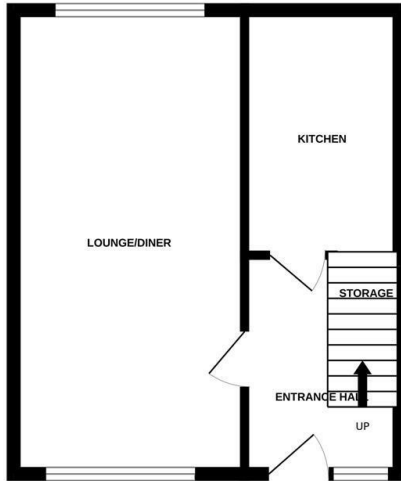
With a drive to the front, a pebbled area to the side, a very useful outbuilding to the side and a small garden to the rear.



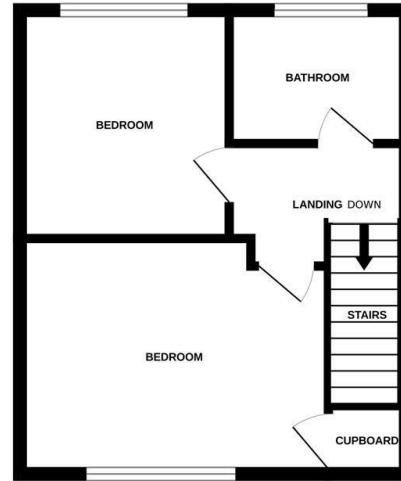


## Floor Plan

GROUND FLOOR




1ST FLOOR



Whilst every attempt has been made to ensure the accuracy of the floorplan contained here, measurements of doors, windows, rooms and any other items are approximate and no responsibility is taken for any error, omission or mis-statement. This plan is for illustrative purposes only and should be used as such by any prospective purchaser. The services, systems and appliances shown have not been tested and no guarantee as to their operability or efficiency can be given.  
Made with Metropix ©2025



## Energy Efficiency Rating


	Current	Potential
Very energy efficient - lower running costs		
(92 plus) <b>A</b>		
(81-91) <b>B</b>		<b>87</b>
(69-80) <b>C</b>		
(55-68) <b>D</b>	<b>59</b>	
(39-54) <b>E</b>		
(21-38) <b>F</b>		
(1-20) <b>G</b>		
Not energy efficient - higher running costs		
<b>England &amp; Wales</b>	EU Directive 2002/91/EC	

Please call our Castle Dwellings Ltd Office on 01977 285 111 if you wish to arrange a viewing appointment for this property or if you require further information.

These particulars, whilst believed to be accurate are set out as a general outline only for guidance and do not constitute any part of an offer or contract. Intending purchasers should not rely on them as statements of representation of fact, but must satisfy themselves by inspection or otherwise as to their accuracy. No person in this firm's employment has the authority to make or give any representation or warranty in respect of the property.

Call **01977 285 111** to view this property or visit [www.crownestateagents.com](http://www.crownestateagents.com)

Opening hours:  
Mon - Fri 9am - 5pm  
Sat 10am - 2pm

Crown Estate Agents: 39-41 Ropergate, Pontefract WF8 1JY & 22 Bank Street, Castleford WF10 1JD.  **CASTLE DWELLINGS**