



Guide Price
£225,000

Leasehold

2x 🛏️ 2x 🚿 2x 🚗

**Southgrove Terrace,
Southgrove Road,
Ventnor, Isle of Wight,
PO38**

OVER 60?

Secure this property
for up to **59% less!**

Pittis 
Helping you move forwards



Main features

- First floor apartment with sea views and elevated town views
- En suite to the main bedroom
- Spacious well decorated and maintained with character features
- Private garden with elevated decking area and views
- Allocated parking space

Accommodation

FIRST FLOOR

Hallway

Lounge: 20'5 x 14'2 (6.23m x 4.32m)

Dining Room: 9'5 x 7'11 (2.87m x 2.41m)

Kitchen: 14'2 x 6'5 (4.32m x 1.96m)

Bedroom 1: 13'7 x 10'9 (4.14m x 3.28m)

En Suite

Bedroom 2: 14'9 x 11'1 (4.50m x 3.38m)

Bathroom

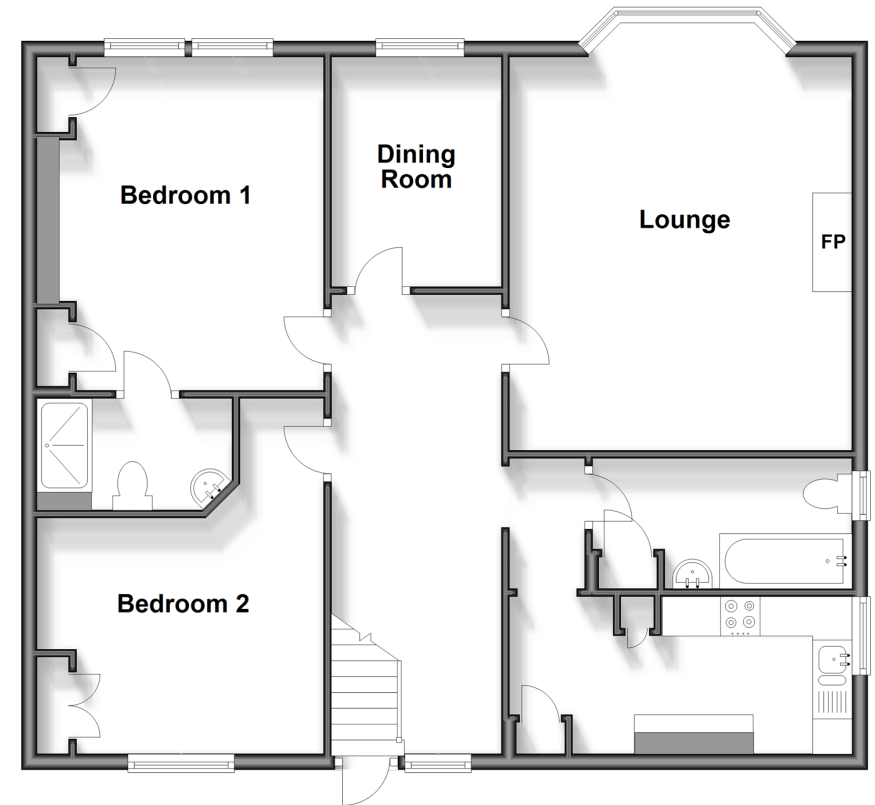
OUTSIDE

Allocated Parking

Private Garden

Split Level First Floor

Approx. 91.7 sq. metres (986.9 sq. feet)



Call Ventnor - 01983 856417 ■ pittis.co.uk

- Legal advice should be taken to verify fixtures/fittings, planning, alterations and/or lease details
- Appliances & services are untested, dimensions are approximate and floor plans are not to scale
- Through a Homewise Home For Life Plan people aged 60+ can secure this property for up to 50% less, by purchasing a Lifetime Lease.



60802214/20251010/CS/RC