

Castles



£230,000
Ainsley Close
London, N9 9SH

PROPERTY SUMMARY

Castles are delighted to present this one bedroom first floor flat situated in a quiet Cul-de Sac with easy access to A10 and good transport links. The property benefits from lounge, kitchen, one bedroom, bathroom, double glazed windows, long lease of 154 years remaining, zero ground rent and is offered for sale on a chain free basis.

154 year lease

Ground Rent:£0.00

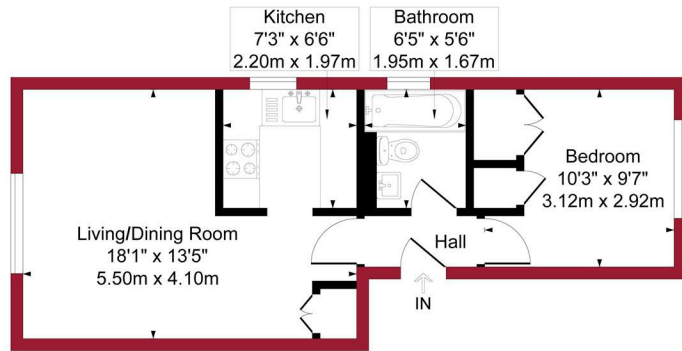
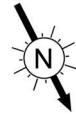
Service Charge: £732.86 Twice a Year





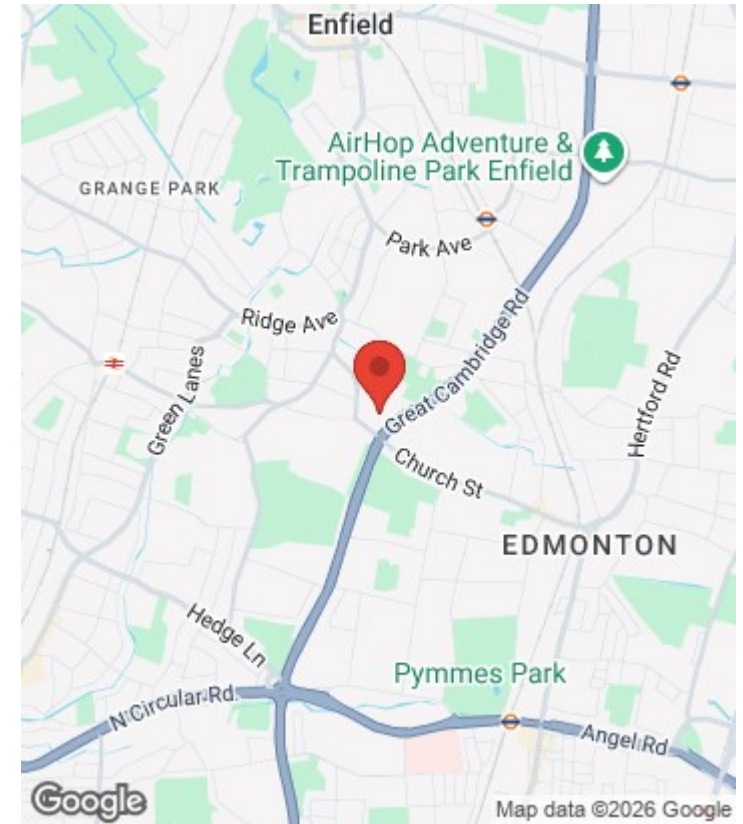
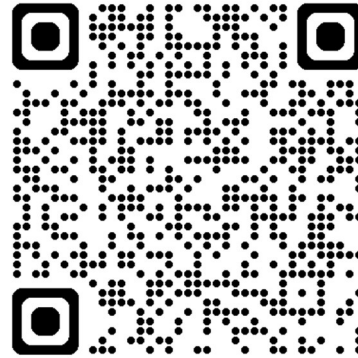
Ainsley Close, London, N9

Approximate Gross Internal Area = 407 sq ft / 37.8 sq m



First Floor

For a guide to the area please scan this code for more information



Flat - First Floor

Leasehold

Council:

Council Tax Band: C

Agents Note: Whilst every care has been taken to prepare these particulars, they are for guidance purposes only. All measurements are approximate and are for general guidance purposes only and whilst every care has been taken to ensure their accuracy, they should not be relied upon and potential buyers/tenants are advised to recheck the measurements



OFFICE ADDRESS

438 Hertford Road
Edmonton
London
N9 8AB

OFFICE DETAILS

020 8804 8123
edmonton@castles.london
<https://www.castles.london/>

Energy Efficiency Rating		Current	Potential
Very energy efficient - lower running costs			
(92-100) A			
(81-91) B			
(69-80) C		73	75
(55-68) D			
(39-54) E			
(21-38) F			
(1-20) G			
Not energy efficient - higher running costs			
England & Wales		EU Directive 2002/91/EC	