



Guide Price

£300,000

Freehold

2x  1x  1x 

**Northbourne Road,
Great Mongeham, Deal,
Kent, CT14**

OVER 60?

Secure this property
for up to **59% less!**

Wards
Helping you move forwards



Main features

- Generously sized sunny garden
- Driveway for three vehicles
- Attractive double fronted property with bay windows to both bedrooms
- Potential for improvements subject to consents, with a sun room and out building
- Semi rural location with acres countryside on your doorstep

Accommodation

GROUND FLOOR

Entrance Hallway

Bedroom 1: 12'6 x 9'8 (3.81m x 2.95m)

Bedroom 2: 13'5 x 9'8 (4.09m x 2.95m)

Lounge : 25'7 x 9'7 (7.80m x 2.92m)

Kitchen : 10'7 x 5'8 (3.23m x 1.73m)

Sun Room : 9'4 x 6'5 (2.85m x 1.96m)

Bathroom

OUTBUILDING

Store

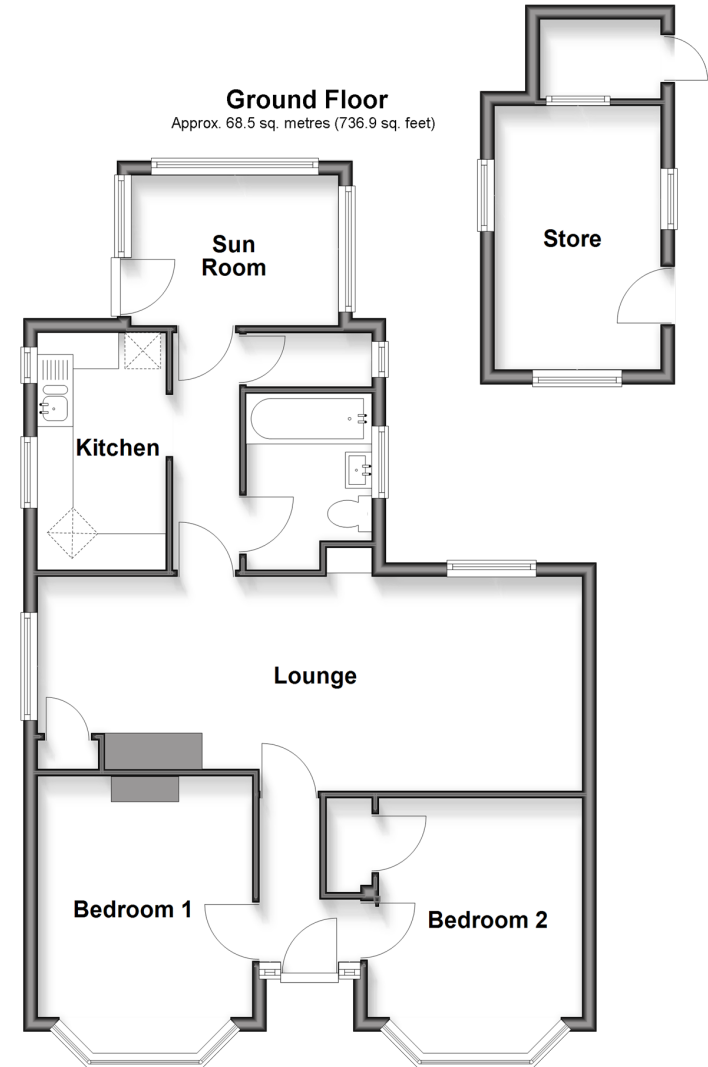
OUTSIDE

Front and Rear gardens

Driveway

Outbuilding
Approx. 10.6 sq. metres (114.3 sq. feet)

Ground Floor
Approx. 68.5 sq. metres (736.9 sq. feet)



Call Deal - 01304 361420 ■ wardsofkent.co.uk

■ Through a Homewise Home For Life Plan people aged 60+ can secure this property for up to 59% less, by purchasing a Lifetime Lease



10635518/20260323/MB/EP