



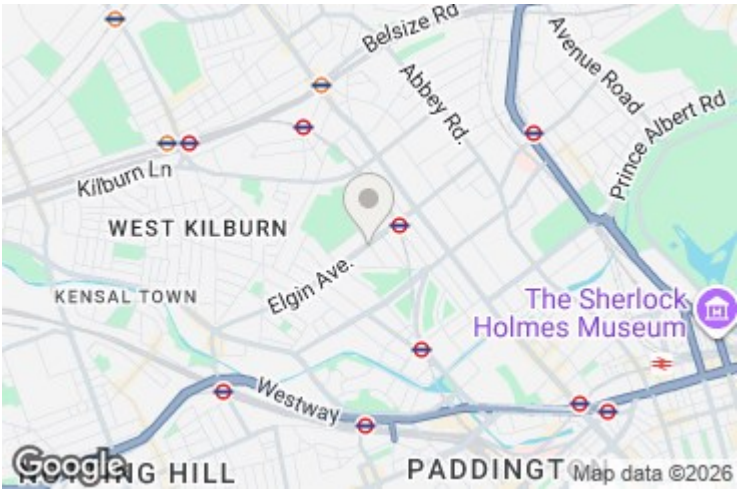
Biddulph Mansions, Elgin Avenue W9

£3,035 Per Month

A beautifully presented and newly refurbished two double bedroom ground floor apartment with a large double reception, a big eat in kitchen with direct access to lovely communal gardens. The property is decorated to a high standard throughout & is situated in this popular red brick mansion block minutes from Paddington Recreation Ground & within easy walking distance of Maida Vale Tube. The property has lots of original features including high ceilings, big windows and a lovely fireplace. Also consists of a family bathroom and separate w/c.

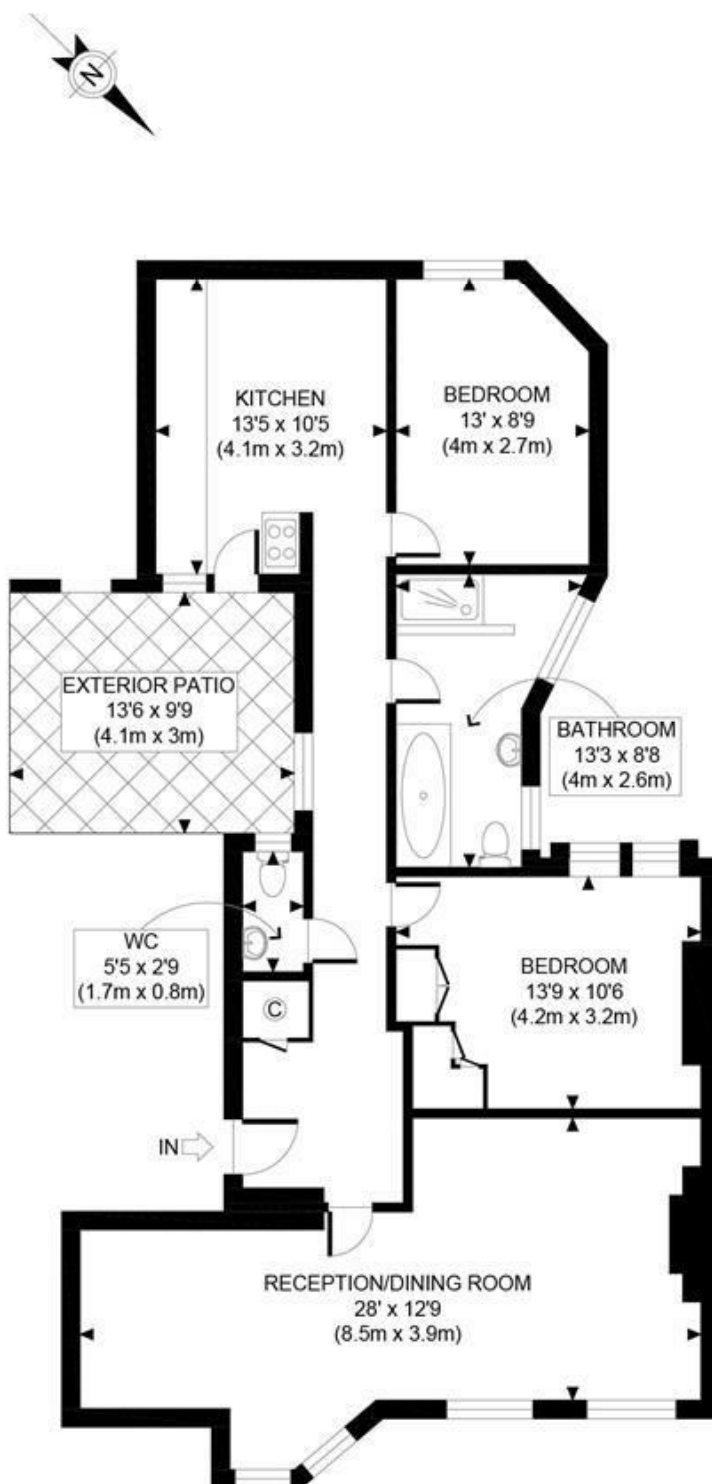
Available: 6th February 2026 | Offered: Part-Furnished
EPC Rating: D | Council Tax: Westminster Band E

Biddulph Mansions, Elgin Avenue W9



Energy Efficiency Rating		
	Current	Potential
Very energy efficient - lower running costs		
(92 plus) A		
(81-91) B		
(69-80) C		
(55-68) D		
(39-54) E	56	58
(21-38) F		
(1-20) G		
Not energy efficient - higher running costs		
England & Wales	EU Directive 2002/91/EC	

Environmental Impact (CO ₂) Rating		
	Current	Potential
Very environmentally friendly - lower CO ₂ emissions		
(92 plus) A		
(81-91) B		
(69-80) C		
(55-68) D		
(39-54) E	50	50
(21-38) F		
(1-20) G		
Not environmentally friendly - higher CO ₂ emissions		
England & Wales	EU Directive 2002/91/EC	



LOWER GROUND FLOOR
GROSS INTERNAL
FLOOR AREA 965 SQ FT

APPROX. GROSS INTERNAL FLOOR AREA 965 SQ FT / 90 SQM

Ref: CR

Copyright **photo**plan

Disclaimer: Floor plan measurements are approximate and are for illustrative purposes only. While we do not doubt the floor plan accuracy and completeness, you or your advisors should conduct a careful, independent investigation of the property in respect of monetary valuation

MAIDA VALE

75 Castellain Road
Maida Vale

London W9 1EU

T 020 7266 5000

F 020 7266 1119

E w9@comptonreeback.co.uk

Est. 1995

Registered Name: Compton Reeback Limited Registration Number: 6880098
Registered Office: 75 Castellain Road, Maida Vale, London W9 1EU

Directors: Brian Compton & Julian Reeback

IMPORTANT NOTICE: All of the information is intended only as a guide to a prospective purchaser and not constitute part of an offer or contract. Any measurements or distances referred to herein are approximate only. Any information contained herein (whether in the text, plans or photographs) is given in good faith but should not be relied upon as being a statement or representation of fact. Should you proceed with the purchase of the property, your solicitor must verify these details. We have not carried out a detailed survey nor tested the services, appliances and specific fittings. In accordance with current legislation we would advise you that the measurements on these particulars are imperial. The formula for conversion to metric is as follows: 1' (one foot) = 30.48cm (centimeters), 1m (one meter) = 3.28' (feet)

comptonreeback.co.uk