



# 87 Cerne Road Gravesend

- Lovely Semi Detached House
- Three Bedrooms
- Thru Lounge/Diner
- Fitted Kitchen
- Secluded Rear Garden
- Over Looks Communal Open Green Lands
- Gas Central Heating
- Double Glazed Throughout
- Garage in block

**£375,000**





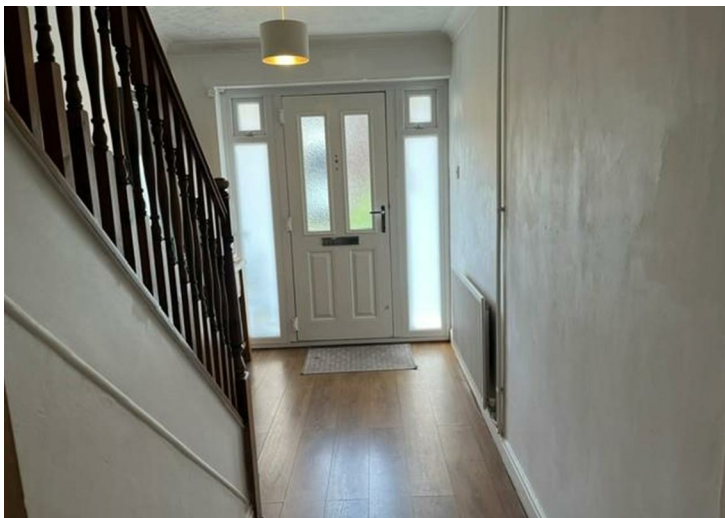
This lovely semi detached three bedroom house occupies a fabulous position overlooking open green lands on the sought after Riverview park development. The property has gas fired central heating, double glazing throughout, secluded rear garden, and a garage in block.

The accommodation includes: entrance hallway, fitted kitchen, lounge, dining room. Upstairs there are three bedrooms and bathroom.

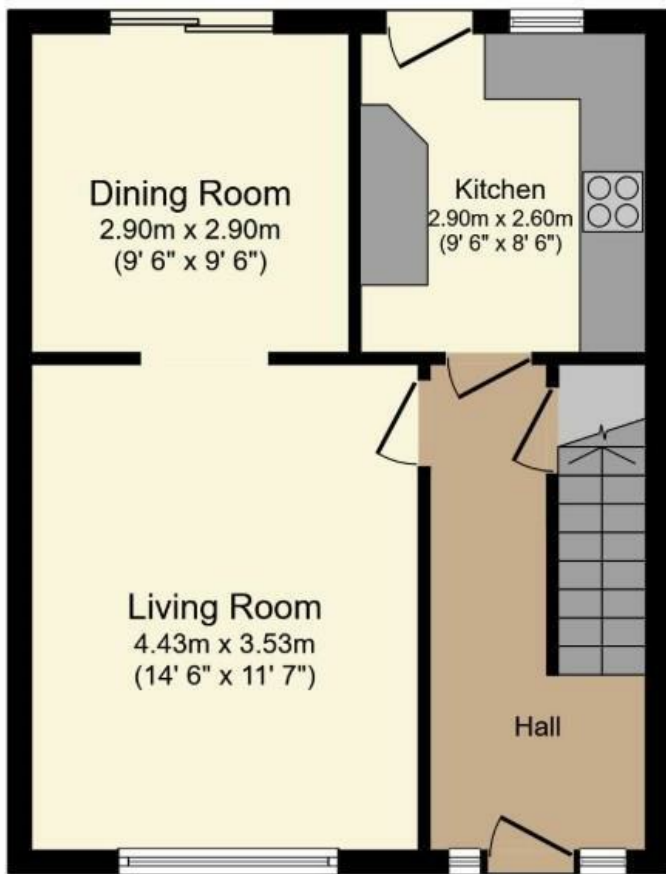
Riverview Park is a sought after residential area ideally located with Riverview Infants & Junior schools & shops in close proximity & Cascades Sports Centre & Southern Valley Golf Club close by. The A2 is only a short drive away with great access to London. There are regular buses into Gravesend Town & to the Station with high speed services into London. Ebbsfleet International & Bluewater are within easy reach too.

Council Tax Band: D

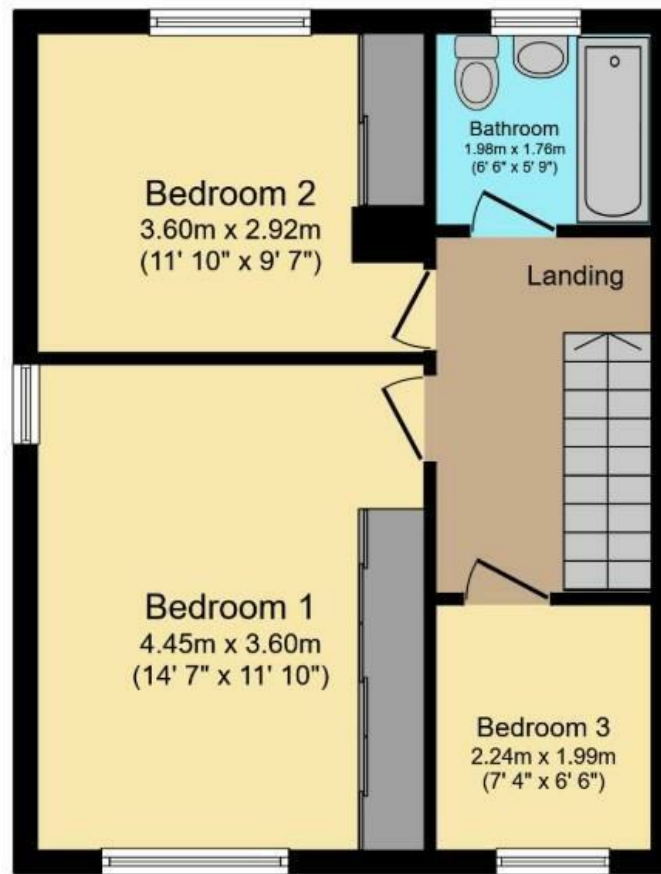
Fixtures and fittings by arrangement other than those mentioned.







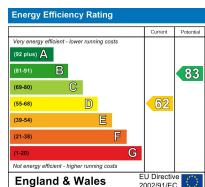
**Ground Floor**



**First Floor**

Total floor area 83.3 sq.m. (897 sq.ft.) approx

This floor plan is for illustrative purposes only. It is not drawn to scale. Any measurements, floor areas (including any total floor area), openings and orientation are approximate. No details are guaranteed, they cannot be relied upon for any purpose and they do not form part of any agreement. No liability is taken for any error, omission or misstatement. A party must rely upon its own inspection(s). Plan produced for Purplebricks. Powered by www.focalagent.com



Appliances and services are untested. Dimensions are approximate and floorplans are not to scale. Fixtures and fittings, planning and alterations, lease details if applicable, should all be verified legally.

Open: Monday-Friday 9am-5.30pm  
Saturday 9am-5pm

**4 The Row, New Ash Green  
Kent DA3 8JG**

**1 The Parade, Wrotham Road  
Meopham, Kent DA13 0JL**

**01474 815811 / 871555**

info@hartleyestates.com  
www.hartleyestates.com

