



Schubert Road

Putney, SW15

Asking Price £450,000

Spanning the first and second floor, this truly stunning Victorian conversion flat has been beautifully decorated, boasting almost 640 sq. ft. of living space.

CHESTERTONS



Schubert Road

Putney, SW15

- Large Reception Room
- Separate Kitchen
- Double Bedroom with En-Suite
- Additional Luxury Bathroom
- Quiet Residential Street
- Period Conversion
- Chain free



Spanning the first and second floor, this truly stunning Victorian conversion flat has been beautifully decorated, boasting almost 640 sq. ft. of living space.

Bursting with period charm this flat comprises a spacious living room with bay window and high ceilings, separate modern kitchen, and luxurious bathroom. Upstairs is the double bedroom and en-suite shower room, with built in wardrobe space.

Schubert Road is both peaceful as well as being within infinitely easy reach of East Putney Tube Station (District Line) and the many shops, cafes and bars that Putney has to offer.

Tenure: Leasehold (Expiry: 28/09/2177)

Service Charge: Ad hoc plus £788.50 p.a. for building insurance

Ground Rent: Peppercorn

Local Authority: London Borough of Wandsworth

Council Tax Band: D

Energy Efficiency Rating		Current	Potential
Very energy efficient - lower running costs	A		
(91-101)	B		
(81-90)	C	73	78
(69-80)	D		
(55-68)	E		
(39-54)	F		
(21-38)	F		
(1-20)	G		
Not energy efficient - higher running costs			

England, Scotland & Wales EU Directive 2002/91/EC

Chestertons Putney Sales

153 Upper Richmond Road

London

SW15 2TX

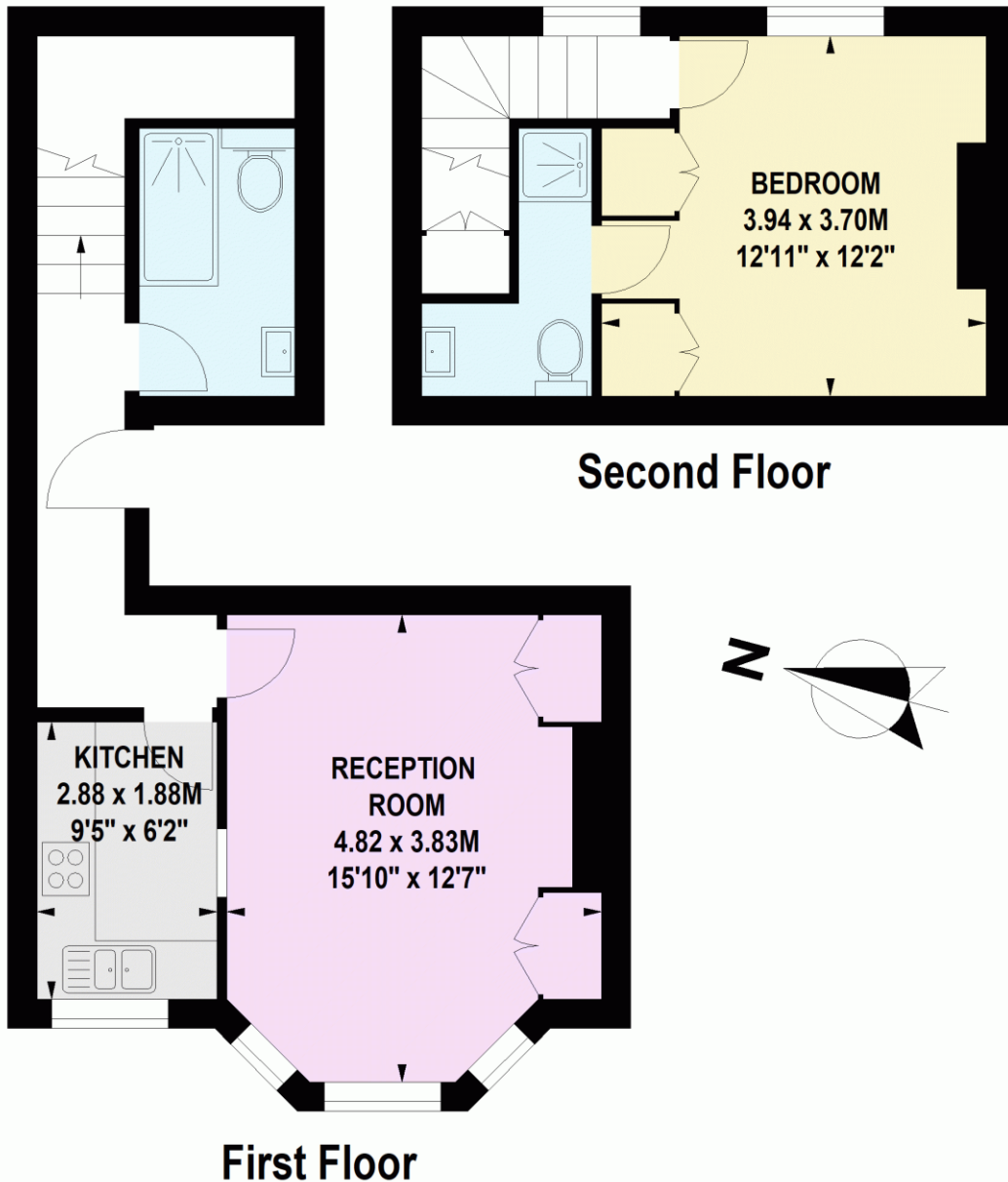
putney@chestertons.co.uk

020 8246 5959

chestertons.co.uk

Schubert Road, SW15

Approximate Gross Internal Area 58 sq m / 624 sq ft



Floor Plan produced for Chestertons by Mays Property Marketing © . Tel 020 3397 4594
Illustration for identification purposes only. Not to scale.

Orientation, measurements, and other details are approximate and for guidance only,
purchasers should verify details independently.

Where a room has a sloping ceiling the dotted line marks 1.50M height,
and all measurements shown are at floor level.