



Guide Price
£585,000

Freehold

4x  2x  2x 

**Cardigan Close, High
Halstow, Rochester,
Kent, ME3**

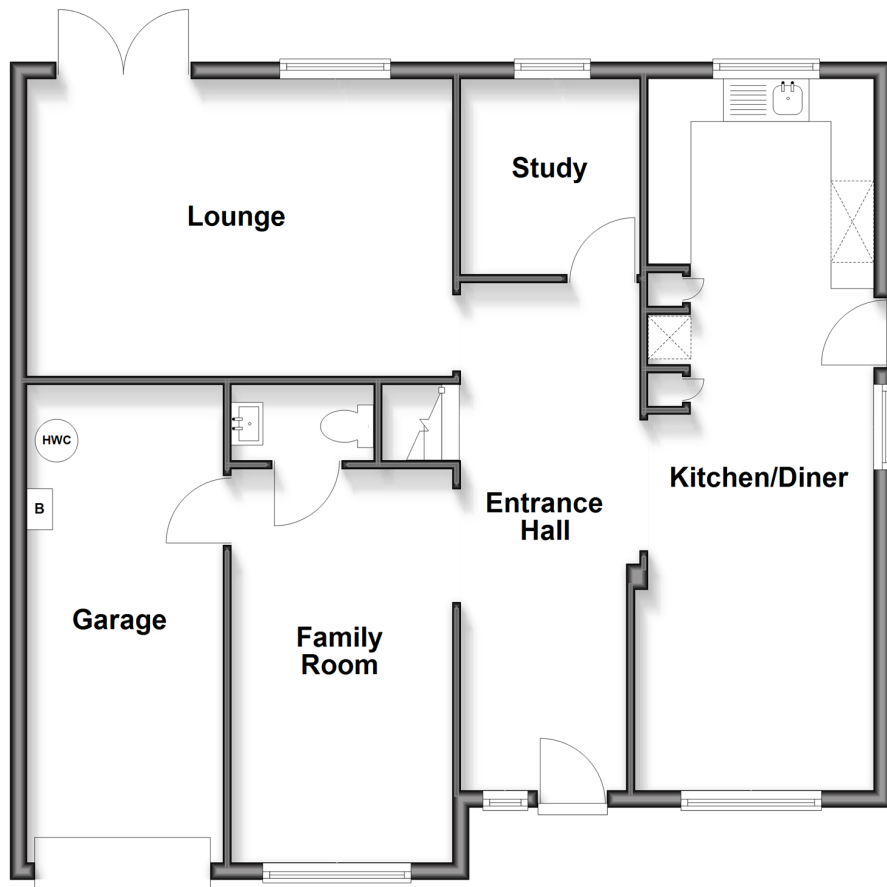
OVER 60?

Secure this property
for up to **59% less!**

Wards
Helping you move forwards

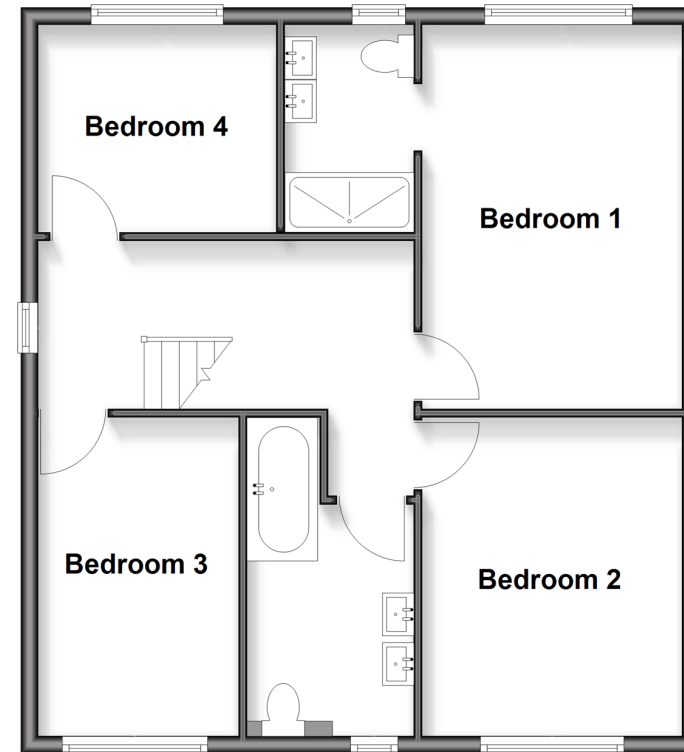
Ground Floor

Approx. 86.9 sq. metres (935.1 sq. feet)



First Floor

Approx. 62.9 sq. metres (677.1 sq. feet)



Accommodation

GROUND FLOOR

Entrance Hall
Study : 7'9 x 6'11 (2.36m x 2.11m)
Family Room: 14'10 x 8'6 (4.52m x 2.59m)
Cloakroom
Lounge : 16'6 x 11'5 (5.03m x 3.48m)
Kitchen/Diner : 27'7 x 9'3 (8.41m x 2.82m)

FIRST FLOOR

Landing
Bedroom 1 : 15'0 x 10'0 (4.58m x 3.05m)
En-Suite Shower Room : 8'4 x 4'11 (2.54m x 1.50m)
Bedroom 2 : 12'5 x 10'2 (3.79m x 3.10m)
Bedroom 3 : 12'9 x 8'1 (3.89m x 2.47m)
Bedroom 4 : 9'3 x 8'7 (2.82m x 2.62m)
Bathroom

OUTSIDE

Driveway
Integral Garage
Front Garden
Rear Garden



Main features

- Renovated to a high standard and immaculately presented
- Main bedroom with en-suite shower room
- Catchment area for the 'Outstanding' High Halstow Primary School
- Landscaped garden with sunken fire pit
- Integral garage and driveway
- Spacious and open plan kitchen/diner, perfect for family time and social get togethers



Nearest Schools

Primary Schools: High Halstow Primary, Hoo St Werburgh Primary and Marlborough Centre, Allhallows Primary
Secondary Schools: The Hundred of Hoo Comprehensive School, Chatham Grammar School for Girls



Transport Information

Train Stations: Strood 6.3 miles, Rochester 6.9 miles



Address

Cardigan Close, High Halstow, Rochester, Kent, ME3



Directions

For directions to this property please contact us.



Wards
Helping you move forwards

Call Strood Branch 01634 716597 ■ wardsofkent.co.uk



- Legal advice should be taken to verify fixtures/fittings, planning, alterations and/or lease details
- Appliances & services are untested, dimensions are approximate and floor plans are not to scale
- Through a Homewise Home For Life Plan people aged 60+ can secure this property for up to 59% less, by purchasing a Lifetime Lease



11843683/20260216/TS/CM