



Ulverscroft Road, SE22 | £1,150,000

02087028222

eastdulwich@pedderproperty.com

pedder
We live local



In General

- Three double bedrooms
- Mid-terrace period house
- Desirable, residential road
- Over 1,050 Sq Ft
- Excellent condition throughout
- Potential to extend (STPP)
- 20-ft west-facing garden

In Detail

Stunning, charming and characterful three bedroom mid-terrace family home on this desirable, tree-lined street in the heart of East Dulwich, SE22.

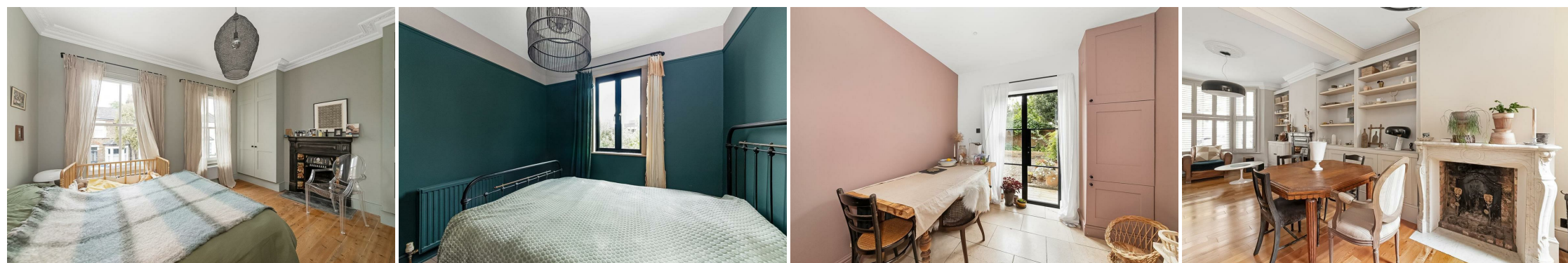
Ulverscroft Road is enviably-located for the independent shops, bars, restaurants and coffee shops of Lordship Lane and North Cross Road - as well as the gorgeous parks and green spaces nearby. There are a host of excellent primary, secondary and independent school options.

There are strong transport links into The City and West End from East Dulwich station (0.6 miles) and Peckham Rye station (1.2 miles) as well as bus/cycle routes through the neighbouring Dulwich Village, Herne Hill and Forest Hill.

Boasting over 1,050 Sq Ft of internal space which has been tastefully modernised by the current owners - there is future potential to loft-extend and side-return subject to planning permission. There is a sumptuous 25-ft bay-fronted double reception packed with original features and bespoke fitted cabinetry as well as a modern 19-ft kitchen-breakfast room that leads out onto the well-maintained 20-ft west-facing garden.

Upstairs are three comfortable bedrooms - including the 14-ft principal room with fitted wardrobes - and a luxury family bathroom.

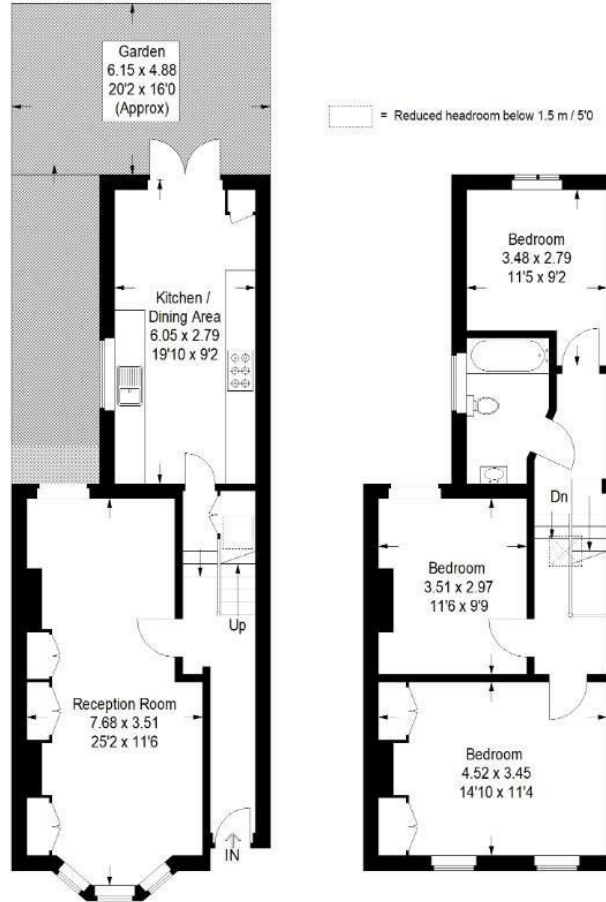
EPC: D | Council Tax Band: D



Floorplan

Ulverscroft Road, SE22

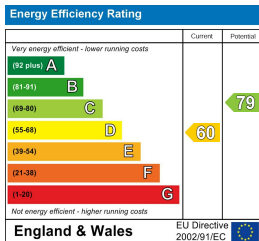
Approximate Gross Internal Area
98.4 sq m / 1069 sq ft



Ground Floor

First Floor

Copyright www.pedderproperty.com © 2026
 These plans are for representation purposes only as defined by RICS - Code of Measuring Practice. Not drawn to Scale. Windows and door openings are approximate. Please check all dimensions, shapes and compass bearings before making any decisions reliant upon them.



Pedder Property Ltd trading as Pedder for themselves and for the vendor/landlord of this property whose agents they are, give notice that (1) these particulars do not constitute any part of an offer or contract, (2) all statements contained within these particulars are made without responsibility on the part of Pedder or the vendor/landlord, (3) whilst made in good faith, none of the statements contained within these particulars are to be relied upon as a statement of representation or fact, (4) any intending purchaser/tenant must satisfy him/herself by inspection or otherwise as to the correctness of each of the statements contained within these particulars, (5) the vendor/landlord does not make or give either Pedder or any person in their employment any authority to make or give representation or warranty whatsoever in relation to this property.