



Russell Road, SW19

£599,950

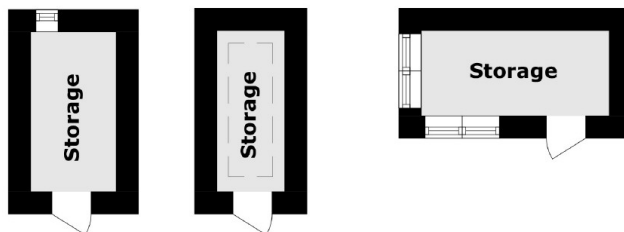
A two double bedroom, first floor purpose built maisonette, complete with its own front door and a very large, landscaped, private garden. There is potential to extend the loft to create a three bedroom, two bathroom property.

Russell Road is a quiet road with restricted traffic flow near to Wimbledon Broadway. Perfectly located for young families, being in close proximity to the superb Pelham, St Mary's & Merton Park Primary Schools. Wimbledon Village is also nearby.

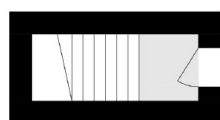
Features

- Two Double Bedrooms
- Large Private Garden
- Studio/ Garden Office
- First Floor Maisonette
- Loft Conversion Potential
- No Onward Chain

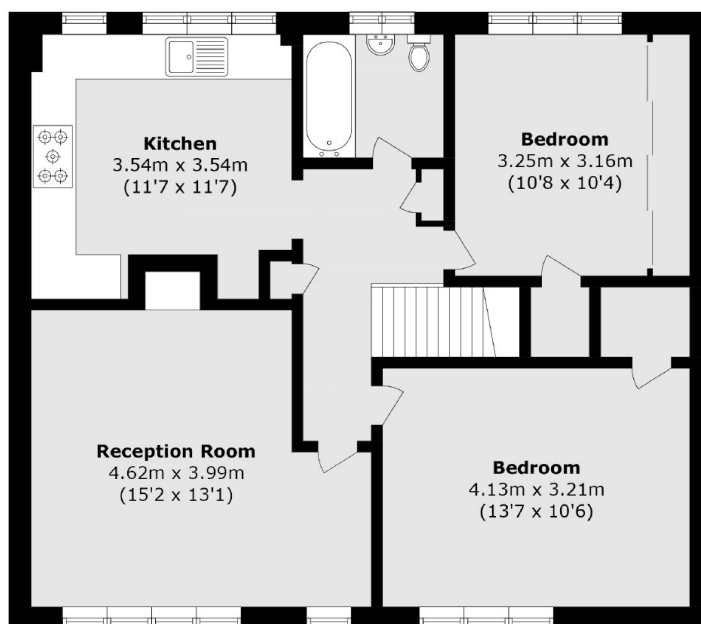
Russell Road, London, SW19



Outbuildings
(Not shown in actual location/orientation)



Ground Floor



First Floor

Total area (approx.): 70.1 sq. m (754.5 sq. ft)
Outbuildings total (approx.): 7.3 sq. m (78.5 sq. ft)