

**SW19**

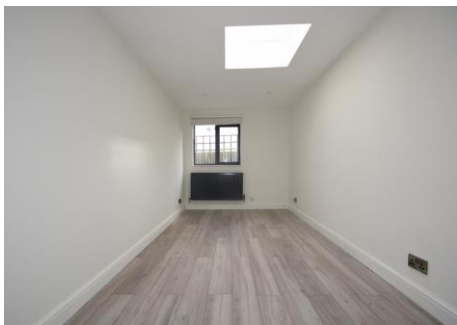
*it's all in the postcode...*



**Wolseley Avenue**  
Wimbledon Park

**Monthly Rental Of £1,750**

- One Bedroom detached home
- Wimbledon park grid
- Beautifully presented
- Available immediately
- Unfurnished
- Council tax Band B
- EPC Rating D



020 8544 2828

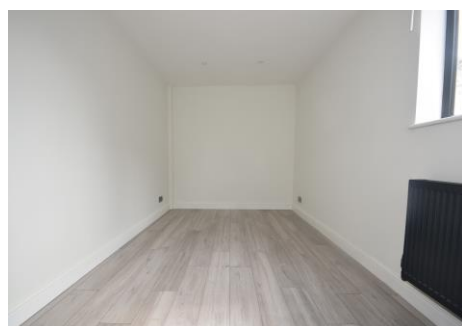
Wimbledon: Wimbledon Park: Colliers Wood

[www.SW19.com](http://www.SW19.com)

SW19 Estate Agents Ltd. Is registered in England & Wales No. 05508737

*it's all in the postcode...*

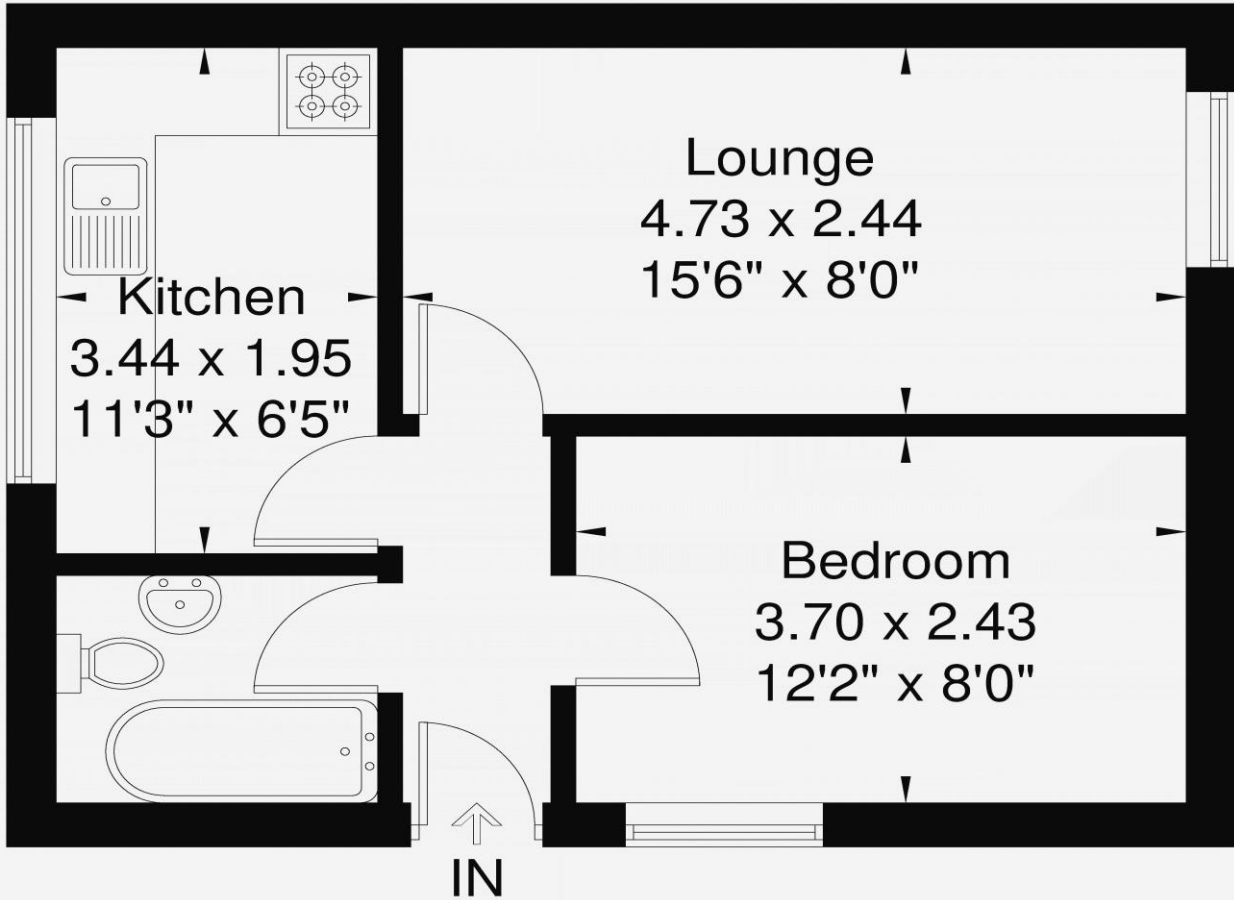
This beautifully presented one-bedroom detached contemporary home is ideally situated in the highly sought-after Grid area of Wimbledon Park. Offering stylish and modern living throughout, the property is available immediately and is offered unfurnished, providing the perfect opportunity to make it your own. Conveniently located within walking distance of Wimbledon Park District Line station, this charming home combines comfort, privacy, and excellent transport links, making it an exceptional choice for professionals or couples seeking a home in this desirable location.



---

020 8544 2828  
Wimbledon: Wimbledon Park: Colliers Wood  
[www.SW19.com](http://www.SW19.com)  
SW19 Estate Agents Ltd. Is registered in England & Wales No. 05508737

*'it's all in the postcode...'*



**35.3 sq m / 379 sq ft**

[www.epc.uk.com](http://www.epc.uk.com) [info@epc.uk.com](mailto:info@epc.uk.com)

Not to scale, for guidance only and must not be relied upon as a statement of fact, All measurements and areas are approximate only and have been prepared in accordance with the current edition of RICS code of Measuring Practice.

These particulars are for guidance only and should not be relied upon as a statement or representation of fact. All measurements given are approximate only and should not be relied upon for ordering carpets, equipment etc. Purchasers should satisfy themselves by inspection or otherwise as to the accuracy of the statements contained within. Neither SW19 estate agents ltd or related companies or their employees can confirm structural conditions of the property or that any appliances or other facilities are in working order. Purchasers are strongly recommended to arrange their own survey.

020 8544 2828  
Wimbledon: Wimbledon Park: Colliers Wood  
[www.SW19.com](http://www.SW19.com)  
SW19 Estate Agents Ltd. Is registered in England & Wales No. 05508737

*'it's all in the postcode...'*