



Station Road, offers over £145,000

- Two-bedroom mid-terraced property
- Landscaped rear garden
- Conservatory/home office space
- Council Tax Band B
- Beautifully presented throughout
- EPC Rating: C



 2  1  2



About the property

A beautifully presented and deceptively spacious two-bedroom mid-terraced home, ideally situated in the picturesque village of Nantymoel, Bridgend.

This charming property offers generous living accommodation throughout and is perfectly suited to first-time buyers, downsizers or those seeking a peaceful village lifestyle with stunning surrounding scenery.

The accommodation comprises a welcoming entrance porch leading into a bright and airy open-plan lounge/diner, providing an excellent space for both relaxing and entertaining. To the rear of the property, there is a well-equipped modern fitted kitchen, complete with a stylish breakfast island.

To the first floor, the property boasts two well-proportioned bedrooms, both benefiting from fitted wardrobes. Bedroom two is further enhanced by a light-filled conservatory, ideal for use as a home office, reading area or additional sitting space, with direct access onto the rear garden.

The property is serviced by a contemporary four-piece family bathroom, finished to a high standard.

Externally, the home features a beautifully landscaped rear garden offering a tranquil outdoor retreat, alongside a charming courtyard garden to the front.

Situated in a sought-after village location with access to local amenities, countryside walks and transport links, this property truly must be viewed to be fully appreciated.





Accommodation

Entrance Porch

Reception Room

20' 8" max x 14' 9" max (6.30m max x 4.50m max)

Kitchen

12' 2" x 7' 10" (3.71m x 2.39m)

First Floor

Landing

Bedroom One

14' 9" max x 12' 6" max (4.50m max x 3.81m max)

Bedroom Two

12' 2" x 7' 10" (3.71m x 2.39m)

Conservatory Off Bedroom Two

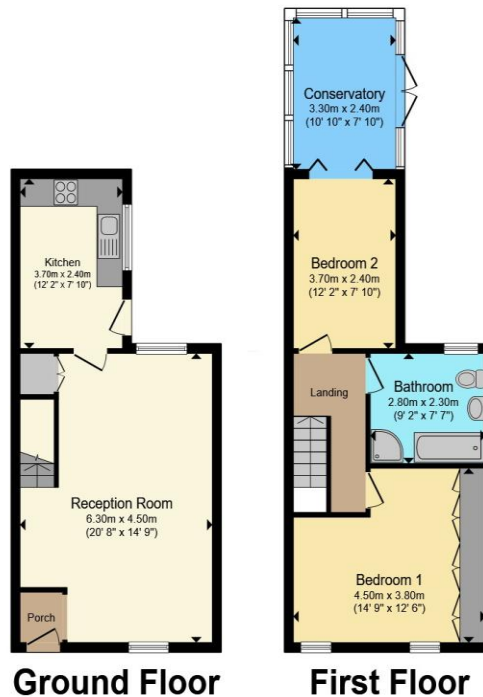
10' 10" x 7' 10" (3.30m x 2.39m)

Bathroom

01656 657201

bridgend@peteralan.co.uk

Floorplan



Total floor area 83.3 m² (897 sq.ft.) approx

This floor plan is for illustrative purposes only. It is not drawn to scale. Any measurements, floor areas (including any total floor area), openings and orientation are approximate. No details are guaranteed, they cannot be relied upon for any purpose and they do not form part of any agreement. No liability is taken for any error, omission or misstatement. A party must rely upon its own inspection(s). Powered by www.propertybox.io

Important Information

Note while we endeavour to make our sales details accurate and reliable, if there is any point which is of particular interest to you, please contact the office and we will be pleased to confirm the position for you. We have not personally tested any apparatus, equipment, fixtures, fittings or services and cannot verify they are in working order or fit for their purposes. Nothing in these particulars is intended to indicate that carpets or curtains, furnishings or fittings, electrical goods (whether wired or not). Gas fires or light fittings or any other fixtures not expressly included form part of the property offered for sale. This computer generated Floorplan, if applicable, is intended as a general guide to the layout and design of the property. It is not to scale and should not be relied upon for dimensions. Tenure: We cannot confirm the tenure of the property as we have not had access to the legal documents. The buyer is advised to obtain verification from their solicitor or surveyor.

Peter Alan Limited is registered in England and Wales under company number 2073153, Registered Office is Cumbria House, 16-20 Hockliffe Street, Leighton Buzzard, Bedfordshire, LU7 1GN. VAT Registration Number is 500 2481 05. For activities relating to regulated mortgages and non-investment insurance contracts, Peter Alan Limited is an appointed representative of Connells Limited which is authorised and regulated by the Financial Conduct Authority. Connells Limited's Financial Services Register number is 302221. Most buy-to-let