



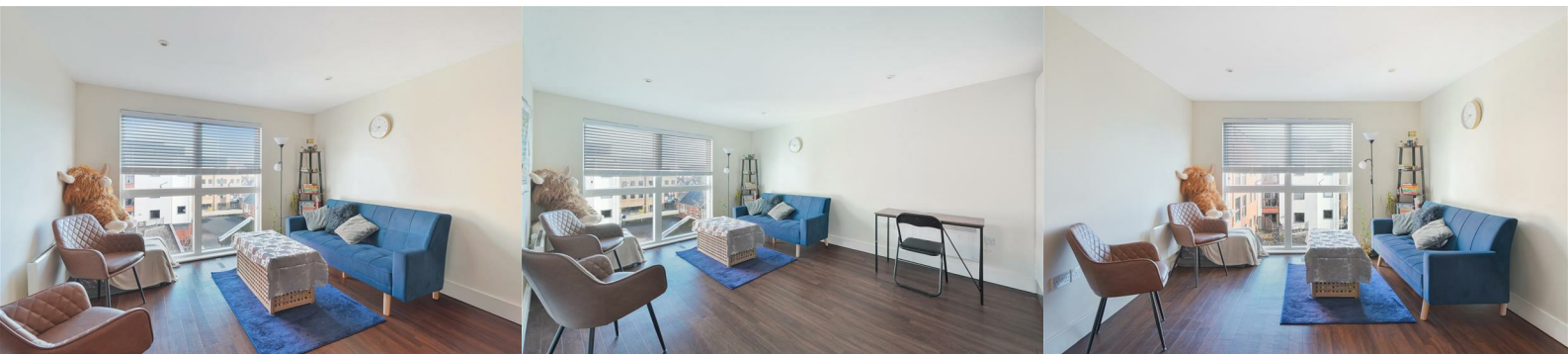
## 116 Capitol Square

Church Street, Epsom, KT17 4NR

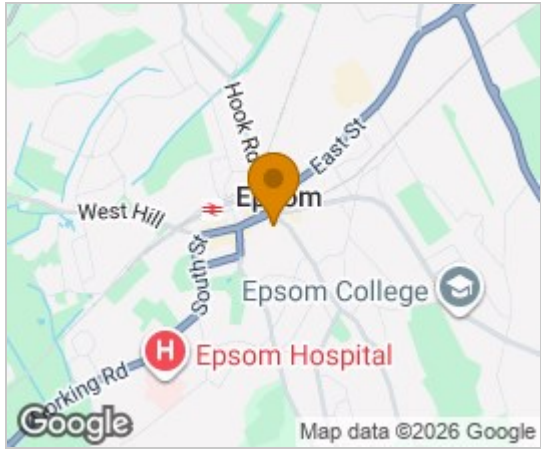
**£1,350 Per Calendar Month**



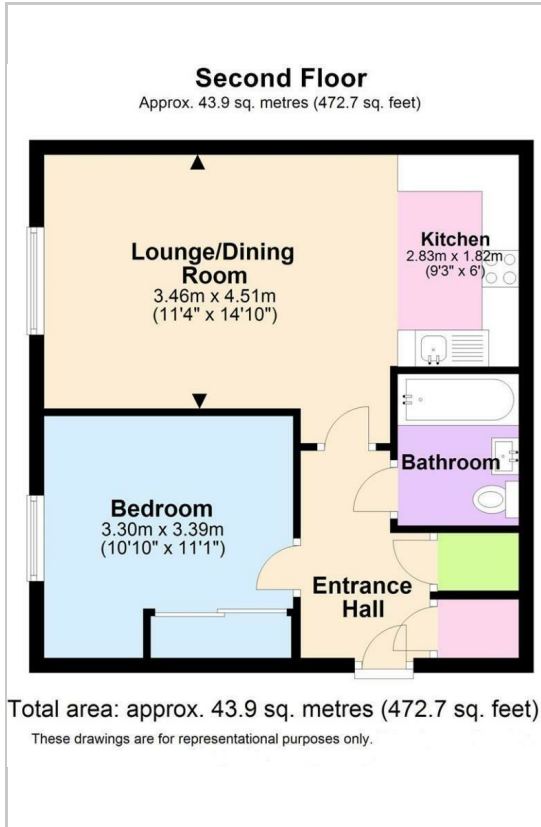
Thomas & May is delighted to offer this recently decorated modern one bedroom apartment in the sought after Capitol Square development located in the centre of Epsom, close to shops, amenities and mainline station. No Parking.



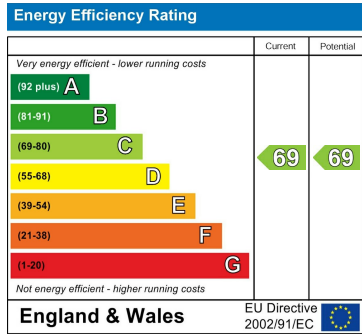
## Area Map



## Floor Plans



## Energy Efficiency Graph



These particulars, whilst believed to be accurate are set out as a general outline only for guidance and do not constitute any part of an offer or contract. Intending purchasers should not rely on them as statements of representation of fact, but must satisfy themselves by inspection or otherwise as to their accuracy. No person in this firm's employment has the authority to make or give any representation or warranty in respect of the property.