



Old Vicarage | Soulby | Kirkby Stephen | CA17 4PL

Guide Price £875,000



david britton
ESTATES



Key Features

- Stunning Period Home in popular village
- Sitting in around 1 acre plot
- 6 bedrooms arranged over 3 floors
- Immaculately presented throughout
- Retaining original features and character
- Further development potential on second floor STP
- Stone outbuildings, garage and ample parking
- Close to Kirkby Stephen, Appleby
- On the edge of Yorkshire Dales National Park
- Standalone position

Summary

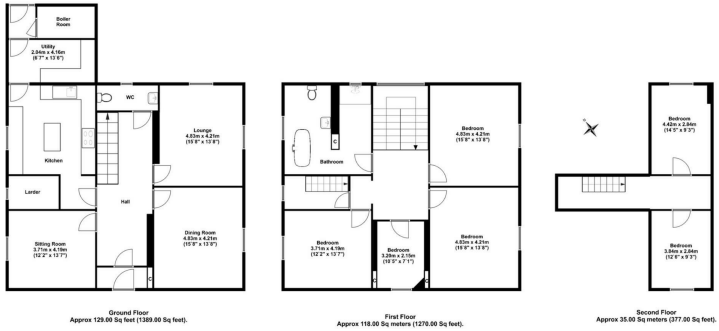
ELEVATED 6 BEDROOM VICARAGE WITH AN ACRE OF GROUNDS ON THE EDGE OF DESIRABLE VILLAGE!

This magnificent and imposing period residence is a home filled with grandeur and charming original features, all sitting within a private plot of around 1 acre. Extensively renovated in 2013 and offering around 2700 sq ft of accommodation, this impressive and imposing 6 bedroom family home has a sweeping private driveway and sits in a standalone position on the edge of the desirable village of Soulby and enjoys superb countryside and far reaching fell views towards the Yorkshire Dales National Park.





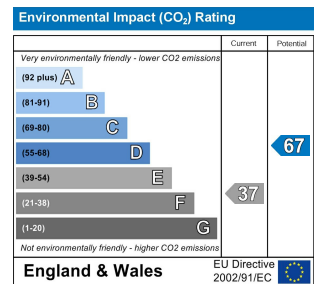
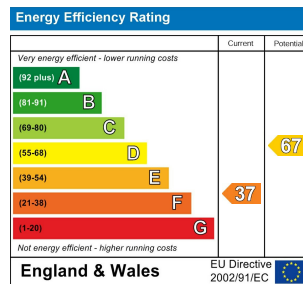
Floor plans



COUNCIL TAX BAND - Westmorland & FurnessE

DISCLAIMER

These particulars, whilst believed to be accurate are set out as a general guideline and do not constitute any part of an offer or contract. Intending Purchasers should not rely on them as statements of representation of fact but must satisfy themselves by inspection or otherwise as to their accuracy. The services, systems, and appliances shown may not have been tested and has no guarantee as to their operability or efficiency can be given. All floor plans are created as a guide to the lay out of the property and should not be considered as a true depiction of any property and constitutes no part of a legal contract.



Unit 3 Mason Court Gillan Way, Penrith 40 Business Park

Penrith

Cumbria

CA11 9GR

01768881111

Sales@brittonestates.co.uk

www.brittonestates.co.uk