

*Symonds
Taylor*



27 Bemersyde Drive, Jesmond

Newcastle Upon Tyne

Offers Over **£995,000**



27 Bemersyde Drive

Jesmond, Newcastle Upon Tyne

This detached family home with 3 floors of accommodation offers versatile and spacious accommodation that sits in its own grounds in the heart of Jesmond and that will have a good regional and national appeal.

Accommodation comprises:

Ground floor: Entrance vestibule, hallway, cloakroom/wc, sitting room, family room, dining kitchen, utility room.

First floor: Principal bedroom, dressing room, bedroom 2, bedroom 3, family bathroom.

Second floor: Bedroom 4, ensuite shower room.

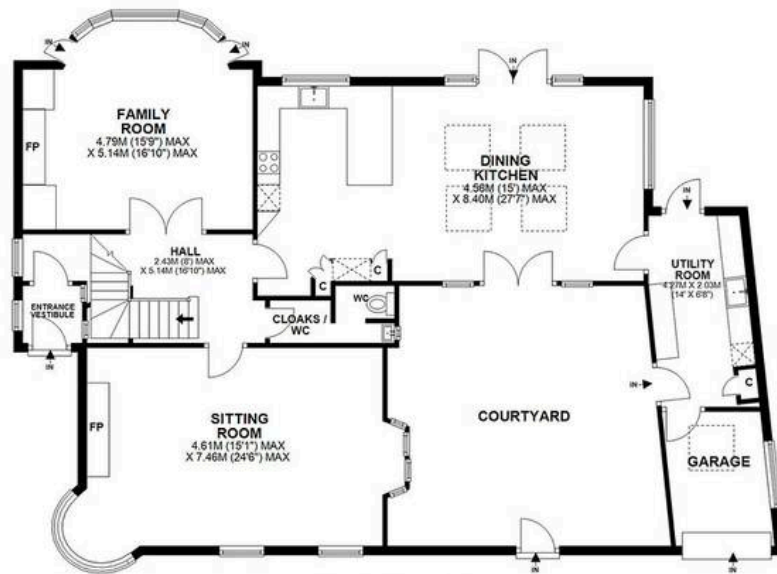
Outside: Front town garden, double driveway, off street parking, secure courtyard, rear garden, large paved patio, raised timber beck, Timber shed/summerhouse.

Situation:

Bemersyde Drive is a highly sought after street in the heart of Jesmond. Ideal for families there is access to all that this bustling suburb has to offer including a range of local and national shops, public houses, bar, restaurants and coffee shops. There are also a number of sports clubs and swimming pool on hand as well as schooling for all ages including access to a number of private schools.

With good Metro and bus links directly in to Newcastle city centre which is excellent for commuting and there is direct access to Newcastle Central Station that links to London Kings Cross in less than 3 hours. To the north of the city, also accessed by Metro is Newcastle International Airport





GROUND FLOOR



FIRST FLOOR



SECOND FLOOR

27 BEMERSYDE DRIVE, JESMOND, NE2 2HL

APPROXIMATE GROSS INTERNAL AREA 224 SQ M 2409 SQ FT - NOT TO SCALE - FOR ILLUSTRATIVE PURPOSES ONLY





Newcastle

101 St. Georges Terrace, Jesmond - NE2 2DN

0191 338 9999 • hello@symondstaylor.co.uk • www.symondstaylor.co.uk

All descriptions, plans or references to condition are given in good faith only. Whilst every endeavour is made to ensure accuracy, please check with us on any points of especial importance to you.