



# PM ESTATES

Property Sales & Lettings



**St Stephens Court**  
Silver Street, Stansted, CM24 8GA

**£1,600<sub>PCM</sub>**

[www.pm-estates.co.uk](http://www.pm-estates.co.uk)

# St Stephens Court

Silver Street, Stansted, CM24 8GA

## Overview

- First Floor Apartment
- Recently Renovated
- Two Double Bedrooms
- Open-Plan Living Area
- Fitted Kitchen with Appliances
- Family Sized Tiled Bathroom
- En-Suite Shower Room
- Private Balcony Area
- Popular Development
- Close to Local Amenities
- Allocated Secure Parking Space
- Energy Rating B
- Council Tax Band C



## Description

PM Estates are pleased to introduce this modern first floor apartment to the rental market, within the popular St Stephens Court Development within the idyllic village of Stansted Mountfitchet

This recently renovated apartment has a large open-plan living area which features an island styled newly fitted kitchen with integrated appliances. The living space is further enhanced by the benefit of a private balcony, complete with a light oak wooden styled decking. The property itself comprises of two double bedrooms, a family sized bathroom and en-suite adjacent to the master bedroom.

The St Stephens Court development is renowned for its quality of finish and convenient 7-minute walk away from the mainline rail station which is just 0.4 miles from the development. The rail station itself offers direct service into London Liverpool Street and Stansted Airport, lending itself to city and airport workers alike.

In addition, the highly regarded Linden House bar and guest house is located just opposite from St Stephens Court with various local amenities in close proximity on Silver Street itself with Tesco express and Churchill's fish and chips shop less than a minutes' walk away.

St Stephens Court is a popular residential development and located a five-minute walk from the mainline rail station which offers direct services to London Liverpool Street, Cambridge, and Stansted Airport, making this an ideal for commuters and airport staff.

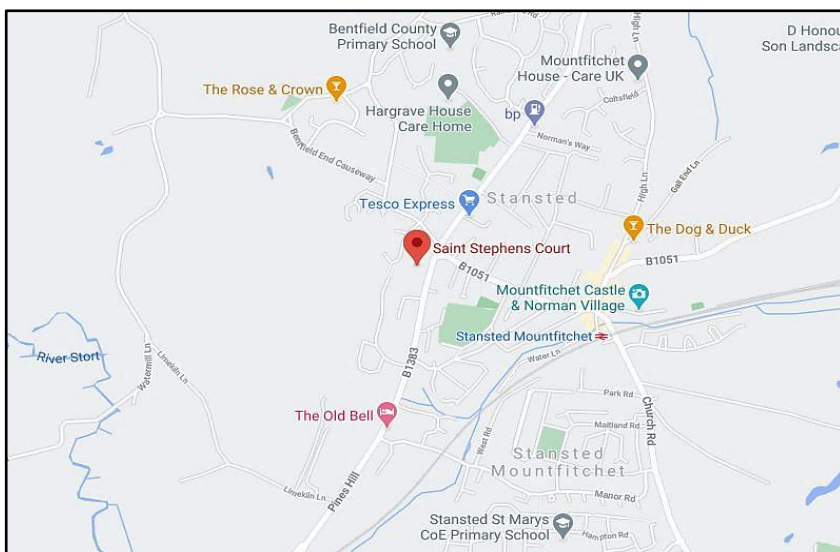
To schedule a viewing or for more information, please contact PM Estates today.



Score	Energy rating	Current	Potential
92+	A		
81-91	B	82 B	82 B
69-80	C		
55-68	D		
39-54	E		
21-38	F		
1-20	G		

Stansted Mountfitchet is a historic village that dates back to the Roman era. It is recognized by its large windmill, which can be seen throughout Stansted and was constructed in 1878. Most famously known for London's Stansted Airport, which is one stop away on the train, or just a 10-minute bus journey. Despite the close proximity to the airport, Stansted is one of the only places within the surrounding area that has no flight paths, enhancing its quiet and picturesque village atmosphere.

The village has grown larger in size over recent years and is becoming an ever-popular location for families and commuters alike, as its fantastic transport links are complemented by its quaint shops and boutiques. The appeal is enhanced as Stansted is only 3 miles from the market town of Bishops Stortford which offers a large indoor shopping centre, many restaurants and bars and a weekly market within its high street, encapsulation and promoting the areas historical roots.

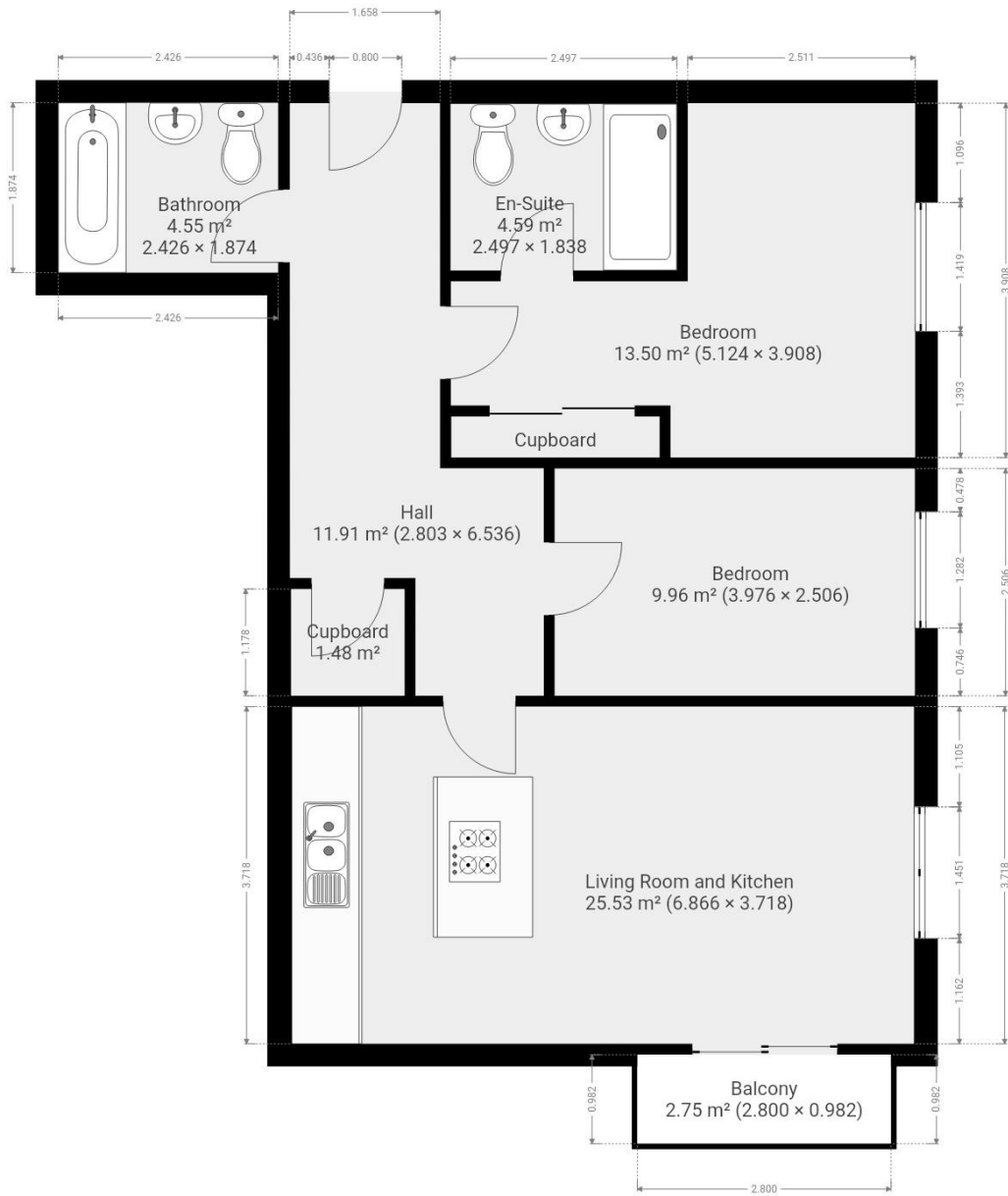


## Directions

From our office:

- Turn right on Adderley Road (A1059)
- At the traffic lights, turn right onto the causeway (A1250).
- At the roundabout, take the first exit to continue straight on Hockerill Street.
- At Hockerill Street traffic lights, turn left on to Stansted Road (B1383) continue straight for 1.3 miles.
- At the roundabout, take the second exit to continue Stansted Road for 1.4 miles.
- The St Stephens Court Development will be on your left along Silver Street.

# Floor Plan



7 Riverside Walk, South Street, Bishop's Stortford, Herts CM23 3AG

Tel: 01279 654646

Email: [info@pm-estates.co.uk](mailto:info@pm-estates.co.uk)

[www.pm-estates.co.uk](http://www.pm-estates.co.uk)

PM Estates wish to advise prospective purchasers that we have not checked the services or appliances. The sales particulars have been prepared as a guide only; any floor-plan or map is for illustrative purposes only. PM Estates, for themselves and for the vendors or lessors of this property whose agents they are give notice that: the particulars have been produced in good faith; do not constitute any part of a contract; no person in the employment of PM Estates has any authority to make or give any representation of warranty in relation to this property.

P820