



Interchange, Coventry Road, Sheldon, Birmingham

burchell
edwards



Property Description

This well-presented third floor one-bedroom apartment is situated within the popular development Interchange on Coventry Road, offering convenient access to local amenities and excellent transport links.

The property features a spacious open-plan living and kitchen area, providing a bright and practical space ideal for modern living. The kitchen is well laid out with ample storage and worktop space, making it suitable for both everyday use and entertaining.

The double bedroom is generously sized and benefits from plenty of natural light, while the apartment is completed by a contemporary bathroom fitted with a white suite.

Located within close proximity to shops, public transport routes, and major road links, the apartment is well positioned for easy commuting into Birmingham City Centre and surrounding areas.

This property would make an ideal first-time purchase or buy-to-let investment, offering low-maintenance living in a convenient location.

Early viewing is highly recommended.

Entrance Hallway

All doors off.

Kitchen/ Lounge

Double glazed window to rear elevation, a range of wall and base units with work surface over incorporating a sink with drainer unit, electric hob and oven, electric radiator, laminate flooring.

Bedroom

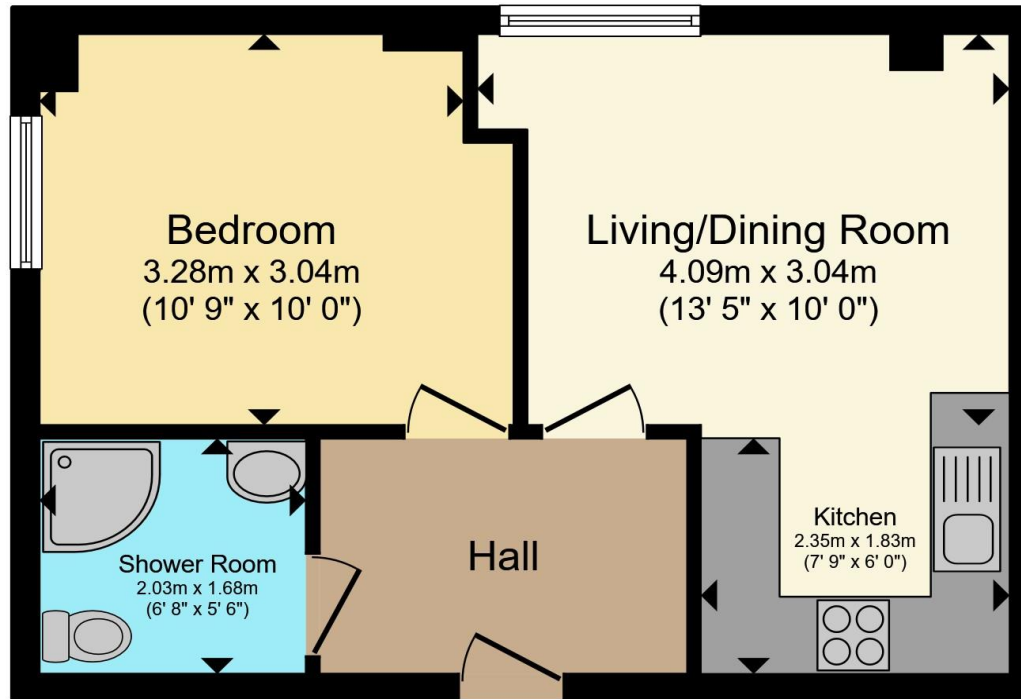
Double glazed window to rear elevation, electric radiator and laminate flooring.

Bathroom

Electric walk in shower, W.C, wash hand basin, electric radiator, extractor, tiling to walls and tiled flooring.







Total floor area 36.7 m² (395 sq.ft.) approx

This floor plan is for illustrative purposes only. It is not drawn to scale. Any measurements, floor areas (including any total floor area), openings and orientation are approximate. No details are guaranteed, they cannot be relied upon for any purpose and they do not form part of any agreement. No liability is taken for any error, omission or misstatement. A party must rely upon its own inspection(s). Powered by www.propertybox.io



To view this property please contact Burchell Edwards on

T 0121 742 1725
E sheldon@burchelledwards.co.uk

2208 Coventry Road Sheldon
 BIRMINGHAM B26 3JH

EPC Rating: D Council Tax
 Band: A

Service Charge: 200.00 Ground Rent:
 250.00

Tenure: Leasehold

view this property online burchelledwards.co.uk/Property/SHL211658

This is a Leasehold property with details as follows; Term of Lease 200 years from 01 Jan 2019. Should you require further information please contact the branch. Please Note additional fees could be incurred for items such as Leasehold packs.



1. MONEY LAUNDERING REGULATIONS Intending purchasers will be asked to produce identification documentation at a later stage and we would ask for your co-operation in order that there will be no delay in agreeing the sale. 2. These particulars do not constitute part or all of an offer or contract. 3. The measurements indicated are supplied for guidance only and as such must be considered incorrect. Potential buyers are advised to recheck measurements before committing to any expense. 4. We have not tested any apparatus, equipment, fixtures, fittings or services and it is in the buyers interest to check the working condition of any appliances.

Burchell Edwards is a trading name of Connells Residential which is registered in England and Wales under company number 1489613, Registered Office is Cumbria House, 16-20 Hockliffe Street, Leighton Buzzard, Bedfordshire, LU7 1GN. VAT Registration Number is 500 2481 05.

See all our properties at www.burchelledwards.co.uk | www.rightmove.co.uk | www.zoopla.co.uk

Property Ref: SHL211658 - 0002