



Roland Gardens  
South Kensington, SW7

CHESTERTONS





A lovely one bedroom apartment in this period building on Roland Gardens. The flat consist of a good sized living room as well as a separate kitchen, double bedroom and bathroom. the Property will be ideal for a single or a couple.

- Reception
- Kitchen
- Bedroom
- Bathroom

**£2,250 pcm**

Additional tenant charges apply (fees apply to non-AST tenancies only)

Tenancy Agreement Fee: £300

References per Tenant/Guarantor: £60

Inventory check (approx. £100 – £250 inc. VAT)

[chestertons.co.uk/property-to-rent/applicable-fees](http://chestertons.co.uk/property-to-rent/applicable-fees)

Energy Efficiency Rating		Current	Potential
100-109	A		
81-100	B		
62-81	C		
43-61	D	66	77
25-42	E		
10-24	F		
1-9	G		

Not energy efficient - higher running costs

EU Directive 2002/91/EC  
England, Scotland & Wales

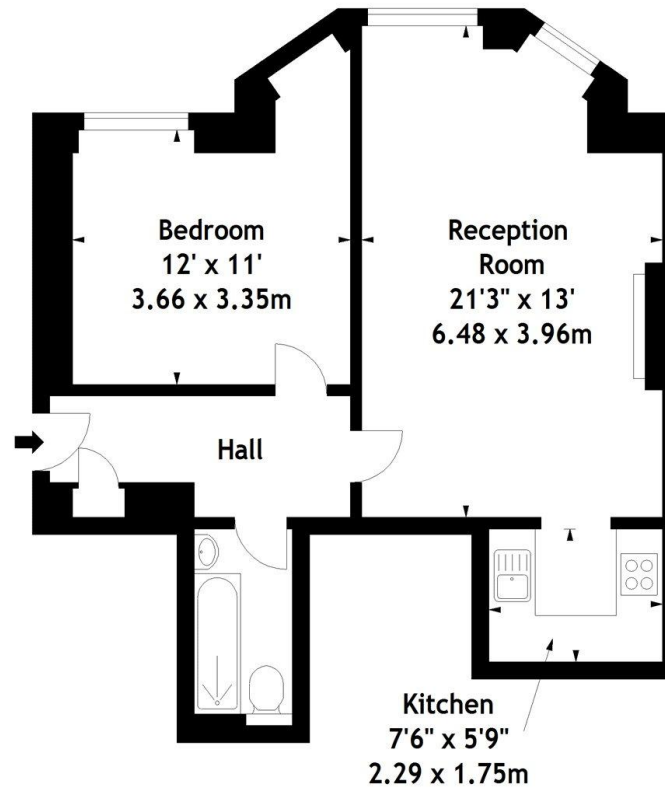
**Minimum Term:** 6 months  
**Deposit Required:** £2,596.15  
**Local Authority:** Royal Borough of Kensington & Chelsea  
**Council Tax Band:** E  
**EPC Rating:** D  
**Furnished**

*Chestertons South Kensington Lettings*

44-48 Old Brompton Road  
 South Kensington  
 London  
 SW7 3DY

[southkensingtonlettingsusers@chestertons.co.uk](mailto:southkensingtonlettingsusers@chestertons.co.uk)  
 02075891244

Roland Gardens, SW7  
Approx. Gross Internal Area  
561 Sq Ft - 52.12 Sq M



### Lower Ground Floor

Measured in accordance with RICS guidelines. Every attempt is made to ensure accuracy, however all measurements are approximate. This floor plan is for illustrative purposes only and is not to scale.

© Datography Ltd 2015  
Photographs \* Floorplans \* Virtual Tours  
Tel: 0845 643 4401 [www.datography.com](http://www.datography.com)

