



8 Holcroft  
Orton Malborne PE2 5SL  
£950 Per month



## 8 Holcroft

### Orton Malborne PE2 5SL

This home briefly comprises front porch leading into the entrance hallway, newly fitted kitchen, spacious living dining room which has double doors opening into the rear garden. To the first floor there are two double bedrooms and a family bathroom.

To the front there is allocated parking and private gated access through the front garden which is of a low maintenance nature with a shrub border leading to the front door.

The rear garden is enclosed by timber fencing and again is of a low maintenance nature with artificial lawn and a large patio seating area where you can relax in the summer sun with a glass of wine.





Front Porch:

Entrance Hallway:

Kitchen:  
(8'8" x 7'6" max)

Living Dining Room:  
(14'3" x 14'4" max)

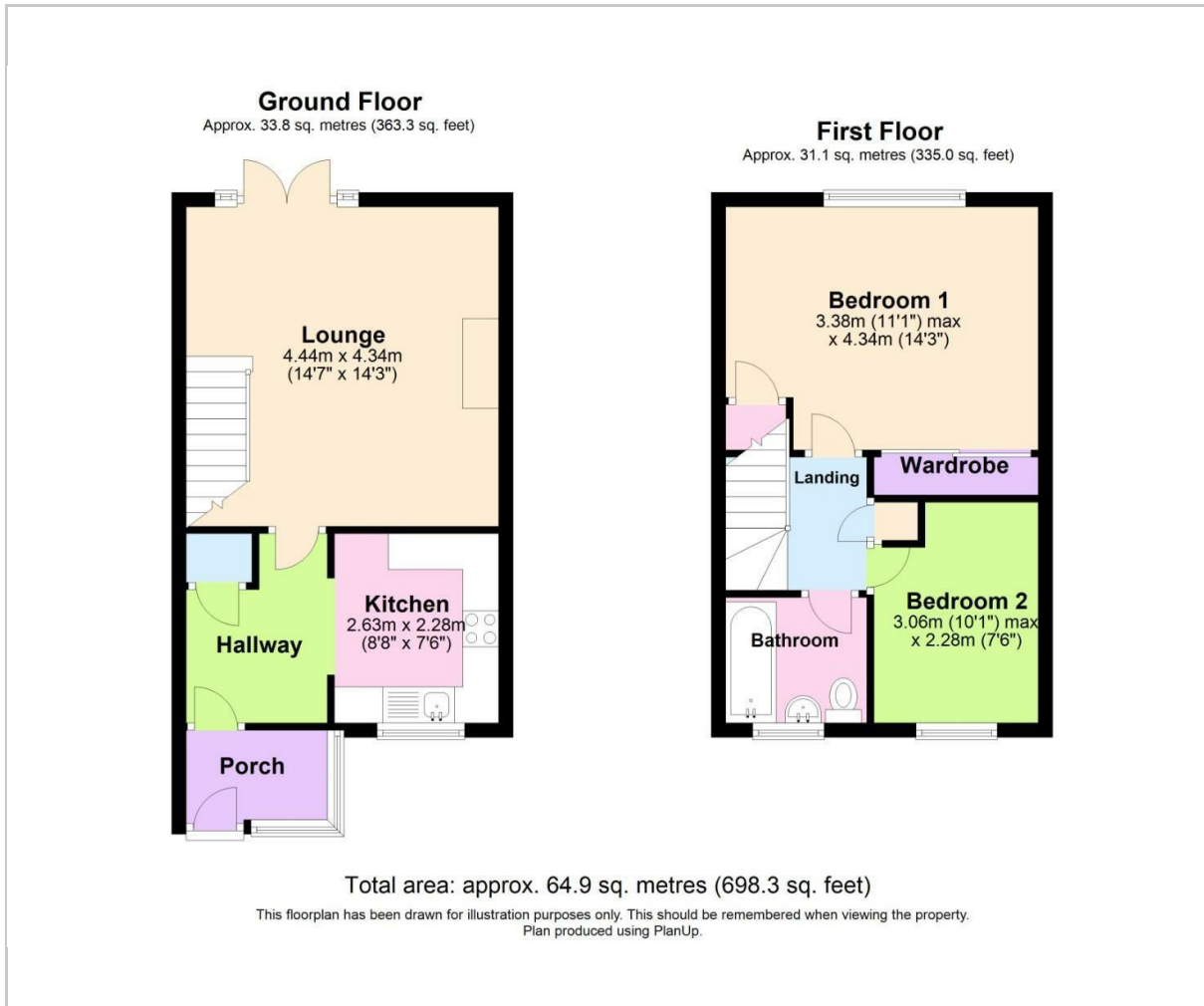
Landing:

Bedroom One:  
(11'1" x 13'9" max)

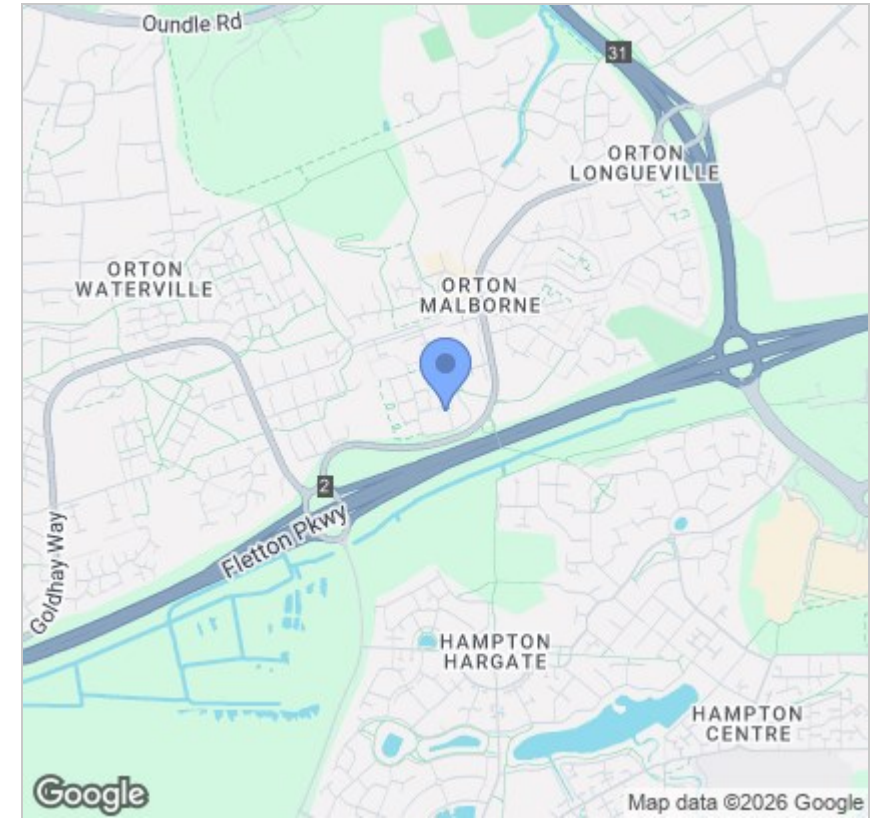
Bedroom Two:  
(11'4" x 7'5" max)

Bathroom:

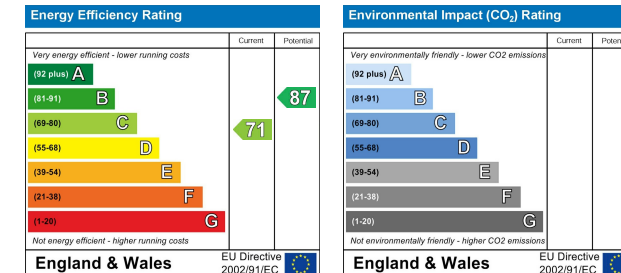
## Floor Plan



## Area Map



## Energy Efficiency Graph



## Viewing

Please contact our Lettings Office on 01733 973673 if you wish to arrange a viewing appointment for this property or require further information.

These particulars, whilst believed to be accurate are set out as a general outline only for guidance and do not constitute any part of an offer or contract. Intending purchasers should not rely on them as statements of representation of fact, but must satisfy themselves by inspection or otherwise as to their accuracy. No person in this firm's employment has the authority to make or give any representation or warranty in respect of the property.



381 Eastfield Road,  
Peterborough, PE1 4RA  
T: 01733 973673  
E: lettings@firminandco.co.uk