



## Fairmont Avenue, E14

£600 Per week

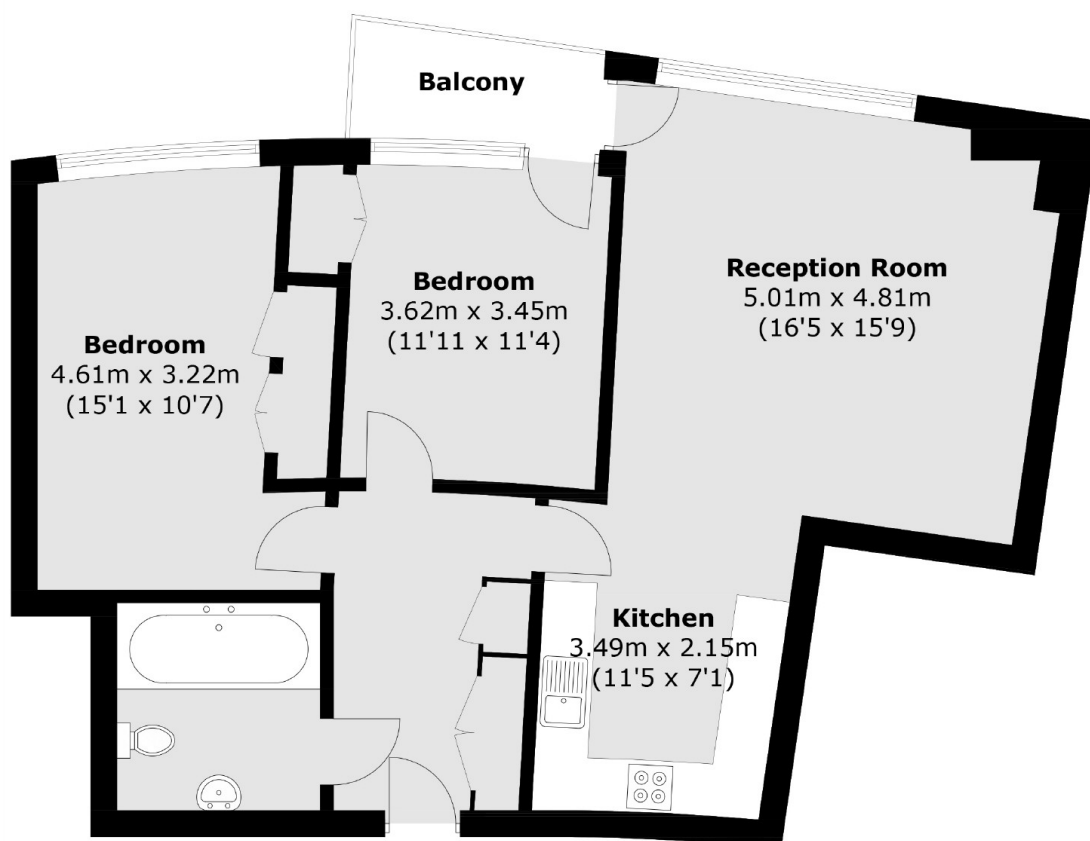
A modern two-bedroom apartment on a high floor of this development, comprising floor-to-ceiling windows, wooden flooring, and access to an on-site swimming pool and gym.

New Providence Wharf is moments from the shops, bars, and restaurants of Canary Wharf.

### Features

- Two Bedrooms
- One Bathroom
- High Floor Position
- Private Balcony
- Wooden Flooring
- Concierge, Pool & Gym

# Fairmont Avenue, London, E14



## Thirteenth Floor

Total area (approx.): 74.4 sq. m (800.8 sq. ft)  
Balcony Area (approx.): 3.4 sq. m (36.5 sq. ft)