

Blagrove Road, TW11

£754,999

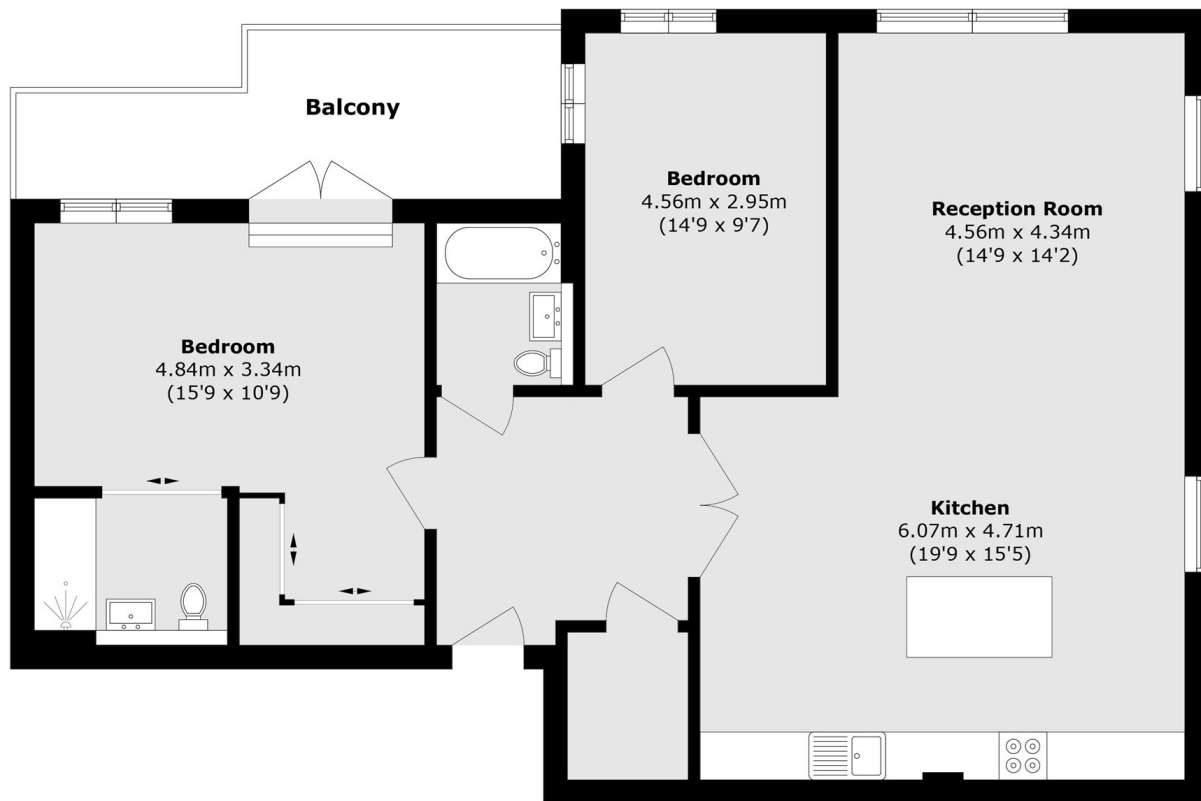
Situated in this highly sought-after development this immaculately presented apartment offers 1153 sq ft of living space and is one of the largest apartments in the development. There are two double bedrooms and two bathrooms with a lovely large balcony opposite Royal Bushy Park.

Located on Blagrove Road in Teddington with Bushy Park on your doorstep and a short walk to Kingston's shops, the property is located excellently for all amenities.

Features

- Two Double Bedrooms
- Two Bathrooms
- Sought-After Location
- Allocated Parking
- Private Balcony
- Solar Panel

Blagrove Road, Teddington, TW11



Total area (approx.): 107.2 sq. m (1153.9 sq. ft)

Balcony area (approx.): 12.2 sq. m (131.3 sq. ft)