



## **METROPOLITAN CRESCENT, SW4**

**£975,000**

Stylish 2-bedroom, 2-bathroom apartment set within a secure gated development in the sought-after Clapham Conservation Area. Featuring a bright open-plan living and dining space, two spacious bedrooms, excellent storage, bike storage and communal gardens.

- Private Terrace
- Secure Gated Development
- Walking Distance to Clapham
- Bicycle storage
- Historical development

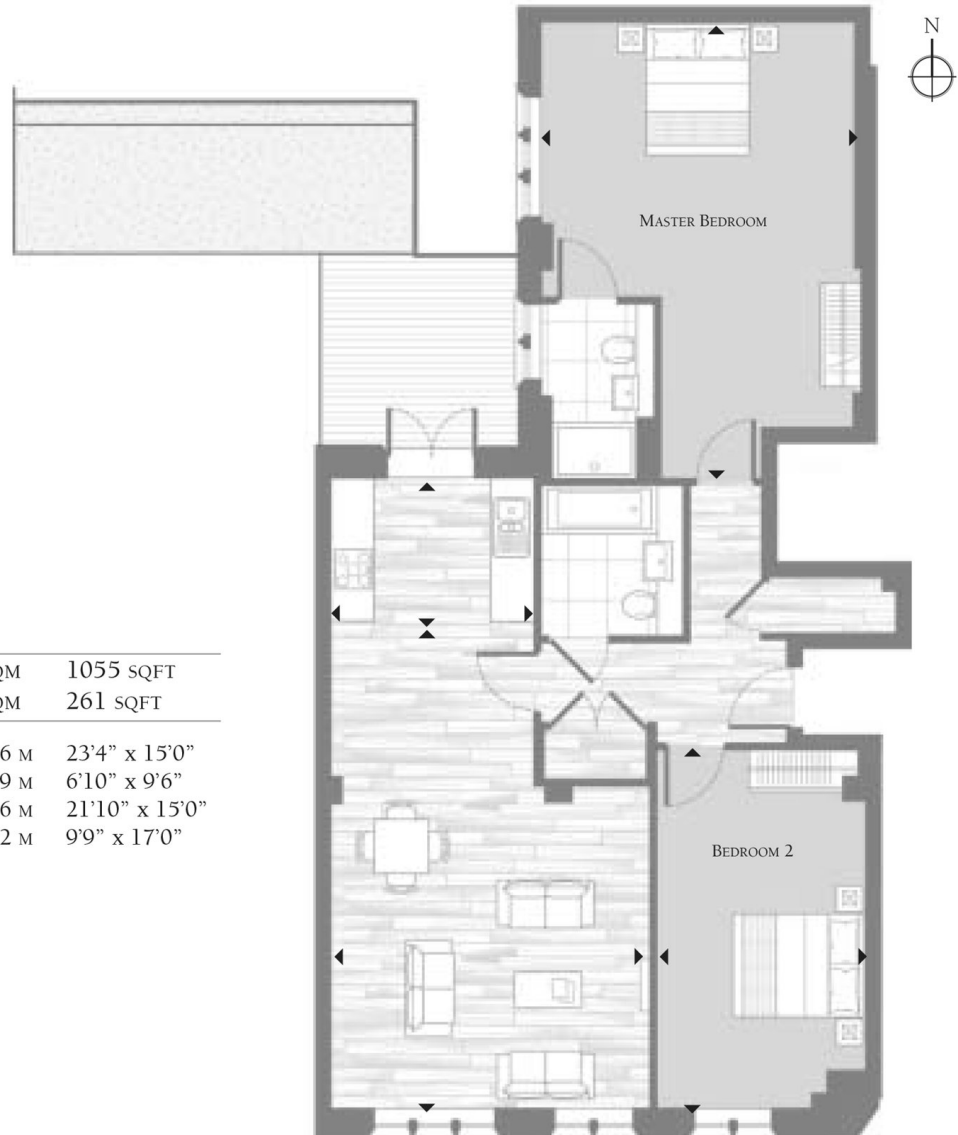


## ABOUT THE HOME

Ideally located just a 5-minute walk to Clapham Common Station.







INTERNAL AREA	98.0 SQM	1055 SQFT
EXTERNAL AREA	24.3 SQM	261 SQFT
LIVING/DINING	7.1 x 4.6 M	23'4" x 15'0"
KITCHEN AREA	2.1 x 2.9 M	6'10" x 9'6"
MASTER BEDROOM	6.7 x 4.6 M	21'10" x 15'0"
BEDROOM 2	3.0 x 5.2 M	9'9" x 17'0"

**LiFE RESIDENTIAL**

11 Flagstaff House, London,  
SW8 2LZ

Sales: 020 7476 1408

Lettings: 020 7582 7989

Energy Rating: . We aim to make our particulars both accurate and reliable. However they are not guaranteed; nor do they form part of an offer or contract. If you require clarification on any points then please contact us, especially if you're traveling some distance to view. Please note that appliances and heating systems have not been tested and therefore no warranties can be given as to their good working order.