



National
Trust

London & South East

To let

East Park Farmhouse, East Park Lane
Staplefield, RH17 6DG
£2400.00 per calendar month



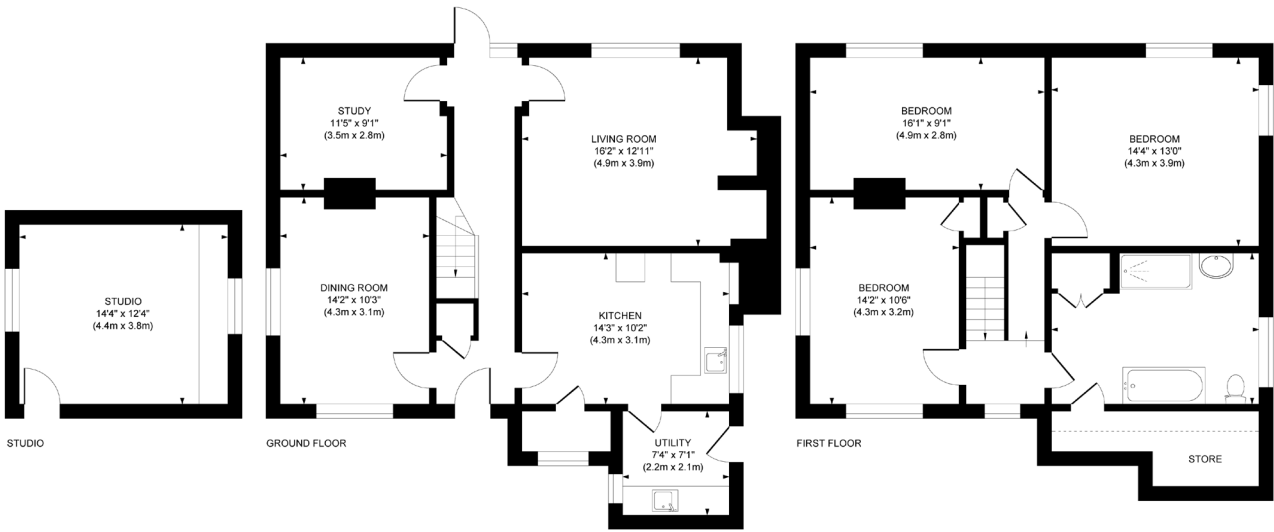
East Park Farmhouse is the National Trust's stunning 3 Bedroom detached cottage forming part of the Nymans portfolio. The house has had a complete transformation with a modern kitchen, modern bathroom, stunning living spaces and spacious garden.

For all viewings please contact Lilly-May Knight on:

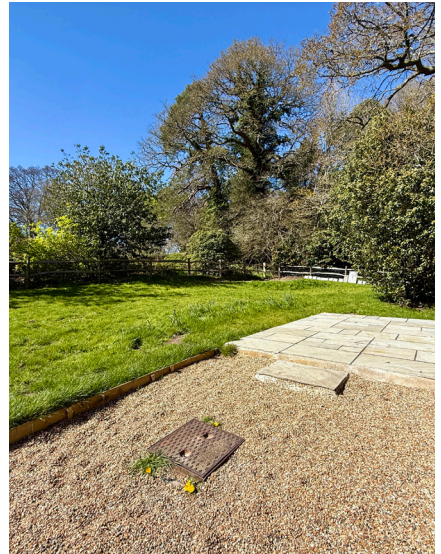
Lilly.Knight@nationaltrust.org.uk



Approximate Gross Internal Area
Main House 1625 sq. ft. / 150.94 sq. m
Studio 176 sq. ft. / 16.39 sq. m
Total 1801 sq. ft. / 167.33 sq. m



This plan is for layout guidance only. Not drawn to scale unless stated. Whilst every care is taken in the preparation of this plan, please check all dimensions, shapes and compass bearings before making decisions reliant upon them.



The Location

East Park Farmhouse is located in the charming small village of Staplefield next to The National Trust's Nymans House and Gardens.

Nymans Gardens is a stunning Grade I Listed garden known for its romantic ruins, vibrant seasonal planting and its breathtaking views over the Sussex Weald. East Park Farmhouse in the heart of historic farmland and has great access to the M23 for trips to London, Brighton and Gatwick.

East Park Farmhouse approximately 7 miles from Haywards Heath, 17 miles from Brighton and 11 miles from Gatwick Airport.



Directions

From London:

Head south along the A23 from Central London and merge on to the M23 southbound. Take exit 11 following signs for Pease Pottage and the brown tourist sign for Nymans Garden. Follow the B2114 into Handcross. Pass Nymans on your left and continue into Staplefield. Continue and turn right on to Slaugham Road and just before you go under a bridge turn right up East Park Lane. Continue along the lane and East Park Farmhouse will be on your right hand side.

For users of satellite navigation, please use the postcode RH17 6DG or What3words: [///trail.blush.glove](https://www.what3words.com/#!/en/09G4-09G4-09G4)

The National Trust

The National Trust is Europe's leading conservation charity, and is committed to preserving special places for ever, for everyone. The Trust depends on the income it generates from its rental properties, and it could not deliver its core objectives without the support of its thousands of tenants and volunteers.

The successful tenant will receive Tenant-Custodian membership of the National Trust which entitles them to free access to Trust properties across England and Wales.

The Property

Ground Floor

Rear Entrance Lobby

Leads in to utility room and then on to the kitchen

Kitchen

Modern kitchen with larder, leads into main hallway.

Downstairs living spaces.

3 reception rooms. One large living space with new log burner. Another large dining room and then a 3rd room great for an office or additional bedroom.

First Floor

Bedroom 1

Large Double Bedroom

Bedroom 2

Large Double Bedroom

Bedroom 3

Large Double Bedroom

Bathroom

Modern family bathroom with bath and standing shower cubicle.

Outside

Large outbuilding ideal for storage. There is also a large wraparound garden with plenty of private parking.

Outgoings and Services

The property benefits from mains electricity, water and sewerage supplies. Tenants are to provide their own white goods.

TV and Internet connection must be organised by the tenant.

The tenant is responsible for all outgoing relating to the property.

Council Tax

The tenant is to pay Council Tax. The property is in Band F for Council Tax and is payable to Mid Sussex District Council.

Energy Performance Certificate

An Energy Performance Certificate is available for this property in accordance with the Energy Performance of Buildings Regulations.

Score	Energy rating	Current	Potential
92+	A		
81-91	B		
69-80	C		76 C
55-68	D	60 D	
39-54	E		
21-38	F		
1-20	G		

The Tenancy

Term

The property is available to let under an Assured Shorthold Tenancy for an initial term of 6 months, after which there could be an opportunity for the term to be extended.

Rent

The prospective tenant is asked to pay £2400.00 per calendar month. The rent is to be payable by Direct Debit monthly in advance with the first payment being made on the commencement of the tenancy.

Rent reviews

The National Trust carries out rent reviews of the property to open market value.

Deposit

The Tenant will not be required to pay a deposit or a holding deposit

Insurance

The National Trust will be responsible for insuring the building, but the Tenant will be responsible for insuring the contents

Repairing Responsibilities (Summary)

The Trust will be responsible for repairs to the structure, exterior of the building, installations for the supply of services, external decoration.

The Tenant will be responsible for internal repairs and decoration, garden, fences, drives, the cost of servicing appliances.

Sub Letting

The property shall be occupied as a single private residence only. There will be no right to assign, sub-let or part with possession for the whole or any part of the premises.

Pets

Tenants must seek the landlord's permission for any animals or birds to be kept at the property.

National Trust tenants

As a tenant of the National Trust, you'll receive a free 'tenant pass' throughout the duration of your tenancy. This means that you, your children (under 18) and one other adult can visit the places we care for, for free. You'll also receive a National Trust Handbook to help you plan your days out, a copy of the National Trust Magazine and a free parking permit for when you visit us.

It's important to know that the income we make from the places we let plays an essential role in funding our conservation work. It protects nature, beauty and history for generations to come.

We're keen to build long-lasting tenant-landlord relationships that bring stability and longevity to your plans and ours. We know that tenants have high expectations of their National Trust rental property, but we also expect them to look after the property as if we were looking after it. That's because being a National Trust tenant means looking after a piece of history. It means being a custodian of a building. And it means helping to protect it for the next generation.

Viewings and Further Information

Viewings

Viewings strictly by appointment only.

Contact Lilly-May Knight

Lilly.Knight@nationaltrust.org.uk for more information.

GDPR

Our full Privacy Policy can be found online at <https://www.nationaltrust.org.uk/features/privacy-policy>

As a Tenant of the National Trust, we will use your personal information to fulfil our contract with you. This may include, but is not limited to, sending you rental invoices, tenant and landlord correspondence, and contacting you with information about issues or activities relating to your lease. We will not pass your details to third parties except where you have provided explicit consent or where we need to do so in order to fulfil our legal or landlord responsibilities, for example if we need to send your address or contact details to a maintenance contractor so they can carry out repairs, or where we are required to liaise with Council Tax departments or Utilities companies at the beginning or end of a Tenancy.

For further information about being a National Trust tenant, you can visit us online at www.nationaltrust.org.uk/tenants

Tenant Fees Act 2019 – National Trust Permitted Payments Schedule – 1st June 2019

Permitted Payment	Notes
Deposits	Whilst the receipt of a deposit is a permitted payment under the Tenant Fees Act 2019, for organisational reasons, we do not currently take deposits or holding deposits for our residential lettings.
The Rent	The agreed rent for the property is a permitted payment and payable as per the terms of the Tenancy.
Utilities (Water, Gas, Electricity, Septic Tank)	<p>Tenant/s will be responsible for the payment of Utilities.</p> <p>Where forming part of the letting and as set out in the Tenancy agreement, we may recharge a utility supply to a residential property, including the proportional element of any standing charges and VAT if appropriate. Where properties are not connected to mains drainage, we may recharge the proportional costs of emptying the septic tank to the Tenant/s.</p> <p>In line with the Tenant Fees Act 2019, we may also add an administration charge for Water at £5 per annum for a property without a meter and £10 for a property with a meter.</p>
Council Tax	<p>Tenant/s will be responsible for the payment of council tax.</p> <p>Although these situations are uncommon, we may pay these and recharge these costs to Tenants where appropriate.</p>
Telecoms/Broadband	<p>Tenant/s will be responsible for the payment of their supply of communication costs such as Telecoms and Broadband.</p> <p>The sub-recharging of communications costs such as telephone and broadband are a permitted payment under the Tenant Fees Act 2019, although these situations are uncommon we may recharge these costs to Tenants where appropriate.</p>
Fee for Variation of Tenancy	When requested by the Tenant/s, capped at £50, or reasonable costs incurred if higher as permitted by the Tenant Fees Act 2019.
Early Termination of Tenancy	<p>Where the Tenant/s request the tenancy is terminated early, we may ask the Tenant/s to pay the costs associated with re-advertising the property. The Rent will remain payable until a new Tenancy commences.</p> <p>The costs charged will not exceed the loss or reasonable costs incurred by the Trust.</p>
Default Charges	We may charge interest on late rental payments at the rate set out in Schedule 1, paragraph 4(5) of the Tenant Fees Act 2019