

BUTLER & STAG



The Old School School Lane, High Laver

Ongar

Guide Price £1,250,000



The Old School School Lane

High Laver, Ongar

Guide Price £1,250,000 – £1,350,000 Tucked away down a private driveway, The Old School is located in the picturesque and peaceful village of Magdalen Laver, offering a rare opportunity to own a piece of local history.

- Private Driveway
- Detached Family Home
- Stunning Grounds
- Kitchen/Breakfast Room
- Four Bedrooms/Two Bathrooms
- Spacious Lounge





This charming former schoolhouse, dating back to 1862, has been thoughtfully converted to offer a spacious and character-filled living space, seamlessly blending period features with modern comforts.

Upon entry, the grand entrance hallway immediately captures attention with its striking spiral staircase leading to the first floor. This central hallway provides access to the generously sized lounge, a spacious kitchen/breakfast room, and a dining room that enjoys views over the beautifully landscaped rear garden – creating a tranquil setting for family gatherings and meals.

On the first floor, you'll find three well-proportioned bedrooms, offering plenty of space for family or guests, along with a luxurious four-piece family bathroom. A versatile fourth bedroom is located on the ground floor, at the end of the house, beyond the lounge and study. This room is ideally suited for use as a guest suite or for multi-generational living, with the added convenience of its own kitchen and en-suite bathroom.

The combination of the property's unique history and the modern living spaces it offers makes The Old School a truly exceptional family home.

Outside, the property enjoys a private driveway and has the added benefit of planning permission for the construction of a double garage. Situated in the heart of the countryside, The Old School provides a peaceful, rural setting while still offering easy access to local amenities and transport links.

This is a rare opportunity to acquire a characterful home in one of Essex's most tranquil locations.

Council Tax band: F

Tenure: Freehold







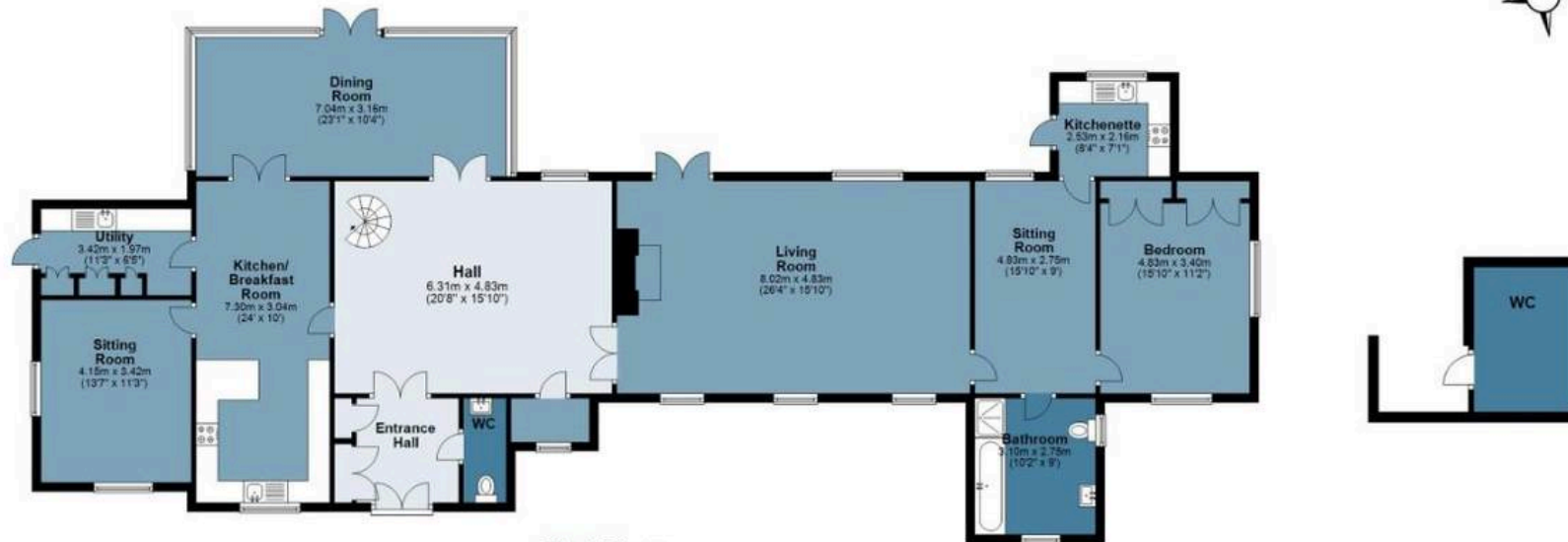
High Laver

Approx. Gross Internal Area 293 Sq M (3154 Sq Ft)

BUTLER & STAG

Ground Floor

Approx. 202.6 sq. metres (2181.0 sq. feet)



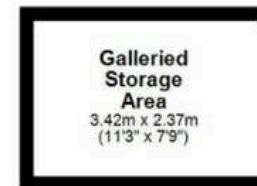
First Floor

Approx. 82.3 sq. metres (885.7 sq. feet)



Second Floor

Approx. 8.1 sq. metres (87.3 sq. feet)



Measurements are approximate and for illustration purposes only. While we do not doubt the accuracy and completeness, we advise you conduct a careful independent assessment of the property to determine monetary value.

FROM EAST LONDON ENERGY TO WEST ESSEX EASE

We Make Moving Home Easy.

At Butler and Stag, we do more than just connect London to West Essex – we make the move seamless. With offices spanning from vibrant East London to the tranquillity of West Essex, we understand the nuances of each area and the journey people take between them. Our marketing goes beyond standard listings, showcasing every property with precision, creativity, and reach that others simply can't match. Coupled with an unparalleled attention to detail, from first enquiry to final move-in, we ensure every client and customer feels informed, supported, and confident. Simply put, we do the little things that make a big difference, setting us apart in every step of the property experience.



LONDON STRATFORD SOUTH WOODFORD BUCKHURST HILL LOUGHTON EPPING BEYOND

Like what you see? Let's talk

Book your **FREE** valuation now



01992 667666

theydon@butlerandstag.com

4 Forest Drive, Theydon Bois, CM16 7EY

[butlerandstag.uk](https://www.butlerandstag.uk)

IMPORTANT NOTICE - These particulars have been prepared in good faith and they are not intended to constitute part of an offer or contract. We have not performed a structural survey on this property and the services, appliances and specific fittings have not been tested. All photographs, measurements, floor plans and distances referred to are given as a guide and should not be relied upon.

BUTLER & STAG

