

Brackenthwaite, Acklam



£140,000

**IH** INGLEBY HOMES





Nestled in the charming area of Brackenthwaite, Ackalm, this delightful end-terrace house offers a perfect blend of comfort and convenience. Spanning approximately 624 square feet, the property features two well-proportioned bedrooms, making it an ideal choice for small families, or first time buyers.

Priced to sell, early viewing is advised.

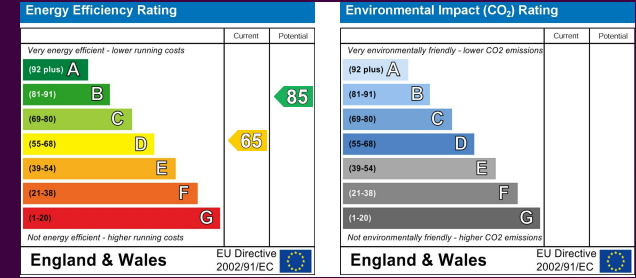
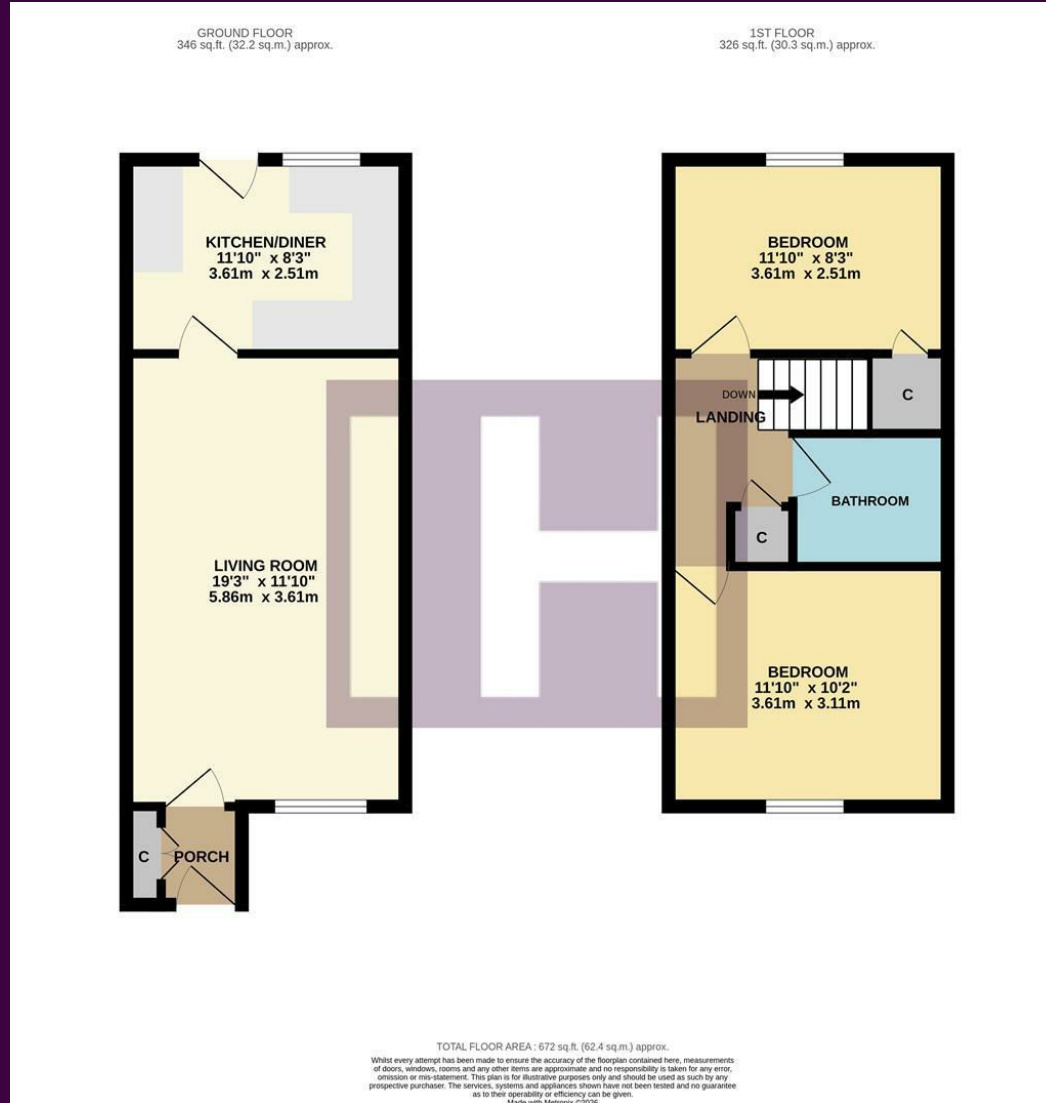
The impressive refitted kitchen and bathroom are stand out features in a property that is tasteful and attractive throughout, ready to move in to.



Comprising an entrance porch with built-in storage, a large living room, and rear refitted kitchen kitchen/diner to the ground floor. The first floor delivers two spacious double bedrooms and the modern refitted family bathroom.

An enclosed rear garden is well-maintained with patio and lawn, and a rear gate leads toward the parking and garage.

# The Layout



# The Location



Council Tax Band:  
Tenure:

B  
Freehold



- Much improved and impressive two bedroom property
- Favoured 'Baldoon Sands' area of Acklam
- Ideal first purchase - Early viewing advised
- Attractive refitted kitchen and bathroom
- Enclosed rear garden, parking and garage
- Call 01642 671025