



Kensington Park Road, W11

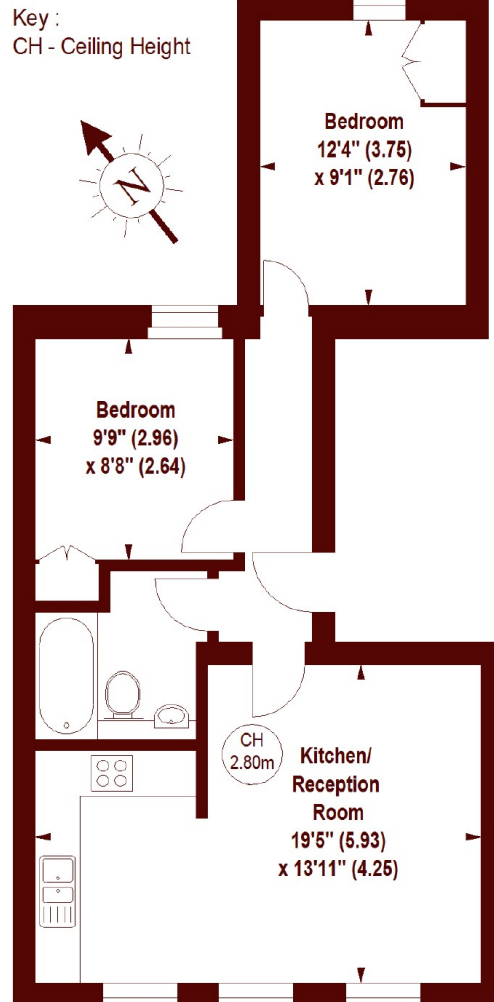
£900,000

2 1 1 C

- Beautiful Building
- Two Double Bedrooms
- High Ceilings
- Westerly Aspect
- Moments to Westbourne Grove
- Prime Notting Hill

Kensington Park Road, W11

APPROX. GROSS INTERNAL FLOOR AREA 561 SQFT / 52.12 SQM



SECOND FLOOR

The floor plan is not to scale and measurements and areas shown are approximate and therefore should be used for illustrative purposes only. The plan has been prepared in accordance with the RICS code of Measuring Practice and whilst we have confidence in the information produced, it must not be relied on.

If there is any aspect of particular importance, you should carry out or commission your own inspection of the property.

Copyright of FeaturePRO.

Marsh & Parsons Notting Hill

2-6 Kensington Park Road,
London, W11 3BU
020 7313 2890