



Lowfield Crescent, Littleport CB6 1FP

welcome to

Lowfield Crescent, Littleport

A very well presented semi-detached house located within a popular residential area of Littleport offering three bedrooms, en-suite facilities, open plan kitchen/diner and off road parking - Viewing highly recommended.

Entrance Hall

With radiator, stairs leading to first floor and doors to:

Cloakroom/W.C.

Fitted with a suite comprising low level w.c, wash hand basin, radiator and double glazed window to front.

Living Room

With radiator and double glazed window to front aspect.

Kitchen/Diner

With a fitted range of base units and drawers with work surfaces over to three sides, matching wall units, inset stainless steel sink with mixer tap over, built in double under oven with gas hob and chimney style extractor over, integrated dishwasher, space for fridge/freezer, radiator, double glazed window to rear aspect and double doors opening to rear garden.





First Floor Landing

With loft access, storage cupboard, double glazed window to side aspect and doors to:

Bedroom One

With radiator, built in double wardrobe, double glazed window to rear aspect and door to:

En-Suite Shower Room

Fitted with a suite comprising shower enclosure, low level w.c, pedestal wash hand basin, radiator and double glazed window to side.

Bedroom Two

With radiator and double glazed window to front aspect,

Bedroom Three

With radiator and double glazed window to front.

Bathroom

Fitted with a suite comprising panel enclosed bath with mixer tap and shower attachment over, low level w.c, pedestal wash hand basin, radiator, shaver point, part tiled and double glazed window to rear.

Outside

To the front of the property is a blocked paved driveway for two cars. Gated access leads to the rear garden which has an initial paved patio area with cover decked area for outdoor entertaining and opens to a mainly lawned garden fully enclosed by fencing.



view this property online williamhbrown.co.uk/Property/ELY110247



welcome to

Lowfield Crescent, Littleport

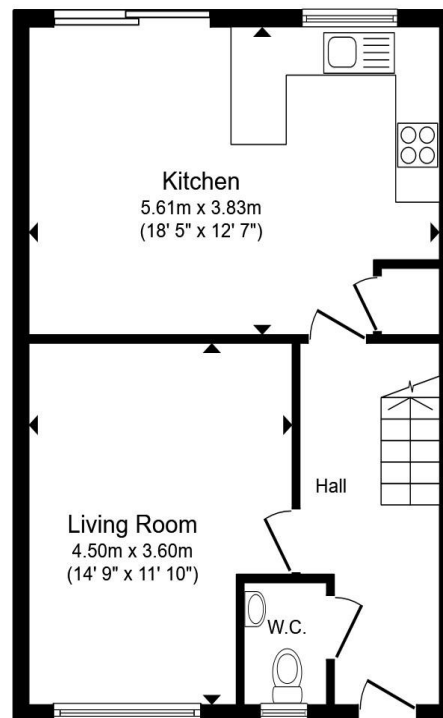
- Complete Upward Chain
- Semi-Detached House
- Popular Development
- Open Plan Kitchen/Diner
- Three Bedrooms

Tenure: Freehold

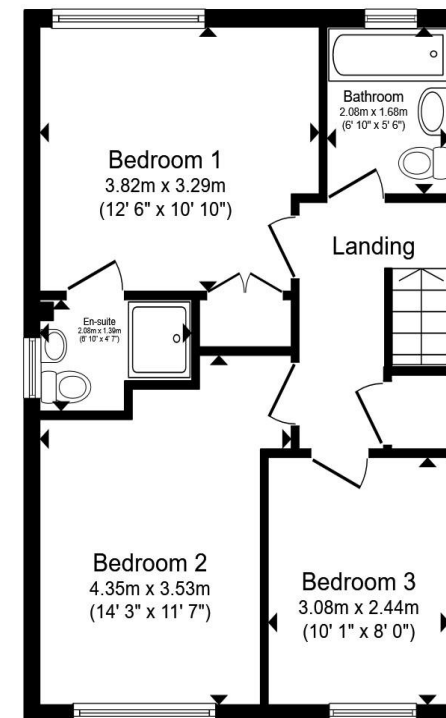
EPC Rating: B

Council Tax Band: C

£275,000



Ground Floor



First Floor

Total floor area 94.5 m² (1,017 sq.ft.) approx

This floor plan is for illustrative purposes only. It is not drawn to scale. Any measurements, floor areas (including any total floor area), openings and orientation are approximate. No details are guaranteed, they cannot be relied upon for any purpose and they do not form part of any agreement. No liability is taken for any error, omission or misstatement. A party must rely upon its own inspection(s). Powered by www.propertybox.io



view this property online williamhbrown.co.uk/Property/ELY110247



Property Ref:
ELY110247 - 0005

1. MONEY LAUNDERING REGULATIONS Intending purchasers will be asked to produce identification documentation at a later stage and we would ask for your co-operation in order that there is no delay in agreeing the sale. 2. These particulars do not constitute part or all of an offer or contract. 3. The measurements indicated are supplied for guidance only and as such must be considered incorrect. Potential buyers are advised to recheck measurements before committing to any expense. 4. We have not tested any apparatus, equipment, fixtures or services and it is in the buyers interest to check the working condition of any appliances. 5. Where an EPC, or a Home Report (Scotland only) is held for this property, it is available for inspection at the branch by appointment. If you require a printed version of a Home Report, you will need to pay a reasonable production charge reflecting printing and other costs. 6. We are not able to offer an opinion either written or verbal on the content of these reports and this must be obtained from your legal representative. 7. Whilst we take care in preparing these reports, a buyer should ensure that his/her legal representative confirms as soon as possible all matters relating to title including the extent and boundaries of the property and other important matters before exchange of contracts.

William H Brown is a trading name of Sequence (UK) Limited which is registered in England and Wales under company number 4268443, Registered Office is Cumbria House, 16-20 Hockliffe Street, Leighton Buzzard, Bedfordshire, LU7 1GN. VAT Registration Number is 500 2481 05.

 **william h brown**



01353 663311



ely@williamhbrown.co.uk



6 Forehill, ELY, Cambridgeshire, CB7 4AF



williamhbrown.co.uk