



**Kingsmere, 66 Main Street, Gunthorpe,
Nottingham, NG14 7EU**

Guide Price £525,000

Tel: 01636 816200

 **RICHARD
WATKINSON
PARTNERS**

Surveyors, Estate Agents, Valuers, Auctioneers

- An Individual Detached Home
- Spacious Lounge
- Open Plan Garden Room
- Utility, G.F W/C
- Bathroom Plus Ensuite
- Superb Family Sized Accommodation
- Versatile 2nd Reception Room
- Modern Breakfast Kitchen
- 4 Good Bedrooms
- Gated Driveway, Double Garage

A unique opportunity to purchase this attractive, individual home, occupying a prominent position on Main Street and offering superbly appointed accommodation throughout.

The property is ideal for families, with spacious and versatile accommodation including a large entrance hall, a spacious lounge, and a versatile 2nd reception room, currently a family room. There is a modern breakfast kitchen with integrated appliances and a useful utility room off. Across the rear of the property is a superb open plan garden room with French doors and Velux skylights creating a light and airy space. There is a ground floor W/C then arranged off an attractive galleried landing are 4 good bedrooms and the family bathroom. The principal bedroom features a modern en-suite shower room whilst outside is gated driveway parking to the front of the double garage and an established rear garden offering a good level of privacy.

Gunthorpe is a pretty Trentside village with a thriving community and including a range of excellent facilities including a small local primary school. There are well-regarded bars and restaurants from luxury dining to family fun, as well as lovely walks along the River Trent and beyond.

ACCOMMODATION

A contemporary style composite entrance door leads into the entrance hall.

ENTRANCE HALL

A spacious and welcoming entrance hall with oak effect laminate flooring, two central heating radiators, coved ceiling, a spindled staircase rising to the first floor galleried landing and a useful understairs storage cupboard with hanging rail.

BREAKFAST KITCHEN

Fitted with a range of modern cream fronted high gloss base and wall cabinets with underlighting and butchers block worktops, tiled splashbacks, a ceramic 1.5 bowl single drainer sink with mixer tap and built-in appliances including a five burner gas hob with extractor hood over, an eye level double oven by Hotpoint and an integrated Hotpoint dishwasher. Tiled flooring, a uPVC double glazed window to the rear and side, coving and spotlights to the ceiling, a contemporary style anthracite central heating radiator and a door into the utility room.

UTILITY ROOM

A useful space fitted with a range of cream fronted high gloss base and wall cabinets with

rolled edge worktops and an inset 1.5 bowl single drainer stainless steel sink with mixer tap. There is space beneath the worktop for appliances including plumbing for a washing machine. Tiling for splashbacks, tiled flooring, a uPVC double glazed door and window to the side aspect and a wall mounted Worcester boiler.

LOUNGE

A good sized reception room with decorative coving to the ceiling, two central heating radiators, a uPVC double glazed bow window to the front aspect and a feature fireplace with decorative surround, marble insert and hearth housing a coal effect gas fire. Glazed double doors lead into the garden room.

OPEN PLAN GARDEN ROOM

A light bright and airy space at the rear of the property with double glazed windows and 2 sets of French doors onto the rear garden. Vaulted ceiling with spotlights and Velux skylights, tiled flooring throughout with electric underfloor heating, a contemporary style vertical radiator in white. Return door to the entrance hall.

OFFICE/FAMILY ROOM

Another versatile reception space with coved ceiling, central heating radiator and a uPVC double glazed window to the front aspect.

GROUND FLOOR W/C

Fitted in white with a pedestal wash basin with hot and cold taps and a dual flush toilet. Tiling to half height on the walls, tiled flooring, coved ceiling, a uPVC double glazed obscured window to the side aspect, central heating radiator and a high level cupboard housing the consumer unit.

FIRST FLOOR GALLERIED LANDING

An attractive space with coved ceiling, access hatch to the roof space, an airing cupboard housing the foam insulated hot water cylinder with shelving above, a central heating radiator and a uPVC double glazed window to the front aspect.

BEDROOM ONE

A good sized principal bedroom with two central heating radiators, two uPVC double glazed windows to the rear aspect, coved ceiling, fitted mirror fronted wardrobes and a door to the en-suite shower room.

EN-SUITE SHOWER ROOM

Superbly fitted with a contemporary style suite including a back-to-wall toilet, a countertop wash basin with mixer tap and drawers below and a shower enclosure with mains fed rainfall shower and spray hose. Fully tiled walls, tiled floor, a chrome towel radiator, spotlights and extractor fan to the ceiling and a uPVC double glazed obscured window to the side aspect.

BEDROOM TWO

A double bedroom with a central heating radiator, a uPVC double glazed window to the front aspect and fitted bedroom furniture including a double wardrobe and a dressing table with drawers.

BEDROOM THREE

With a central heating radiator, a UPVC double glazed window to the front aspect and a range of fitted bedroom furniture including a double wardrobe and dressing table with drawers.

BEDROOM FOUR

With a central heating radiator, coved ceiling and a uPVC double glazed window to the rear aspect.

BATHROOM

A four piece bathroom, fitted with a pedestal wash basin, a dual flush toilet, a corner bath with mixer tap and handheld shower, and a shower enclosure with electric shower and glazed sliding screen. Tiled flooring and walls and a uPVC double glazed obscured window to the rear aspect.

DRIVEWAY & DOUBLE GARAGE

A sliding gate at the front of the plot opens onto extensive parking for numerous vehicles and in turn to the brick built detached double garage.

GARDENS

The property occupies a mature plot, with access at the side of the property to the rear garden which is enclosed with a combination of brick walling and timber fencing. The garden provides a good sized paved patio area and a level lawn edged with mature planted borders.

GUNTHORPE VILLAGE

The village of Gunthorpe is a very pretty Trent-side village having a primary school and thriving local community with water-side public houses and restaurants. Further facilities are available in the nearby market town of Bingham and in the adjacent village of Lowdham there is a Doctor's surgery and train station with links to Nottingham and Newark. The village is ideally placed close to the A6097 which provides links to the A46 and A52, A1 and M1.

COUNCIL TAX

The property is registered as council tax band F.

VIEWINGS

By appointment with Richard Watkinson & Partners.

ADDITIONAL INFORMATION

Please see the links below to check for additional information regarding environmental criteria (i.e. flood assessment), school Ofsted ratings, planning applications and services such as broadband and phone signal. Note Richard Watkinson & Partners has no affiliation to any of the below agencies and cannot be responsible for any incorrect information provided by the individual sources.

Flood assessment of an area:

<https://check-long-term-flood-risk.service.gov.uk/risk#>

Broadband & Mobile coverage:-

<https://checker.ofcom.org.uk/en-gb/broadband-coverage>

School Ofsted reports:-

<https://reports.ofsted.gov.uk/>

Planning applications:-

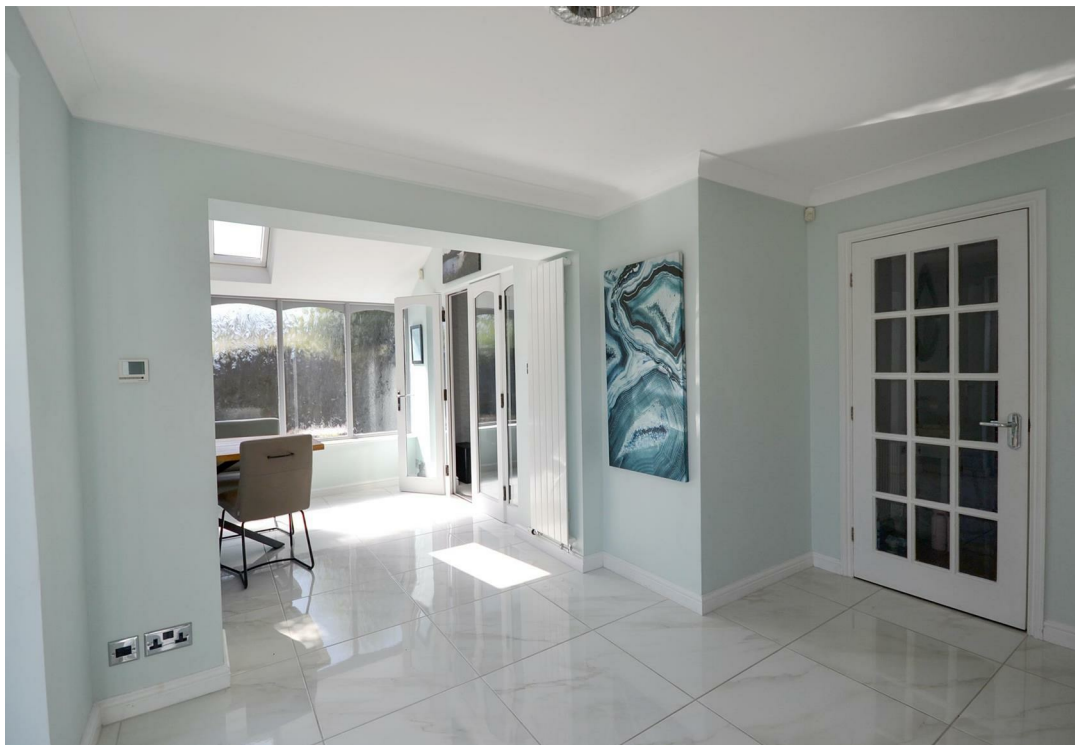
<https://www.gov.uk/search-register-planning-decisions>

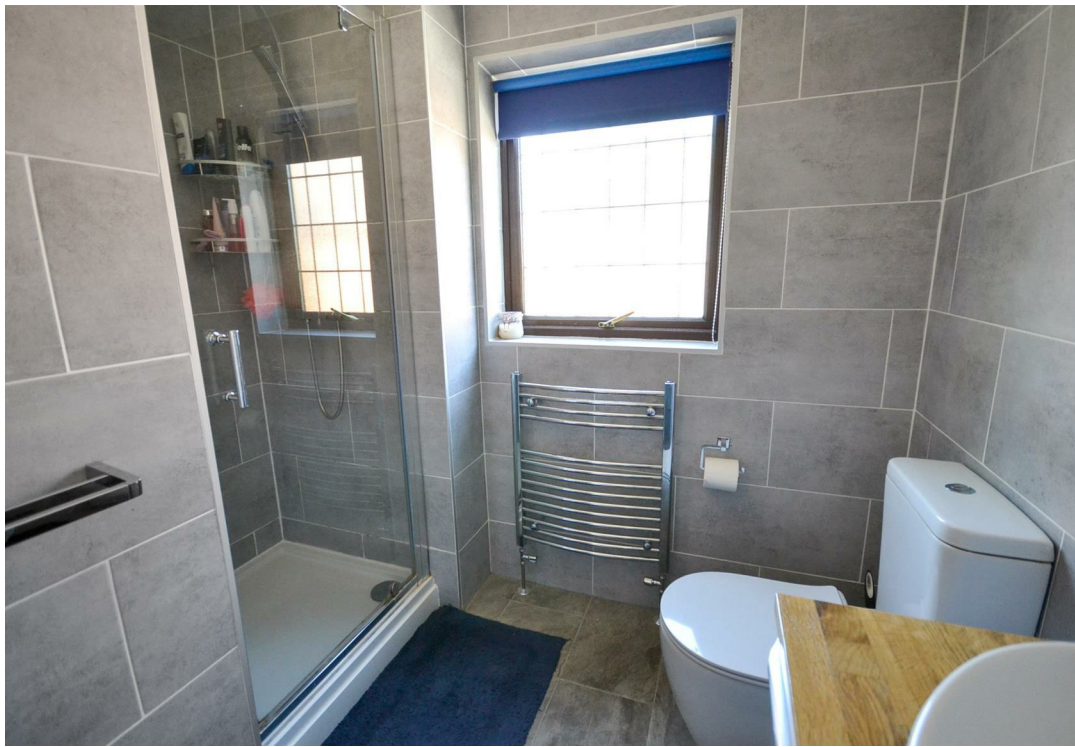
Once an offer is accepted, there will be a small charge for our biometric Anti Money Laundering compliance check of £14 + VAT per purchaser.





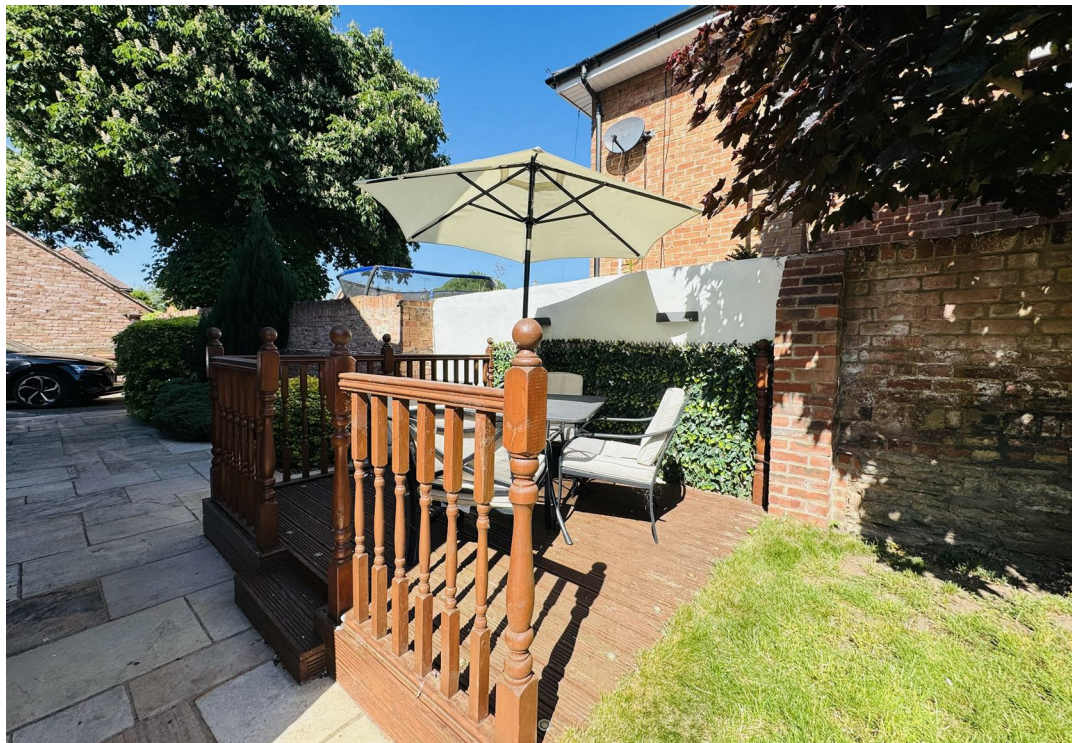




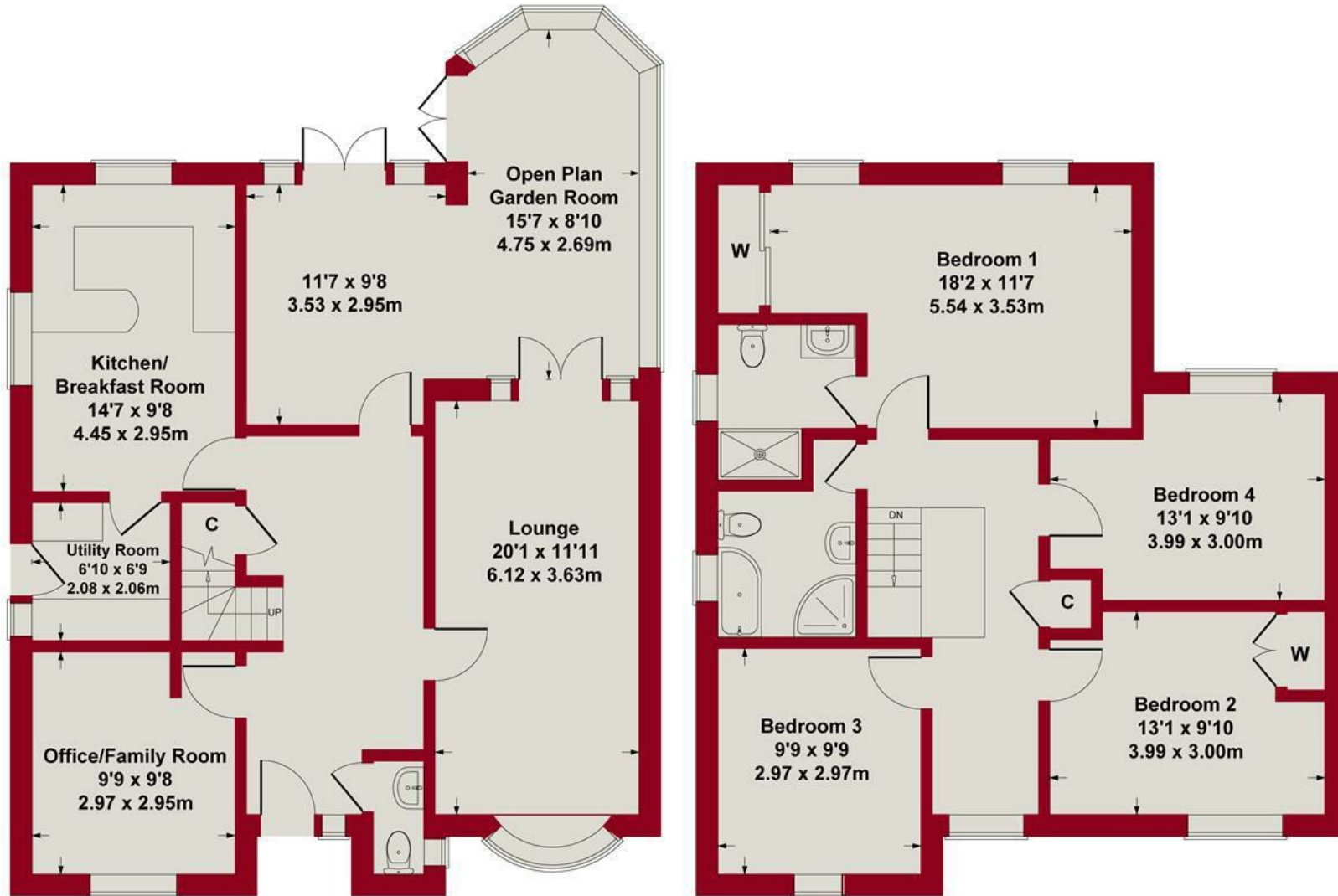








Approximate Gross Internal Area
2030 sq ft - 189 sq m



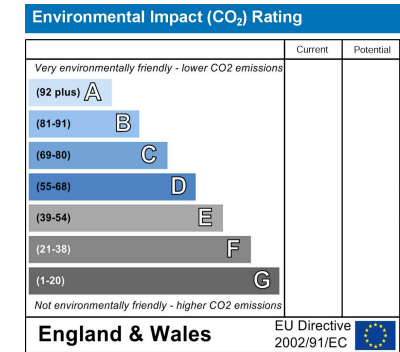
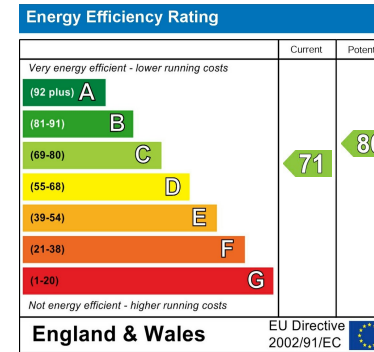
GROUND FLOOR

FIRST FLOOR

Whilst every attempt has been made to ensure the accuracy of the floor plan contained here, measurements of doors, windows, rooms and any other items are approximate and no responsibility is taken for any error, omission, or mis-statement. This plan is for illustrative purposes only and should be used as such by any prospective purchaser or tenant. The services, systems and appliances shown have not been tested and no guarantee as to their operability or efficiency can be given.

Copyright V360 Ltd 2025 | www.houseviz.com





These particulars, whilst believed to be accurate are set out as a general outline only for guidance and do not constitute any part of an offer or contract. Intending purchasers should not rely on them as statements of representation of fact, but must satisfy themselves by inspection or otherwise as to their accuracy. No person in this firm's employment has the authority to make or give any representation or warranty in respect of the property. Any fixtures and fittings not mentioned in these details are excluded from the sale price. No services or appliances which may have been included in these details have been tested by the selling agent and therefore cannot be guaranteed to be in good working order.

As part of the service we offer we may recommend ancillary services to you such as mortgage advice, solicitors and surveyors which we believe will help with your property transaction. We wish to make you aware that should you decide to proceed we may receive a referral fee or equivalent. This could be a fee, commission, payment or other reward. We will not refer your details unless you have provided consent for us to do so. You are not under any obligation to provide us with your consent or to use any of these services. You are also free to choose an alternative provider.

Thinking of selling? For a FREE no obligation quotation call 01636 816200



Richard Watkinson & Partners is the trading name of Richard Watkinson Ltd.
Registered in England. Ltd Registration number: 07140024

20 King Street,
Southwell NG25 0EH
Tel: 01636 816200
Email: southwell@richardwatkinson.co.uk



Surveyors, Estate Agents, Valuers, Auctioneers