



20 Carr Head Lane, Poulton-Le-Fylde
£275,000

Miller Metcalfe
Every step of the way

20 Carr Head Lane

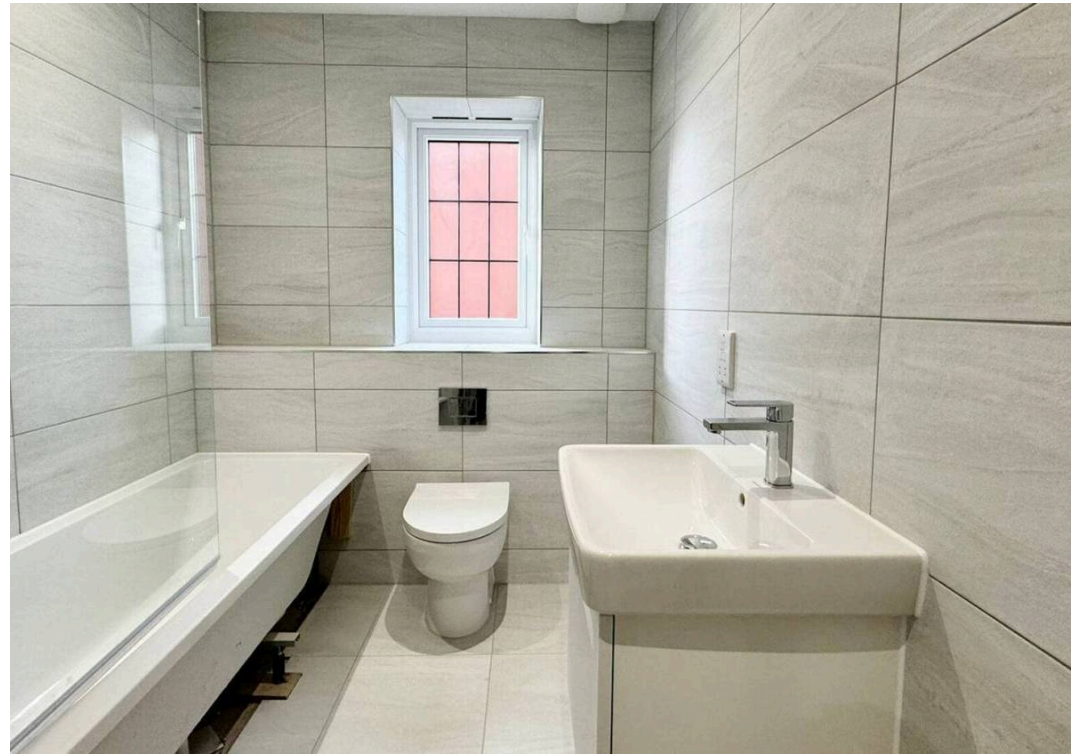
Poulton-Le-Fylde, Poulton-Le-Fylde

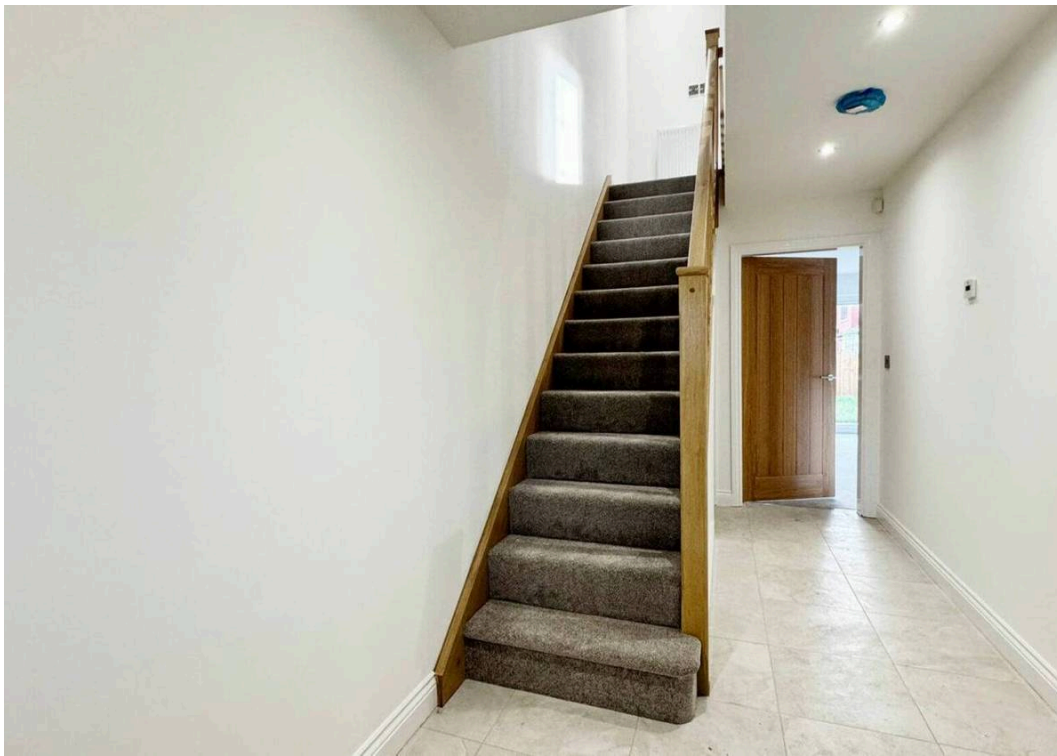
THE THORNTON - Carpets & Flooring Included!! Located in the sought-after village of Poulton-le-Fylde, The Thornton is a beautifully designed three-bedroom semi-detached home that offers modern comfort and efficiency. With solar panels included as standard, these homes are 25% more energy-efficient, making them a smart and sustainable choice. Stylish & Functional Living Step inside to a bright and spacious open-plan kitchen and living area, perfect for both relaxation and entertaining. Bi-folding doors span the full width of the home, opening to a landscaped garden and bringing the outdoors in. Underfloor heating adds a cozy touch, while a large ground-floor WC ensures convenience. Comfortable Bedrooms & Modern Bathrooms Upstairs, the primary bedroom is spacious and light-filled, complete with an en-suite and walk-in shower. The second bedroom fits a double bed comfortably, while the third bedroom is ideal for a child's room, guest space, or home office. The family bathroom offers a relaxing retreat for unwinding after a long day. Outdoor Space & Parking The private landscaped garden provides plenty of space for kids to play and adults to relax. A side entrance leads to the driveway, offering off-road parking for added ease. Luxury Living in a Prime Location Built to the highest standards, The Thornton combines style, efficiency, and practicality in a fantastic location. A perfect home for families or anyone looking for a modern, well-designed space. Don't miss out—book your viewing today!

Council Tax band: TBD

Tenure: Freehold







Ground Floor



Lounge / Dining: 5250 x 4300 (17'2 x 14'1)

Kitchen: 3150 x 3595 (10'3 x 11'8) o/all

WC: 1040 x 2115 (3'4 x 6'9) o/all

First Floor



Master Bedroom: 3700 x 3635 (12'1 x 11'9) o/all

En-suite: 1475 x 2860 (4'8 x 9'4) o/all

Bedroom 2: 3145 x 3060 (10'3 x 10'0)

Bedroom 3: 2660 x 3420 (8'7 x 11'2) o/all

Bathroom: 3145 x 1900 (10'3 x 6'2) o/all