



FULHAM PALACE ROAD, SW6

£3,200 per week (per month)

Three bedrooms
Close to Amenities
Sharers welcome

@marshandparsons
marshandparsons.co.uk

MARSH &
PARSONS

ABOUT THE PROPERTY

A well-presented and generously proportioned three double bedroom apartment. The property features a bright and spacious open plan kitchen reception room, a family bathroom, and three spacious double bedrooms, ideal for professional sharers or a family.

Ideal between Gowan and Wardo Avenues, the flat is superbly positioned within easy reach of the excellent local amenities found along Fulham Palace Road and Munster Road. Bishops Park and the River Thames are just a short walk away, offering beautiful green spaces and riverside walks.

Putney Bridge Underground Station (District Line) is

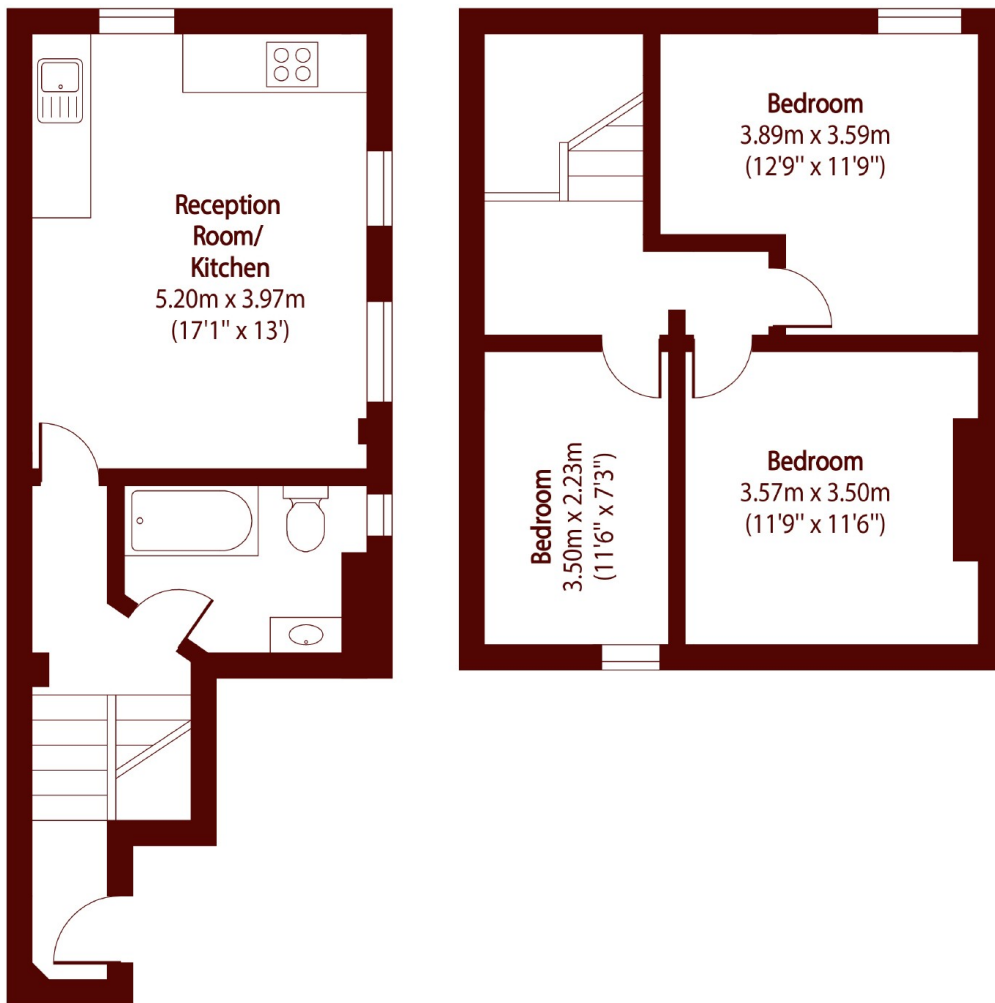








STEP INSIDE FULHAM PALACE ROAD



First Floor

Second Floor

Total area (approx): 77.81 sq m (838 sq. ft)

Bishops Park
020 7368 2480

Energy Rating: We aim to make our particulars both accurate and reliable. However, they are not guaranteed; nor do they form part of an offer or contract. If you require clarification on any points then please contact us, especially if you're traveling some distance to view. Please note that appliances and heating systems have not been tested and therefore no warranties can be given as to their good working order

**MARSH &
PARSONS**