



Page Hay Barn Lower Village, Blunsdon
Swindon

Guide Price £875,000
mcfarlane
property.com



Page Hay Barn Lower Village

Blunsdon, Swindon

McFarlane Sales and Lettings are proud to present this unique, stunning four-bedroomed detached family home discreetly positioned in the highly sought after area of Lower Blunsdon.

This impressive, beautifully designed property features a striking barn style design, has an abundance of natural light throughout including unique floor to ceiling windows that create a bright and airy atmosphere.

The property is immaculately presented throughout. At the heart of the home is a stunning open plan kitchen and dining area, ideal for family living and entertaining, alongside two separate reception rooms providing flexible living space. A generously sized study is perfect for home working or quiet reading, and a convenient downstairs W/C adds practicality.

Upstairs offers four well-proportioned, double bedrooms, including two en-suites and a modern family bathroom, ensuring comfort for all.

Additional benefits include a double carport equipped with an EV charging point, along with a thoughtfully designed private rear garden that provides a tranquil setting for the whole family to enjoy during sunny days and warmer evenings.

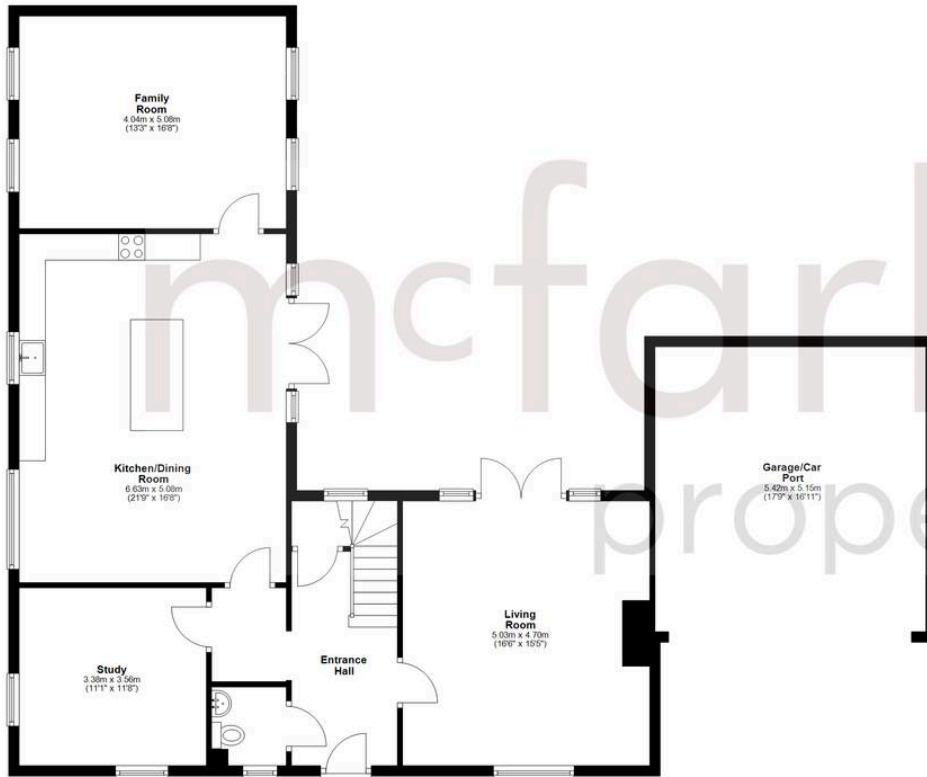
Access via a charming lane, the property enjoys a private and tranquil setting next to open fields offering a peaceful village feel, also a strong sense of community.

This is a rare opportunity to secure a high-





Ground Floor
Approx. 135.3 sq. metres (1456.5 sq. feet)



First Floor
Approx. 82.1 sq. metres (884.0 sq. feet)
(excluding Bedroom 4)



Total area: approx. 217.4 sq. metres (2340.5 sq. feet)

McFarlane Sales & Lettings

North Swindon, Redhouse Village Centre, Swindon - SN25 2FW

01793 296600 • swindon@mcfarlaneproperty.com • www.mcfarlaneproperty.com/