



72, London Road, Shrewsbury, SY2 6PN
£2,500 Per Month



72, London Road, Shrewsbury, SY2 6PN

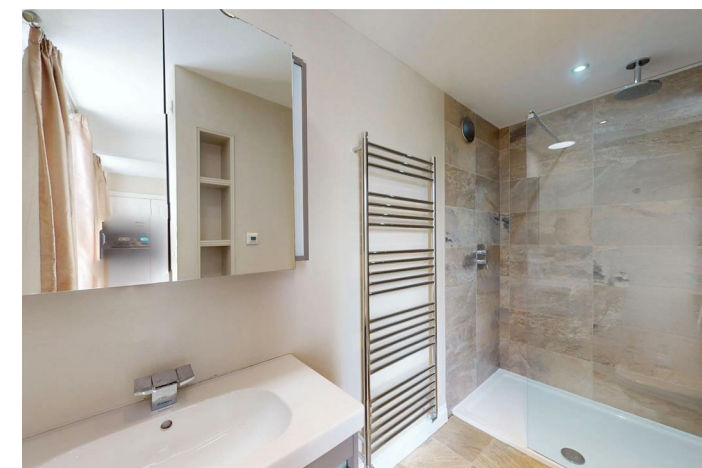
£2,500 Per Month

VIRTUAL TOUR AVAILABLE: An impressive and beautifully presented 3 storey four double bedroom Edwardian house of character which has been extensively modernised to a very high standard throughout. Includes driveway parking for four cars and integrated garage.

Available: Immediate

Description

Entrance vestibule and hall, living room, open plan family room, kitchen/dining room, utility, cloakroom, 4 double bedrooms, (1 with en-suite shower room), bathroom, further shower room, single garage with electric door, gated (electric) driveway parking for four cars, professionally landscaped gardens, gas fired central heating, double glazed windows. The property benefits from underfloor heating to the majority of the ground floor. EPC D



Unfurnished

Council Tax Band: E

Available: 19th June 2026

EPC: D

Floor Plans



Total area: approx. 172.4 sq. metres (1855.9 sq. feet)

We accept no responsibility for any mistake or inaccuracy contained within the floorplan. The floorplan is provided as a guide only and should be taken as an illustration only. The measurements, contents and positioning are approximations only and provided as a guidance tool and not an exact replication of the property.
Plan produced using PlanUp.

These particulars, whilst believed to be accurate are set out as a general outline only for guidance and do not constitute any part of an offer or contract. Intending purchasers should not rely on them as statements of representation of fact, but must satisfy themselves by inspection or otherwise as to their accuracy. No person in this firm's employment has the authority to make or give any representation or warranty in respect of the property.