

HUNTERS®

HERE TO GET *you* THERE

Riverside Walk, Airton. The Yorkshire Dales National Park.

Price £189,500



HUNTERS®

HERE TO GET *you* THERE



HUNTERS[®]

HERE TO GET *you* THERE



HUNTERS®

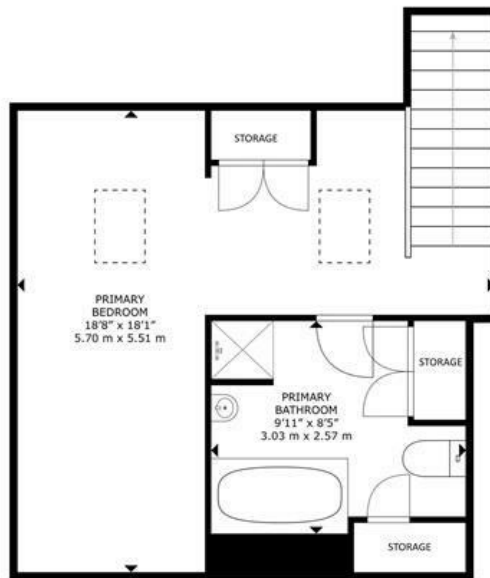
HERE TO GET *you* THERE



FLOOR 1

FLOOR 2

SIZES AND DIMENSIONS ARE APPROXIMATE, ACTUAL MAY VARY.



FLOOR 3

Energy Efficiency Rating

	Current	Potential
<i>Very energy efficient - lower running costs</i>		
(92 plus) A		
(81-91) B		
(69-80) C		
(55-68) D		66
(39-54) E	43	
(21-38) F		
(1-20) G		
<i>Not energy efficient - higher running costs</i>		
England & Wales	EU Directive 2002/91/EC	



Nestled in the picturesque setting of Riverside Walk, Airton, Skipton, this charming first and second floor apartment offers a generous living space of just shy of 1000 square feet.

Set alongside the River Aire and with a pleasant outlook in this sleepy part of the village.

Having served as a rental property for many years, it presents a wonderful opportunity for those looking to update and personalise their new home.

With delightful well-maintained gardens and plenty of parking, it has everything you need.

Upon entering, you are greeted by a welcoming entrance hall, complete with space for coats, leading to the main accommodation via a staircase. The fitted kitchen boasts a pleasant outlook, perfect for enjoying your morning coffee. The 'L' shaped living-dining room provides a versatile space for relaxation and entertaining, while a double bedroom with fitted wardrobes ensures ample storage.

The landing, adorned with a window that frames fine views, leads to the second floor, where you will find a spacious double bedroom featuring built-in storage, alongside a well-appointed house bathroom, also equipped with built-in storage.

Outside, the property benefits from parking directly adjacent, making it convenient for residents and guests alike. The delightful and well-maintained gardens, which run alongside the serene River Aire, offer a tranquil retreat, ideal for enjoying the natural beauty of the surroundings.

This property is perfectly suited as a second home or a retirement retreat, set within the stunning Yorkshire Dales National Park. With its peaceful location and potential for personalisation, it is an opportunity not to be missed.

On-Line-Bullet-Points

- Just shy of 1000 sq ft • In good order but requires updating • 2 Double bedrooms with fitted storage • Living-dining room with kitchen off • Delightful & tranquil village location • Alongside and with outlook to The River Aire • Parking & delightful communal gardens • No Forward Chain