



**Price**  
**£385,000**

**Freehold**

3x  1x  1x 

**Pebmarsh Drive, Wick  
Meadows, Wickford,  
Essex, SS12**

**OVER 60?**

Secure this property  
for up to **59% less!**

 **DOUGLAS  
ALLEN**  
Helping you move forwards



## Main features

- Beautifully presented throughout
- Perfect for first time buyers
- Stunning kitchen/diner
- Off street parking and garage
- Excellent location for High Street and station
- Within catchment of Oakfield Primary School

## Accommodation

### GROUND FLOOR

Hallway

Lounge: 13'3 x 12'5 (4.04m x 3.79m)

Kitchen/Diner: 15'6 x 10'10 (4.73m x 3.30m)

### FIRST FLOOR

Landing

Bedroom 1: 12'8 x 8'11 (3.86m x 2.72m)

Bedroom 2: 11'1 x 9'1 (3.38m x 2.77m)

Bedroom 3: 9'7 x 6'5 (2.92m x 1.96m)

Bathroom

### OUTBUILDING

Garage

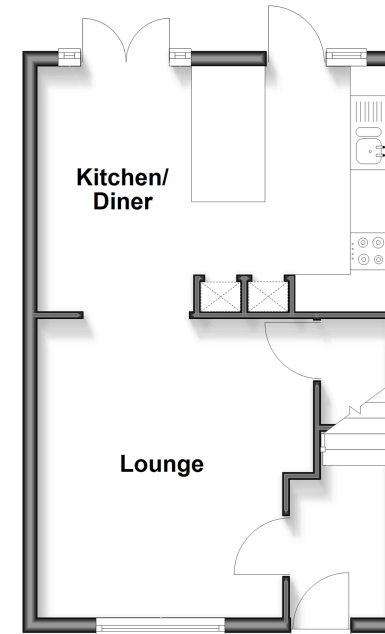
### OUTSIDE

Rear Garden

Off Street Parking

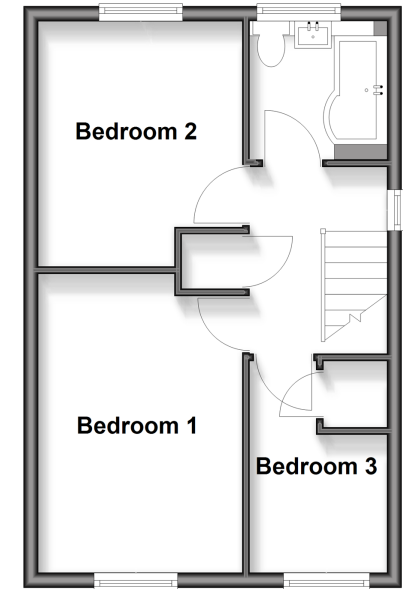
### Ground Floor

Approx. 35.6 sq. metres (382.7 sq. feet)



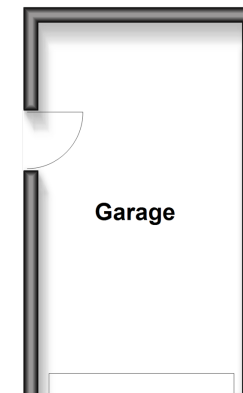
### First Floor

Approx. 35.6 sq. metres (382.7 sq. feet)



### Outbuilding 1

Approx. 14.1 sq. metres (151.3 sq. feet)



Call Wickford - 01268 561287 ■ [douglasallen.co.uk](http://douglasallen.co.uk)

- Legal advice should be taken to verify fixtures/fittings, planning, alterations and/or lease details
- Appliances & services are untested, dimensions are approximate and floor plans are not to scale
- Through a Homewise Home For Life Plan people aged 60+ can secure this property for up to 59% less, by purchasing a Lifetime Lease



53407414/20260214/RP/AH