



1 Mount View Terrace, Onchan, Isle of Man, Isle of Man, IM3
1AB

Asking Price £279,950

- Deceptively spacious 2 bedroom end-terrace home
- Front bedroom could potentially be reconfigured into two smaller bedrooms
- Large front reception room and spacious breakfast kitchen
- Rear views across Onchan towards the sea
- Two generous double bedrooms
- Large rear yard with potential for off-road parking, subject to permissions



Situated in a convenient and well-established residential location in Onchan, this deceptively spacious end-terrace home offers excellent accommodation throughout together with fantastic potential for a range of purchasers, including first-time buyers, growing families and investors alike.

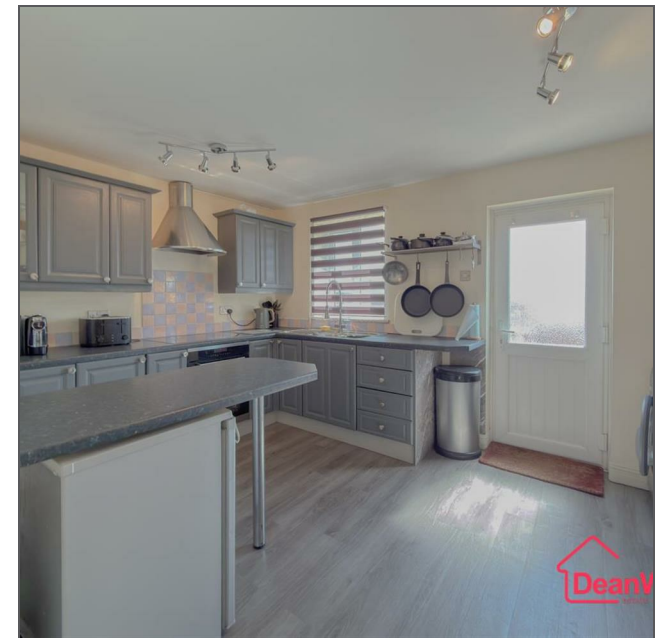
The property is approached via a front entrance porch which opens into a generous front reception room, providing an excellent everyday living and entertaining space. To the rear of the property is a spacious breakfast kitchen with ample room for dining and direct access onto the substantial rear yard.

To the first floor are two particularly large double bedrooms, both offering excellent proportions rarely found in similar properties. The principal front bedroom was previously configured as two separate bedrooms and could potentially be reinstated to create a three-bedroom layout, subject to any necessary consents or alterations. A large family bathroom completes the first-floor accommodation.

One of the standout features of the property is the outlook from the rear, enjoying elevated views across Onchan towards the sea, creating a pleasant backdrop to the home. Externally, the sizeable rear yard offers excellent outside space whilst also presenting potential for off-road parking if desired, subject to the relevant permissions.

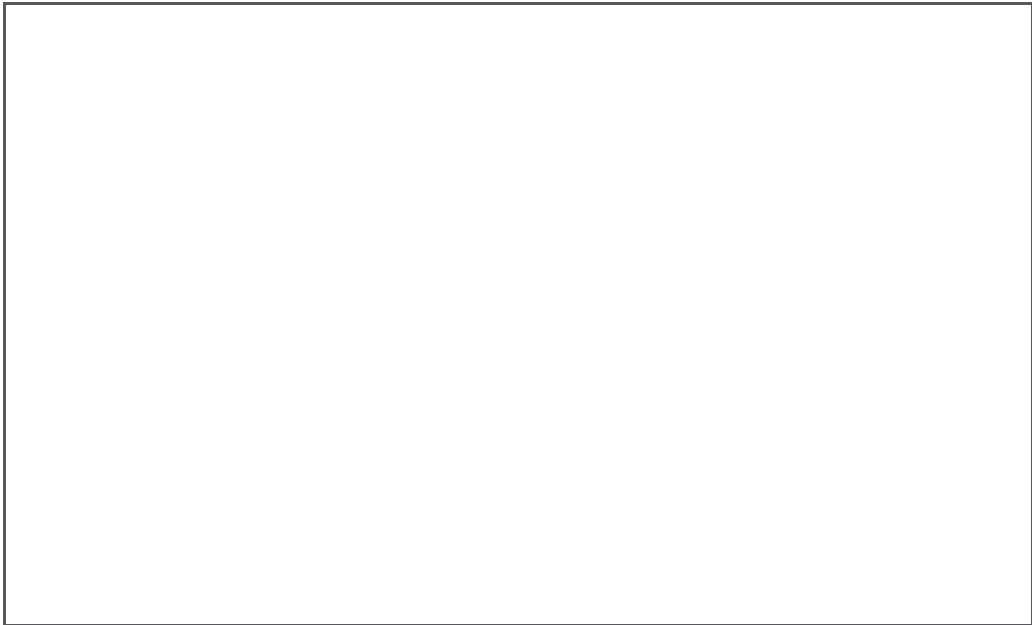
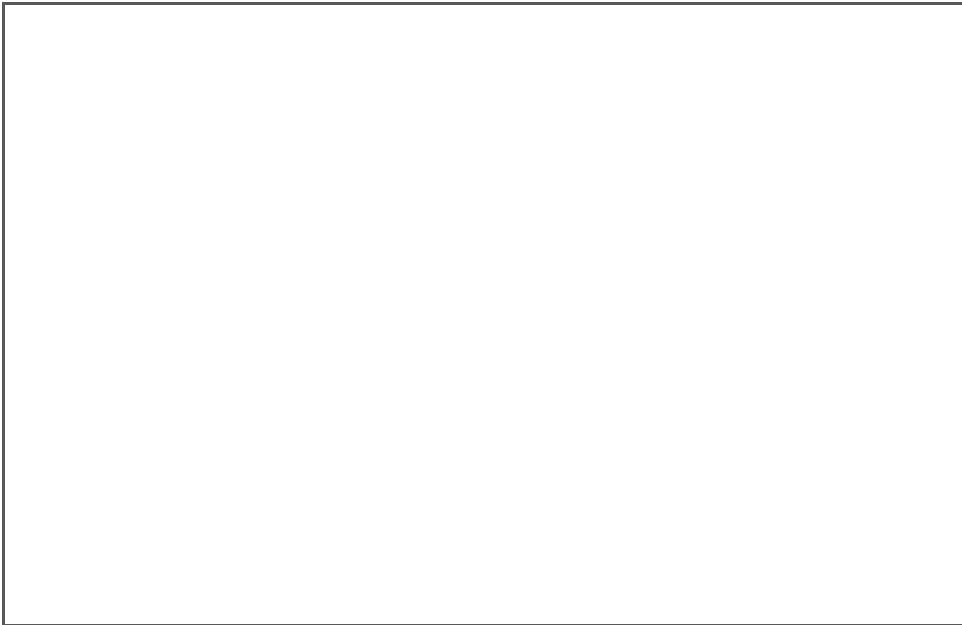
Offered for sale with vacant possession and no onward chain, this property represents an excellent opportunity for purchasers seeking a spacious home with scope to further enhance and personalise over time.

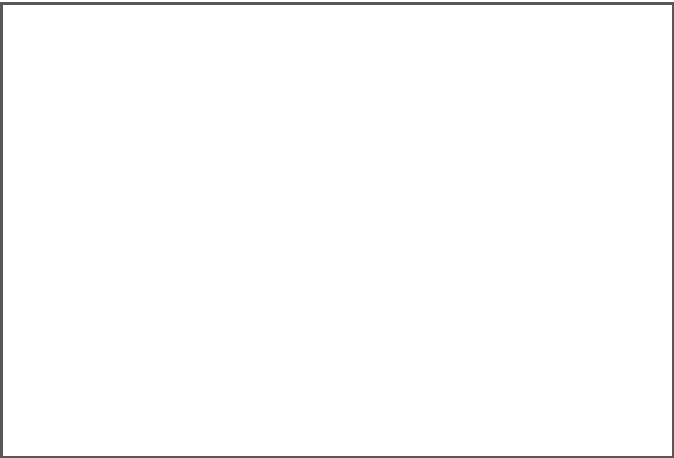








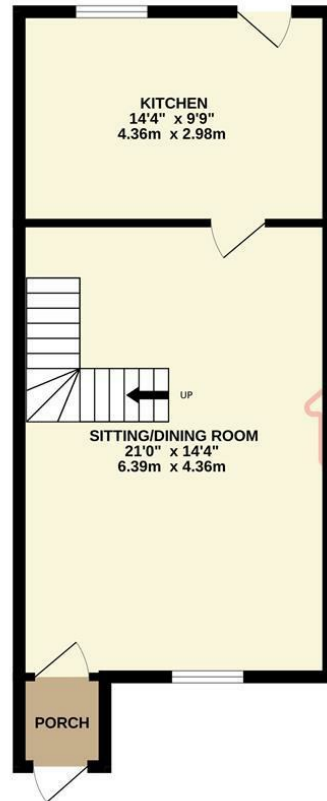




1 Mount View Terrace, Onchan, Isle of Man, Isle of Man, IM3 1AB



GROUND FLOOR
456 sq.ft. (42.4 sq.m.) approx.



1ST FLOOR
439 sq.ft. (40.8 sq.m.) approx.



TOTAL FLOOR AREA : 895 sq.ft. (83.2 sq.m.) approx.
Not to scale for identification purposes only
Made with Metropix ©2026

DOUGLAS

37 VICTORIA STREET
DOUGLAS
ISLE OF MAN IM1 2LF

T 01624 620606

F 01624 677363

E info@deanwood.co.im

CASTLETOWN

COMPTON HOUSE
9 CASTLE STREET CASTLETOWN
ISLE OF MAN IM9 1LF

T 01624 825995

F 01624 825996

E castletown@deanwood.co.im

RAMSEY

LEZAYRE HOUSE
87 PARLIAMENT STREET
RAMSEY ISLE OF MAN IM8 1AQ

T 01624 816111

F 01624 816588

E ramsey@deanwood.co.im

These particulars are for information purposes only. They do not constitute or form any contract nor should any statement contained herein be relied upon as a representation of fact. Neither the vendor nor DeanWood Agencies Limited ('the firm'), nor any officer or employee of the firm accept liability or responsibility for any statement contained herein. The vendor does not by these particulars, nor does the firm, nor does any officer or any employee of the firm have any authority to make or give any representation or warranty whatsoever as regards the property or otherwise. It is the sole responsibility of any person interested in the property described in these particulars to make all proper enquiries and searches to verify the description of the property and all other particulars herein.

FOR MORE PROPERTIES VISIT OUR WEBSITE @ deanwood.im