


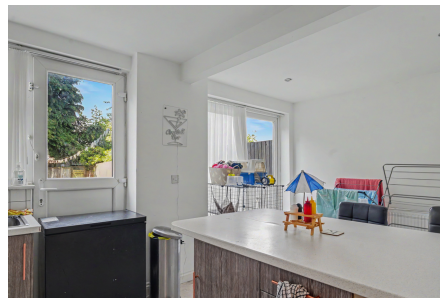


## Wildmoor Road, Shirley, Solihull, B90 3PU

Offers Over £245,000

 3  1  1



A Three Bedroom Mid-Terrace Home in Prime Shirley Location – No Upward Chain

**Shirley Office:**  
Black and Golds Estate Agents  
117 Stratford Road, Shirley, Solihull, B90 3ND

**Wythall Office:**  
Black and Golds Mortgages  
The Old Bakery House, Becketts Farm, Alcester Road, Wythall, B47 6AJ

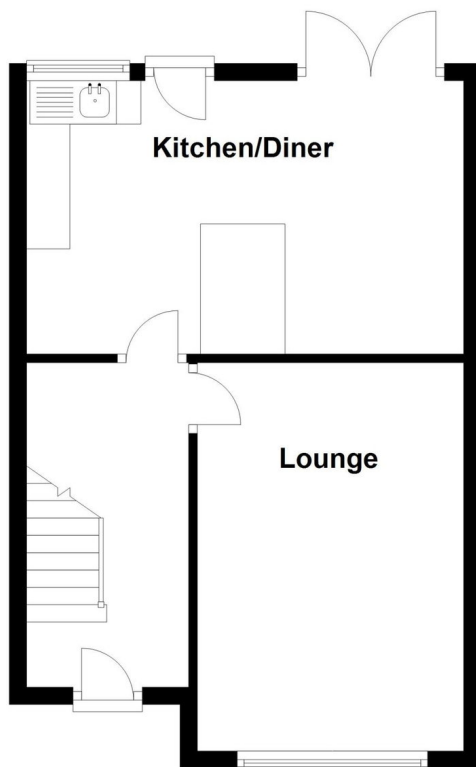
Black and Golds Letting Agents Limited, Company Registration Number: 10398551. Black and Golds Estate Agents, Company Registration Number: 07939019. Registered Office: 117 Stratford Road, Solihull B90 3ND.  
© 2023 Black and Golds Letting Agents Limited, Company Registration Number: 10398551. Black and Golds Estate Agents Copyright. All rights reserved. No content can be reproduced without our prior written consent.  
While we as Estate Agents on behalf of the vendors endeavour to ensure the accuracy of property details provided and displayed, we have not tested any apparatus, equipment, fixtures and fittings or services and we cannot verify that they are connected, in working order or fit for the purpose. Neither have we had sight of the legal documents to verify the Freehold or Leasehold status of any property. A Buyer is advised to obtain verification from their Solicitor and/or Surveyor. A Buyer must check the availability of any property and make an appointment to view before embarking on any journey to see a property. The Vendors have checked and approved these particulars. These particulars are intended to give a fair description, but their accuracy cannot be guaranteed, and are not to be taken as forming any part of a resulting contract. They are issued on the basis the property is still available and on the understanding that all regulations are conducted through the agents.

## Key Features

- Three bedroom mid-terrace property
- Living room to front aspect
- Spacious dining kitchen overlooking the garden
- Two double bedrooms and one good size single
- Family bathroom
- Rear garden
- Excellent location near Shirley High Street and shops
- Close to transport links and local schools
- Ideal for first-time buyers or investors
- No upward chain

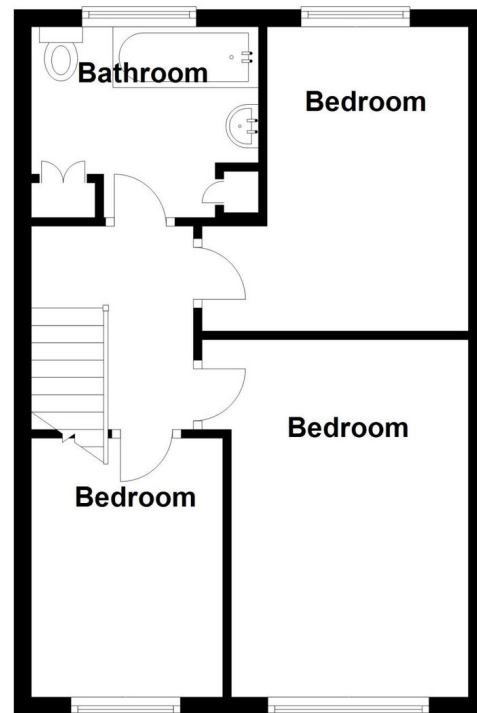
### Ground Floor

Approx. 37.6 sq. metres (404.4 sq. feet)



### First Floor

Approx. 39.0 sq. metres (420.0 sq. feet)



Total area: approx. 76.6 sq. metres (824.4 sq. feet)