



## Tower Bridge Road, SE1

### £600,000

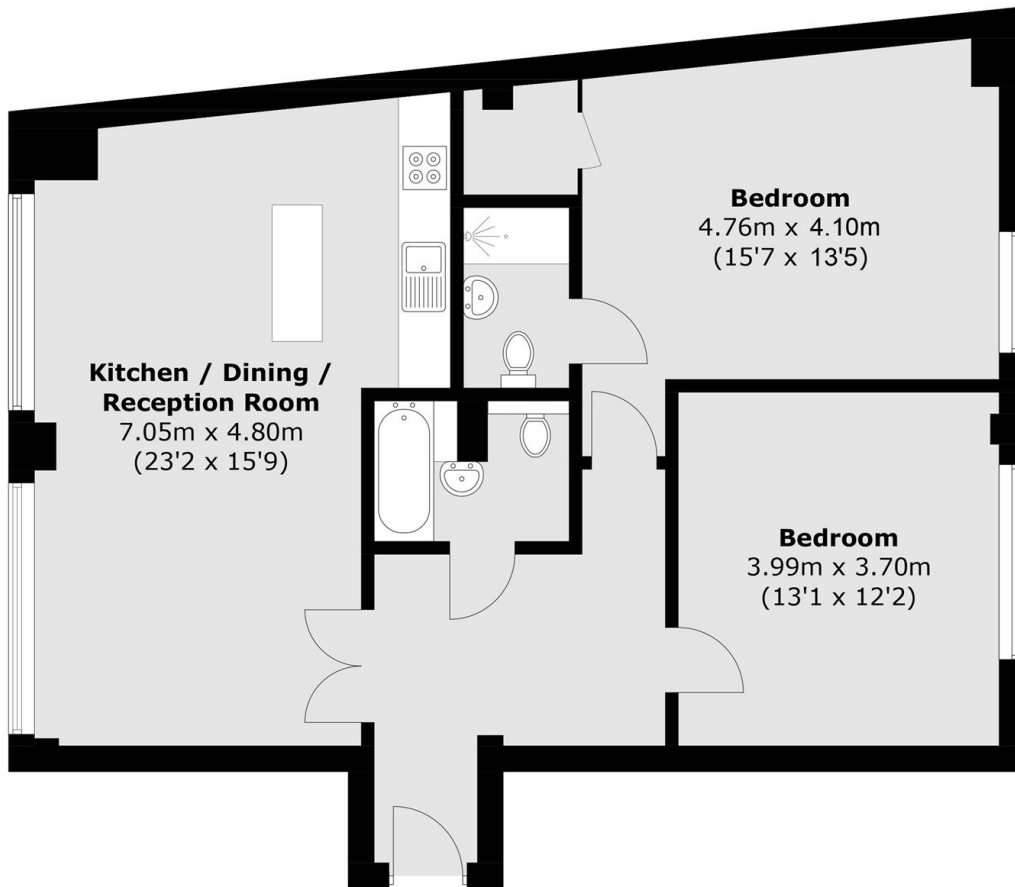
Situated in a stunning period building, this two double bedroom flat is immaculately presented throughout and has two modern bathrooms, a large open plan kitchen living space and ample storage.

The apartment is located moments from Bermondsey Street and Maltby Street as well as a wide range of shops, artisan delis and eateries. London Bridge station is located 0.7 miles away offering excellent transport links to all of London.

### Features

- Two Double Bedrooms
- Two Bathrooms
- Fantastic Condition
- Excellent Location
- Period Building
- Chain Free

# Tower Bridge Road, London, SE1



Total area (approx.): 86.6 sq. m (932.2 sq. ft)